

Urban lighting

**FORMAT<sub>1</sub>**



#### LUMINAIRE



- Die-cast aluminium body (EN 47100).
- Double layer polyester powder paint resistant to corrosion and salt spray fog.
- Silicone rubber gaskets.
- AISI 316 stainless steel external screws.
- Driver protected against voltage surges up to 4kV.
- Reflector made of engineering plastic metalized in high-vacuum or PMMA lenses.
- Screen made of 5mm thermal-shock resistant tempered glass.
- High quality LED sources characterized according to IES TM-30, with high color consistency <3SDCM and long useful life >60000 hours at L80.
- It complies with standards EN 60598-1 and EN 60598-2-3.

#### INSTALLATION

- Post-top installation (Ø60mm reduction).
- Supplied with power cable ended (0.15m) by IP66 socket-plug connector with locking ring for cables of diameter 9-12mm.

These fittings are suitable for the modern control systems.  
For the various possibilities, please see section "Controlling the light".

**Available wired with Zhaga Book 18 or NEMA ANSI C136.41 (5-pin) and waterproof cover.**

STANDARD PRODUCT		AVAILABLE OPTIONS	
Wiring	ON/OFF (A)	DALI (B), BIP (E)	
CCT	4000K (-840)	3000K (-830)	
Colour	 21	 16	



Urban lighting

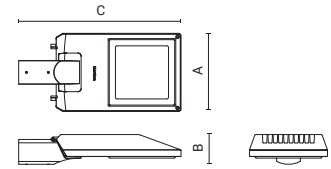
# FORMAT<sub>1</sub>



STANDARD COLOUR



DIMENSIONS



Code	Optic	Luminaire	CCT	CRI	Class	Wiring	Power Supply	A mm	B mm	C mm
0884008A-840-21	type II	35W, 3700lm	4000K	80	☐	ON/OFF	220-240V 50/60Hz	250	95	520
0884002A-840-21	type II	78W, 7450lm	4000K	80	☐	ON/OFF	220-240V 50/60Hz	250	95	520
0884009A-840-21	type III	35W, 3750lm	4000K	80	☐	ON/OFF	220-240V 50/60Hz	250	95	520
0884003A-840-21	type III	78W, 8200lm	4000K	80	☐	ON/OFF	220-240V 50/60Hz	250	95	520
0884010A-840-21	type IV	35W, 3400lm	4000K	80	☐	ON/OFF	220-240V 50/60Hz	250	95	520
0884004A-840-21	type IV	78W, 7400lm	4000K	80	☐	ON/OFF	220-240V 50/60Hz	250	95	520
0884011A-840-21	type IV-L	35W, 3350lm	4000K	80	☐	ON/OFF	220-240V 50/60Hz	250	95	520
0884005A-840-21	type IV-L	78W, 7300lm	4000K	80	☐	ON/OFF	220-240V 50/60Hz	250	95	520
0884006A-840-21	type VS-M	35W, 4000lm	4000K	80	☐	ON/OFF	220-240V 50/60Hz	250	95	520
0884000A-840-21	type VS-M	78W, 8700lm	4000K	80	☐	ON/OFF	220-240V 50/60Hz	250	95	520
0884007A-840-21	type VS-W	35W, 3350lm	4000K	80	☐	ON/OFF	220-240V 50/60Hz	250	95	520
0884001A-840-21	type VS-W	78W, 7300lm	4000K	80	☐	ON/OFF	220-240V 50/60Hz	250	95	520

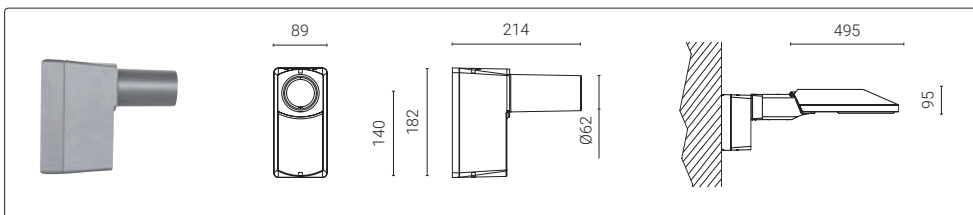
The **photo** represents the family product range. You can see the correct image of each product (code) on the website.

LED driver included.



Available on request:  
versions with Future-Proo.

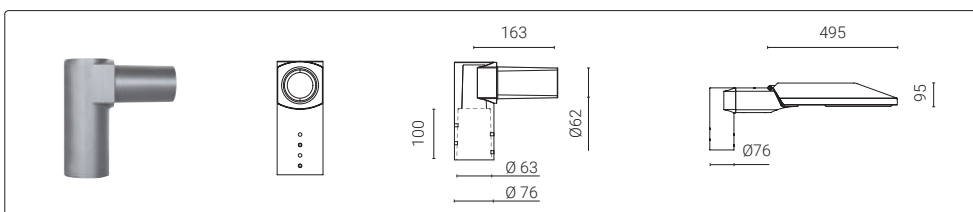
## ACCESSORIES



Code Kg

**1099069X-21** 1,20

Wall bracket.



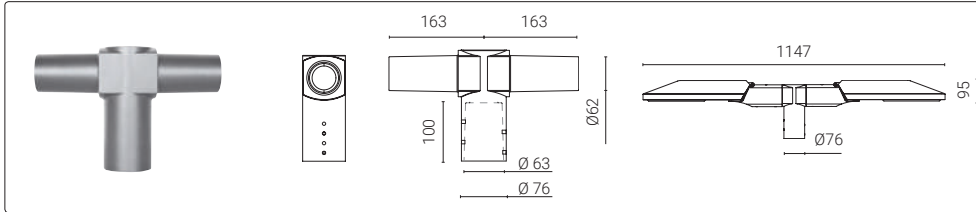
Code Kg

**1099090X-21** 1,60

Post-top mounting  
for single fixture for  
Ø 76 mm.

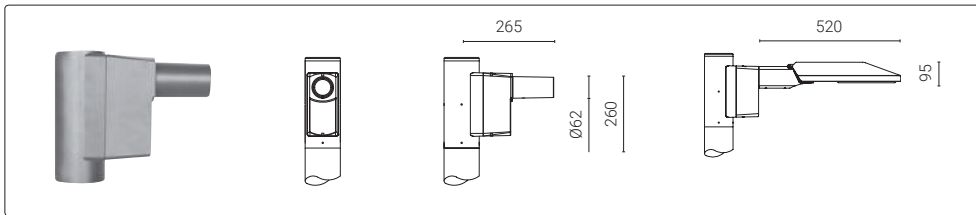
# FORMAT<sub>1</sub>

## ACCESSORIES



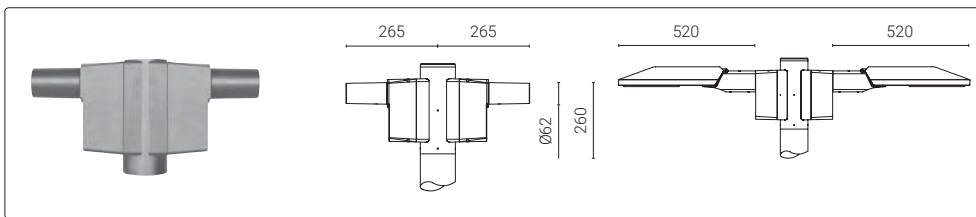
Code	Kg
<b>1099089X-21</b>	2,10

Post-top mounting for double fixture for Ø 76 mm.



Code	Kg
<b>1099088X-21</b>	2,20

Post-top mounting for double fixture for Ø 102 mm.



Code	Kg
<b>1099087X-21</b>	3,50

Post-top mounting for double fixture for Ø 102 mm.



For post top mounting, check all available solutions on page 354.

