

Urban lighting

LUNIOSTREET





LUMINAIRE

- Body in die-cast aluminum alloy with low copper content (EN 47100).
- QUALICOAT2 validated multi-stage painting process tested in salt spray according to ISO 9227 for aggressive environments of class C4. On request, resistance class C5.
- Gaskets in silicone rubber with controlled hardness, stabilized against UV rays.
- External screws in AISI 316 stainless steel chemically passivated to contrast galvanic corrosion. Color of the screws combined with the color of the fixture for better aesthetic coordination.
- Wiring on removable galvanized steel tray.
- Knife-switch for automatic power disconnection when opened.
- Integrated LED drivers equipped with protection against overtemperatures and mains spikes or surges both in common and differential mode. Future-proof versions equipped with D4I certified LED drivers for using intelligent modules on Zhaga Book 18 or NEMA ANSI C136.41 sockets.
- Lenses made of optical grade PMMA with free-form technology. Special surface finish to minimize chromatic aberrations and ensure optimal color mixing in dynamic white or colored light applications.
- Screen made of 4mm thermal-shock resistant tempered glass.
- High quality LED sources mounted on metal-based modules for better thermal load management and characterized according to LM-80 methodology for longevity and IES TM-30 for colorimetric characteristics. High color consistency <3SDCM, for guaranteed long life, in compliance with installation requirements, for more than 60,000 hours with parameters L80B20.
- Appliance built in compliance with EN 60598-1 and EN 60598-2-3 standards, complete with CE marking in compliance with EU directives.

INSTALLATION

- Post top installation, requires Ø60mm tenon for 100mm height. Available accessories for single or multiple fixing on the arm.
- Supplied complete with cable (0.15m or, on request, pole length) with IP66 socket-plug connector with locking ring nut for cables from 9 to 12mm.

Available versions with Casambi and other modern control systems, for more information see "Controlling the Light" section.

Available wired with Zhaga Book 18 or NEMA ANSI C136.41 (5-pin) and waterproof cover.

STANDARD PRODUCT		AVAILABLE OPTIONS	
Wiring	ON/OFF (A)	DALI (B), BIP (E)	
CCT	4000K (-840 = CRI 80 / CCT 4000)	3000K (-830 = CRI 80 / CCT 3000)	
Colour	● 21 Aluminium (similar to RAL 9006)	● 12 Black (similar to RAL 9005)	● 16 Grey (similar to RAL 7024)



📍 Outlet Park - Vilnius, Lithuania

Urban lighting

LUNIO STREET

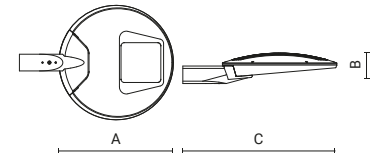
LUNIO-STREET


















STANDARD COLOUR


 21


DIMENSIONS



Code	Optic	Luminaire		CRI	CCT	Class	Wiring	Power Supply	A mm	B mm	C mm
		Watt	Lumen								
0877023A-840-21	 type II	21W	2900lm	80	4000K	□	ON/OFF	220-240V 50/60Hz	520	140	700
0877024A-840-21	 type II	40W	5650lm	80	4000K	□	ON/OFF	220-240V 50/60Hz	520	140	700
0877025A-840-21	 type II	77W	10500lm	80	4000K	□	ON/OFF	220-240V 50/60Hz	520	140	700
0877026A-840-21	 type III	21W	2900lm	80	4000K	□	ON/OFF	220-240V 50/60Hz	520	140	700
0877027A-840-21	 type III	40W	5650lm	80	4000K	□	ON/OFF	220-240V 50/60Hz	520	140	700
0877028A-840-21	 type III	77W	10700lm	80	4000K	□	ON/OFF	220-240V 50/60Hz	520	140	700
0877029A-840-21	 type IV	21W	2950lm	80	4000K	□	ON/OFF	220-240V 50/60Hz	520	140	700
0877030A-840-21	 type IV	40W	5800lm	80	4000K	□	ON/OFF	220-240V 50/60Hz	520	140	700
0877031A-840-21	 type IV	77W	10850lm	80	4000K	□	ON/OFF	220-240V 50/60Hz	520	140	700
0877032A-840-21	 type IV-L	21W	2850lm	80	4000K	□	ON/OFF	220-240V 50/60Hz	520	140	700
0877033A-840-21	 type IV-L	40W	5550lm	80	4000K	□	ON/OFF	220-240V 50/60Hz	520	140	700
0877034A-840-21	 type IV-L	77W	10500lm	80	4000K	□	ON/OFF	220-240V 50/60Hz	520	140	700
0877020A-840-21	 type VS	21W	2850lm	80	4000K	□	ON/OFF	220-240V 50/60Hz	520	140	700
0877021A-840-21	 type VS	40W	5600lm	80	4000K	□	ON/OFF	220-240V 50/60Hz	520	140	700
0877022A-840-21	 type VS	77W	10500lm	80	4000K	□	ON/OFF	220-240V 50/60Hz	520	140	700

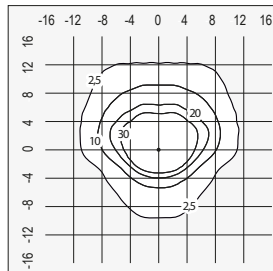
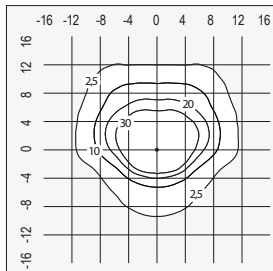
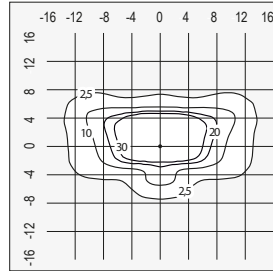
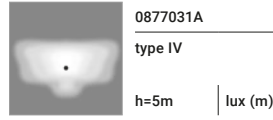
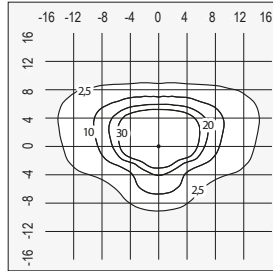
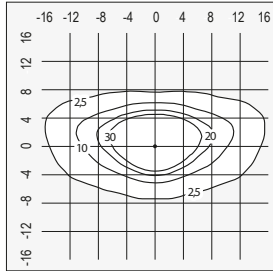
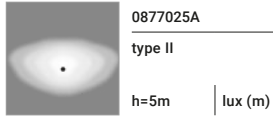
 The **photo** represents the family product range. You can see the correct image of each product (code) on the website.

LED driver included.


Available on request:
 versions with Future-Proof

LUNIO STREET

LIGHTING DATA

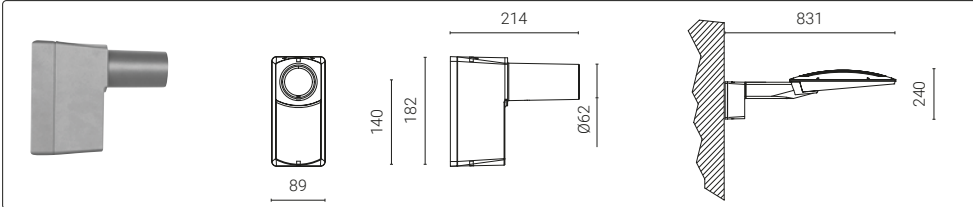


📍 Outlet Park - Vilnius, Lithuania

Urban lighting

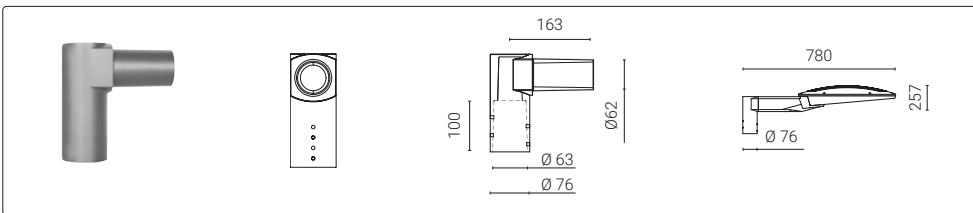
LUNIO STREET

ACCESSORIES



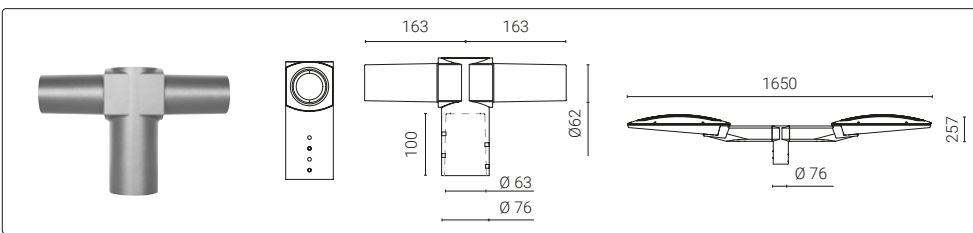
Code	Kg
1099069X-21	1,20

Wall bracket.



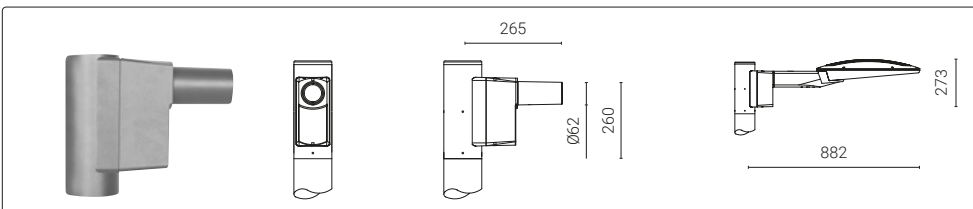
Code	Kg
1099090X-21	1,60

Post-top mounting for single fixture for Ø 76 mm.



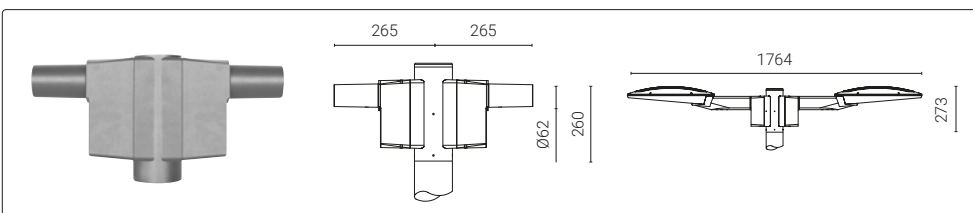
Code	Kg
1099089X-21	2,10

Post-top mounting for double fixture for Ø 76 mm.



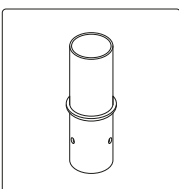
Code	Kg
1099088X-21	2,20

Post-top mounting for double fixture for Ø 102 mm.



Code	Kg
1099087X-21	3,50

Post-top mounting for double fixture for Ø 102 mm.



Code	Kg
1097049X-21	2,5 kg

Adapter for pole reduction from Ø76 to Ø60

1097069X-21 - 2,5 Kg - from Ø89 to Ø60
1097070X-21 - 2,5 kg - from Ø102 to Ø60
1097071X-21 - 2,5 kg - from Ø114 to Ø60



📍 Outlet Park - Vilnius, Lithuania

