

Urban lighting

# LUNIO STREET



### LUMINAIRE




- Die-cast aluminium body (EN 47100).
- Double layer polyester powder paint resistant to corrosion and salt spray fog.
- Silicone rubber gaskets.
- AISI 316 stainless steel external screws.
- Wiring on removable galvanized steel tray.
- Knife-switch for automatic power disconnection when opened.
- Driver protected against voltage surges up to 4kV.
- PMMA lenses for LEDs.
- Screen made of 4mm thermal-shock resistant tempered glass.
- High quality LED sources characterized according to IES TM-30, with high color consistency <3SDCM and long useful life >60000 hours at L80.
- It complies with standards EN 60598-1 and EN 60598-2-3.

### INSTALLATION


- Post-top installation (Ø60mm reduction).
- Supplied with power cable ended (0.15m) by IP66 socket-plug connector with locking ring for cables of diameter 9-12mm.

Available versions with Casambi and other modern control systems, for more information see "Light controls" section.

**Available wired with Zhaga Book 18 or NEMA ANSI C136.41 (5-pin) and waterproof cover.**

STANDARD PRODUCT		AVAILABLE OPTIONS	
Wiring	ON/OFF (A)	BIP (E), DALI (B)	
CCT	4000K (-840)	3000K (-830)	
Colour	 21	 12,  16	



 Outlet Park - Vilnius, Lithuania

Urban lighting

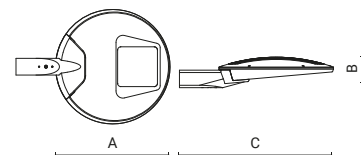
# LUNIO STREET



STANDARD COLOUR

 21

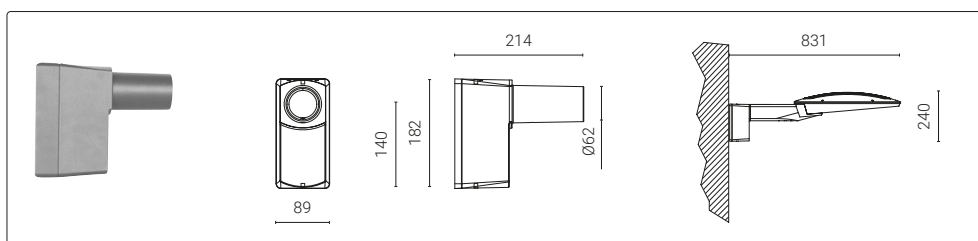

DIMENSIONS



Code	Optic	Luminaire		CRI	CCT	Class	Wiring	Power Supply	A	B	C
		Watt	Lumen						mm	mm	mm
0877013A-840-21	 type II	35W	3600lm	80	4000K	□	ON/OFF	220-240V 50/60Hz	520	140	700
0877017A-840-21	 type II	69W	7400lm	80	4000K	□	ON/OFF	220-240V 50/60Hz	520	140	700
0877001A-840-21	 type III	35W	3900lm	80	4000K	□	ON/OFF	220-240V 50/60Hz	520	140	700
0877005A-840-21	 type III	69W	8000lm	80	4000K	□	ON/OFF	220-240V 50/60Hz	520	140	700
0877003A-840-21	 type IV	35W	3600lm	80	4000K	□	ON/OFF	220-240V/50-60Hz	520	140	700
0877004A-840-21	 type IV	69W	7200lm	80	4000K	□	ON/OFF	220-240V/50-60Hz	520	140	700
0877007A-840-21	 type VS-W	35W	3300lm	80	4000K	□	ON/OFF	220-240V 50/60Hz	520	140	700
0877011A-840-21	 type VS-W	69W	6750lm	80	4000K	□	ON/OFF	220-240V 50/60Hz	520	140	700

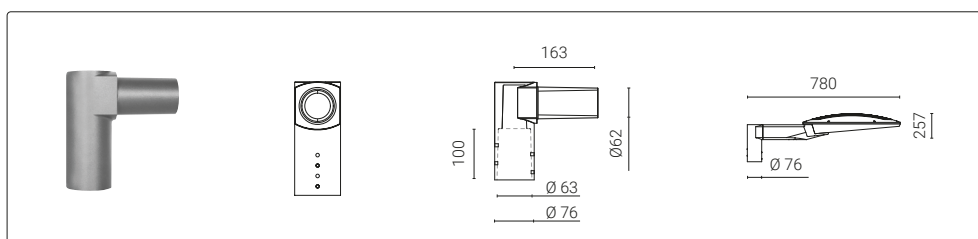
 The **photo** represents the family product range. You can see the correct image of each product (code) on the website.

## ACCESSORIES



Code	Kg
<b>1099069X-21</b>	1,20


Wall bracket.



Code	Kg
<b>1099090X-21</b>	1,60

Post-top mounting for single fixture for Ø 76 mm.

LED driver included.


**Available on request:**  
 versions with Future-Proof



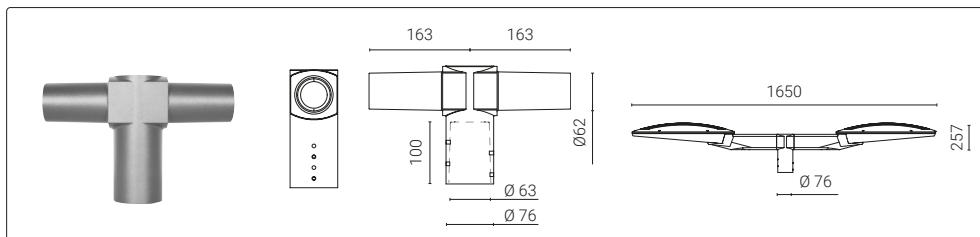


📍 Outlet Park - Vilnius, Lithuania

Urban lighting

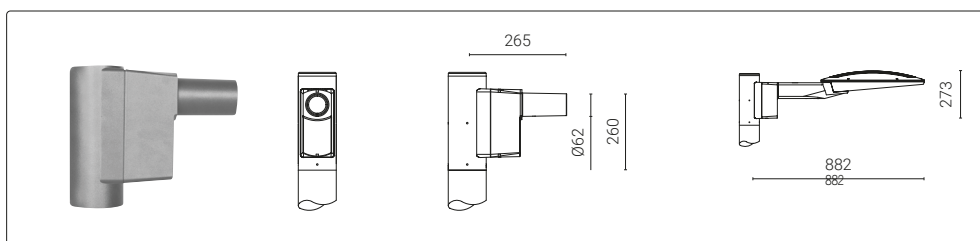
# LUNIO STREET

## ACCESSORIES



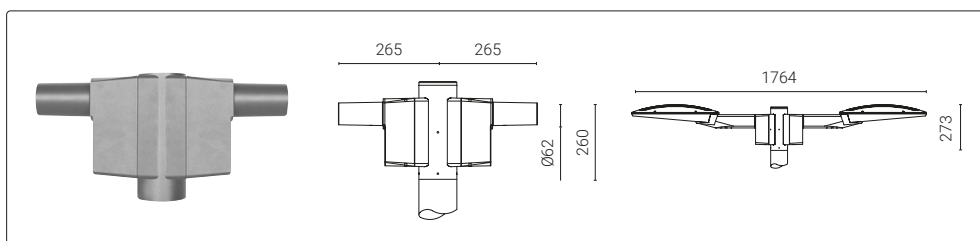
Code	Kg
<b>1099089X-21</b>	2,10

Post-top mounting for double fixture for Ø 76 mm.




Code	Kg
<b>1099088X-21</b>	2,20

Post-top mounting for double fixture for Ø 102 mm.



Code	Kg
<b>1099087X-21</b>	3,50

Post-top mounting for double fixture for Ø 102 mm.

 For post top mounting, check all available solutions on page 402.



📍 Outlet Park - Vilnius, Lithuania

