

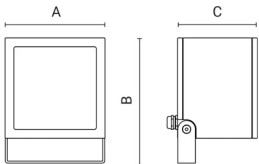
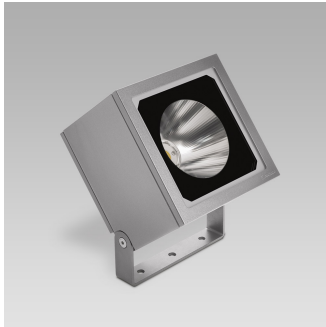
PIXOL200

performance



Arcluce Code **0656000A-830-21**

Ex Code



Technical information

Light source:	LED, 3000K, CRI>80
Luminaire efficacy:	116lm/W
Luminaire:	38W , 4400lm
LED life time:	> 60000h - L80 - B20 (Ta 25°C)
High colour consistency:	< 3 SDCM
Power supply:	220-240V 50/60Hz
Wiring:	ON/OFF
Optics:	spot 10°
Color:	Aluminium - 21
Weight:	5.4 kg
Size:	A: 200mm B: 250mm C: 160mm

CE

IP66

IK08



0,03m²

Appliance

- Die-cast aluminium body and trim (EN 47100).
- Double layer polyester powder paint resistant to corrosion and salt spray fog.
- Silicone rubber gaskets.
- AISI 316 stainless steel external screws.
- Reflector made of engineering plastic metalized in high-vacuum.
- Screen made of 5mm thermal-shock resistant tempered glass.
- High quality LED sources characterized according to IES TM-30, with high color consistency <3SDCM and long useful life >60000 hours at L80.

Installation

- Galvanized and painted steel bracket.
- M16 stainless steel cable gland.

Note

- Available versions with Casambi and other modern control systems, for more information see "Light controls" section.

Norm

- It complies with standards EN 60598-1 and EN 60598-2-5.

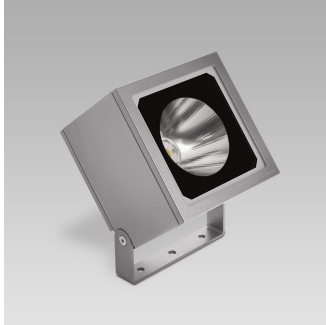
PIXOL200

performance



Arcluce Code **0656000A-830-21**

Ex Code



Specifications

Floodlight for outdoor lighting, able to integrate into any architectural context thanks to its clean design and functional and comfortable lighting.

Die-cast aluminium body and trim (EN 47100). Double layer polyester powder paint resistant to corrosion and salt spray fog. Silicone rubber gaskets. AISI 316 stainless steel external screws. Reflector made of engineering plastic metalized in high-vacuum. Screen made of 5mm thermal-shock resistant tempered glass. High quality LED sources characterized according to IES TM-30, with high color consistency <3SDCM and long useful life >60000 hours at L80.

It complies with standards EN 60598-1 and EN 60598-2-5.

LED sources available in color temperatures 3000K

High color consistency < 3 SDCM and LED life time > 60000h - L80 - B20 (Ta 25°C).

System effectiveness, minimum 116lm/W

Luminaire in insulation class I.

DRIVER INCLUDED.

Galvanized and painted steel bracket. M16 stainless steel cable gland.

Available versions with Casambi and other modern control systems, for more information see "Light controls" section.

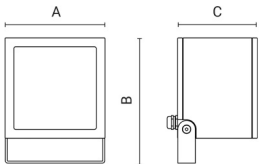
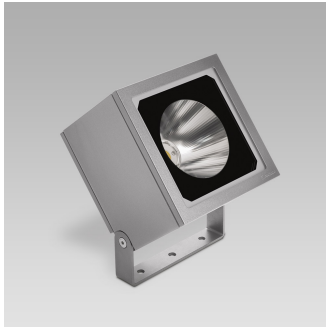
Brand ARCLUCE mod. PIXOL200

PIXOL200

performance



Arcluce Code **0656001A-830-21**
Ex Code



Technical information

Light source:	LED, 3000K, CRI>80
Luminaire efficacy:	103lm/W
Luminaire:	38W , 3900lm
LED life time:	> 60000h - L80 - B20 (Ta 25°C)
High colour consistency:	< 3 SDCM
Power supply:	220-240V 50/60Hz
Wiring:	ON/OFF
Optics:	flood 37°
Color:	Aluminium - 21
Weight:	5.4 kg
Size:	A: 200mm B: 250mm C: 160mm

CE

IP66

IK08



0,03m²

Appliance

- Die-cast aluminium body and trim (EN 47100).
- Double layer polyester powder paint resistant to corrosion and salt spray fog.
- Silicone rubber gaskets.
- AISI 316 stainless steel external screws.
- Reflector made of engineering plastic metalized in high-vacuum.
- Screen made of 5mm thermal-shock resistant tempered glass.
- High quality LED sources characterized according to IES TM-30, with high color consistency <3SDCM and long useful life >60000 hours at L80.

Installation

- Galvanized and painted steel bracket.
- M16 stainless steel cable gland.

Note

- Available versions with Casambi and other modern control systems, for more information see "Light controls" section.

Norm

- It complies with standards EN 60598-1 and EN 60598-2-5.

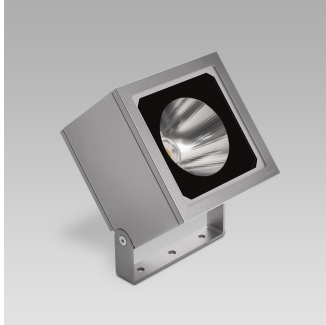
PIXOL200

performance



Arcluce Code **0656001A-830-21**

Ex Code



Specifications

Floodlight for outdoor lighting, able to integrate into any architectural context thanks to its clean design and functional and comfortable lighting.

Die-cast aluminium body and trim (EN 47100). Double layer polyester powder paint resistant to corrosion and salt spray fog. Silicone rubber gaskets. AISI 316 stainless steel external screws. Reflector made of engineering plastic metalized in high-vacuum. Screen made of 5mm thermal-shock resistant tempered glass. High quality LED sources characterized according to IES TM-30, with high color consistency <3SDCM and long useful life >60000 hours at L80.

It complies with standards EN 60598-1 and EN 60598-2-5.

LED sources available in color temperatures 3000K

High color consistency < 3 SDCM and LED life time > 60000h - L80 - B20 (Ta 25°C).

System effectiveness, minimum 103lm/W

Luminaire in insulation class I.

DRIVER INCLUDED.

Galvanized and painted steel bracket. M16 stainless steel cable gland.

Available versions with Casambi and other modern control systems, for more information see "Light controls" section.

Brand ARCLUCE mod. PIXOL200

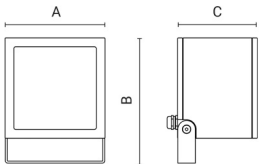
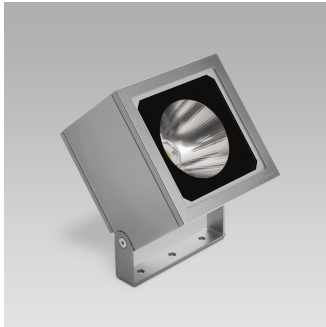
PIXOL200

performance



Arcluce Code **0656003A-830-21**

Ex Code



Technical information

Light source:	LED, 3000K, CRI>80
Luminaire efficacy:	113lm/W
Luminaire:	38W , 4300lm
LED life time:	> 60000h - L80 - B20 (Ta 25°C)
High colour consistency:	< 3 SDCM
Power supply:	220-240V 50/60Hz
Wiring:	ON/OFF
Optics:	very wide flood 70°
Color:	Aluminium - 21
Weight:	5.4 kg
Size:	A: 200mm B: 250mm C: 160mm

CE

IP66

IK08



0,03m²

Appliance

- Die-cast aluminium body and trim (EN 47100).
- Double layer polyester powder paint resistant to corrosion and salt spray fog.
- Silicone rubber gaskets.
- AISI 316 stainless steel external screws.
- Reflector made of engineering plastic metalized in high-vacuum.
- Screen made of 5mm thermal-shock resistant tempered glass.
- High quality LED sources characterized according to IES TM-30, with high color consistency <3SDCM and long useful life >60000 hours at L80.

Installation

- Galvanized and painted steel bracket.
- M16 stainless steel cable gland.

Note

- Available versions with Casambi and other modern control systems, for more information see "Light controls" section.

Norm

- It complies with standards EN 60598-1 and EN 60598-2-5.

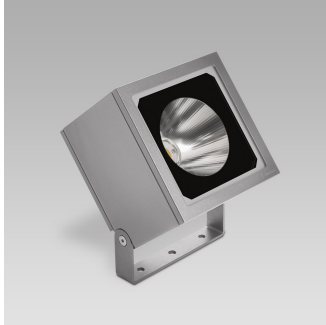
PIXOL200

performance



Arcluce Code **0656003A-830-21**

Ex Code



Specifications

Floodlight for outdoor lighting, able to integrate into any architectural context thanks to its clean design and functional and comfortable lighting.

Die-cast aluminium body and trim (EN 47100). Double layer polyester powder paint resistant to corrosion and salt spray fog. Silicone rubber gaskets. AISI 316 stainless steel external screws. Reflector made of engineering plastic metalized in high-vacuum. Screen made of 5mm thermal-shock resistant tempered glass. High quality LED sources characterized according to IES TM-30, with high color consistency <3SDCM and long useful life >60000 hours at L80.

It complies with standards EN 60598-1 and EN 60598-2-5.

LED sources available in color temperatures 3000K

High color consistency < 3 SDCM and LED life time > 60000h - L80 - B20 (Ta 25°C).

System effectiveness, minimum 113lm/W

Luminaire in insulation class I.

DRIVER INCLUDED.

Galvanized and painted steel bracket. M16 stainless steel cable gland.

Available versions with Casambi and other modern control systems, for more information see "Light controls" section.

Brand ARCLUCE mod. PIXOL200

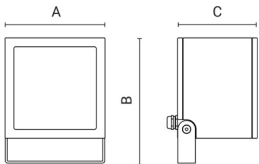
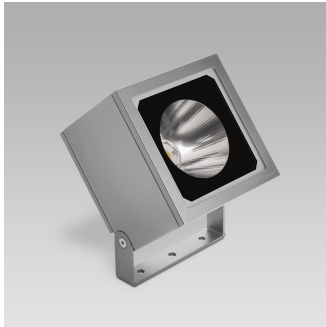
PIXOL200

performance



Arcluce Code **0656010A-830-21**

Ex Code



Technical information

Light source:	LED, 3000K, CRI>80
Luminaire efficacy:	116lm/W
Luminaire:	69W , 8000lm
LED life time:	> 60000h - L80 - B20 (Ta 25°C)
High colour consistency:	< 3 SDCM
Power supply:	220-240V 50/60Hz
Wiring:	ON/OFF
Optics:	narrow 15°
Color:	Aluminium - 21
Weight:	5.4 kg
Size:	A: 200mm B: 250mm C: 160mm

CE

IP66

IK08



0,03m²

Appliance

- Die-cast aluminium body and trim (EN 47100).
- Double layer polyester powder paint resistant to corrosion and salt spray fog.
- Silicone rubber gaskets.
- AISI 316 stainless steel external screws.
- Reflector made of engineering plastic metalized in high-vacuum.
- Screen made of 5mm thermal-shock resistant tempered glass.
- High quality LED sources characterized according to IES TM-30, with high color consistency <3SDCM and long useful life >60000 hours at L80.

Installation

- Galvanized and painted steel bracket.
- M16 stainless steel cable gland.

Note

- Available versions with Casambi and other modern control systems, for more information see "Light controls" section.

Norm

- It complies with standards EN 60598-1 and EN 60598-2-5.

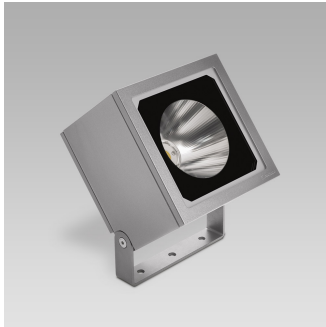
PIXOL200

performance



Arcluce Code **0656010A-830-21**

Ex Code



Specifications

Floodlight for outdoor lighting, able to integrate into any architectural context thanks to its clean design and functional and comfortable lighting.

Die-cast aluminium body and trim (EN 47100). Double layer polyester powder paint resistant to corrosion and salt spray fog. Silicone rubber gaskets. AISI 316 stainless steel external screws. Reflector made of engineering plastic metalized in high-vacuum. Screen made of 5mm thermal-shock resistant tempered glass. High quality LED sources characterized according to IES TM-30, with high color consistency <3SDCM and long useful life >60000 hours at L80.

It complies with standards EN 60598-1 and EN 60598-2-5.

LED sources available in color temperatures 3000K

High color consistency < 3 SDCM and LED life time > 60000h - L80 - B20 (Ta 25°C).

System effectiveness, minimum 116lm/W

Luminaire in insulation class I.

DRIVER INCLUDED.

Galvanized and painted steel bracket. M16 stainless steel cable gland.

Available versions with Casambi and other modern control systems, for more information see "Light controls" section.

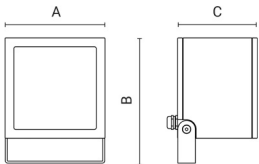
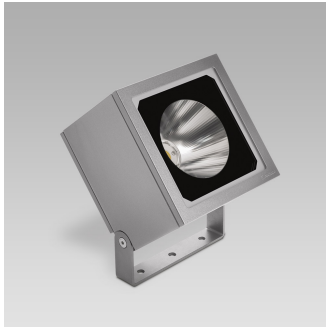
Brand ARCLUCE mod. PIXOL200

PIXOL200

performance



Arcluce Code **0656011A-830-21**
Ex Code



Technical information

Light source:	LED, 3000K, CRI>80
Luminaire efficacy:	104lm/W
Luminaire:	69W , 7150lm
LED life time:	> 60000h - L80 - B20 (Ta 25°C)
High colour consistency:	< 3 SDCM
Power supply:	220-240V 50/60Hz
Wiring:	ON/OFF
Optics:	flood 40°
Color:	Aluminium - 21
Weight:	5.4 kg
Size:	A: 200mm B: 250mm C: 160mm

CE

IP66

IK08



0,03m²

Appliance

- Die-cast aluminium body and trim (EN 47100).
- Double layer polyester powder paint resistant to corrosion and salt spray fog.
- Silicone rubber gaskets.
- AISI 316 stainless steel external screws.
- Reflector made of engineering plastic metalized in high-vacuum.
- Screen made of 5mm thermal-shock resistant tempered glass.
- High quality LED sources characterized according to IES TM-30, with high color consistency <3SDCM and long useful life >60000 hours at L80.

Installation

- Galvanized and painted steel bracket.
- M16 stainless steel cable gland.

Note

- Available versions with Casambi and other modern control systems, for more information see "Light controls" section.

Norm

- It complies with standards EN 60598-1 and EN 60598-2-5.

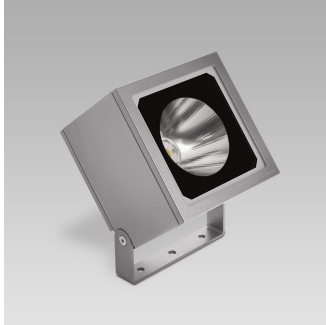
PIXOL200

performance



Arcluce Code **0656011A-830-21**

Ex Code



Specifications

Floodlight for outdoor lighting, able to integrate into any architectural context thanks to its clean design and functional and comfortable lighting.

Die-cast aluminium body and trim (EN 47100). Double layer polyester powder paint resistant to corrosion and salt spray fog. Silicone rubber gaskets. AISI 316 stainless steel external screws. Reflector made of engineering plastic metalized in high-vacuum. Screen made of 5mm thermal-shock resistant tempered glass. High quality LED sources characterized according to IES TM-30, with high color consistency <3SDCM and long useful life >60000 hours at L80.

It complies with standards EN 60598-1 and EN 60598-2-5.

LED sources available in color temperatures 3000K

High color consistency < 3 SDCM and LED life time > 60000h - L80 - B20 (Ta 25°C).

System effectiveness, minimum 104lm/W

Luminaire in insulation class I.

DRIVER INCLUDED.

Galvanized and painted steel bracket. M16 stainless steel cable gland.

Available versions with Casambi and other modern control systems, for more information see "Light controls" section.

Brand ARCLUCE mod. PIXOL200

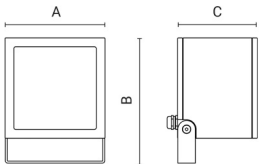
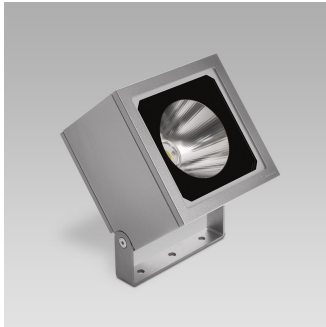
PIXOL200

performance



Arcluce Code **0656013A-830-21**

Ex Code



Technical information

Light source:	LED, 3000K, CRI>80
Luminaire efficacy:	116lm/W
Luminaire:	69W , 8000lm
LED life time:	> 60000h - L80 - B20 (Ta 25°C)
High colour consistency:	< 3 SDCM
Power supply:	220-240V 50/60Hz
Wiring:	ON/OFF
Optics:	very wide flood 70°
Color:	Aluminium - 21
Weight:	5.4 kg
Size:	A: 200mm B: 250mm C: 160mm

CE

IP66

IK08



0,03m²

Appliance

- Die-cast aluminium body and trim (EN 47100).
- Double layer polyester powder paint resistant to corrosion and salt spray fog.
- Silicone rubber gaskets.
- AISI 316 stainless steel external screws.
- Reflector made of engineering plastic metalized in high-vacuum.
- Screen made of 5mm thermal-shock resistant tempered glass.
- High quality LED sources characterized according to IES TM-30, with high color consistency <3SDCM and long useful life >60000 hours at L80.

Installation

- Galvanized and painted steel bracket.
- M16 stainless steel cable gland.

Note

- Available versions with Casambi and other modern control systems, for more information see "Light controls" section.

Norm

- It complies with standards EN 60598-1 and EN 60598-2-5.

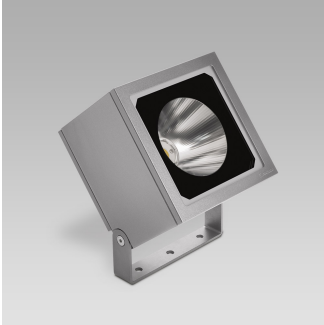
PIXOL200

performance



Arcluce Code **0656013A-830-21**

Ex Code



Specifications

Floodlight for outdoor lighting, able to integrate into any architectural context thanks to its clean design and functional and comfortable lighting.

Die-cast aluminium body and trim (EN 47100). Double layer polyester powder paint resistant to corrosion and salt spray fog. Silicone rubber gaskets. AISI 316 stainless steel external screws. Reflector made of engineering plastic metalized in high-vacuum. Screen made of 5mm thermal-shock resistant tempered glass. High quality LED sources characterized according to IES TM-30, with high color consistency <3SDCM and long useful life >60000 hours at L80.

It complies with standards EN 60598-1 and EN 60598-2-5.

LED sources available in color temperatures 3000K

High color consistency < 3 SDCM and LED life time > 60000h - L80 - B20 (Ta 25°C).

System effectiveness, minimum 116lm/W

Luminaire in insulation class I.

DRIVER INCLUDED.

Galvanized and painted steel bracket. M16 stainless steel cable gland.

Available versions with Casambi and other modern control systems, for more information see "Light controls" section.

Brand ARCLUCE mod. PIXOL200

PIXOL200

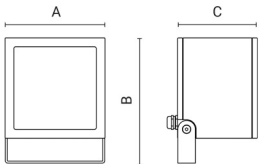
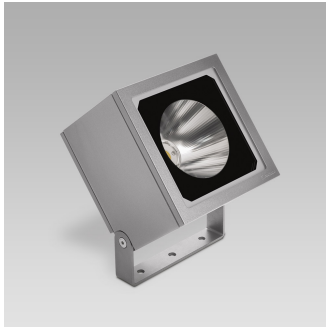
performance



Arcluce Code

0656020F-21

Ex Code



Technical information

Light source:	LED, 31W, RGBW
Luminaire:	40W
LED life time:	> 60000h - L80 - B20 (Ta 25°C)
Power supply:	220-240V 50/60Hz
Wiring:	DMX
Optics:	spot 8°
Color:	Aluminium - 21
Weight:	5.4 kg
Size:	A: 200mm B: 250mm C: 160mm

CE

IP66

IK08



0,03m²

Appliance

- Die-cast aluminium body and trim (EN 47100).
- Double layer polyester powder paint resistant to corrosion and salt spray fog.
- Silicone rubber gaskets.
- AISI 316 stainless steel external screws.
- Reflector made of engineering plastic metalized in high-vacuum.
- Screen made of 5mm thermal-shock resistant tempered glass.
- High quality LED sources characterized according to IES TM-30, with high color consistency <3SDCM and long useful life >60000 hours at L80.

Installation

- Galvanized and painted steel bracket.
- M16 stainless steel cable gland.

Note

- Available versions with Casambi and other modern control systems, for more information see "Light controls" section.

Norm

- It complies with standards EN 60598-1 and EN 60598-2-5.

PIXOL200

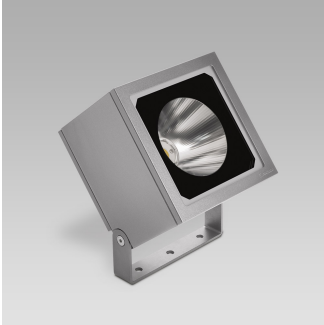
performance



Arcluce Code

0656020F-21

Ex Code



Specifications

Floodlight for outdoor lighting, able to integrate into any architectural context thanks to its clean design and functional and comfortable lighting.

Die-cast aluminium body and trim (EN 47100). Double layer polyester powder paint resistant to corrosion and salt spray fog. Silicone rubber gaskets. AISI 316 stainless steel external screws. Reflector made of engineering plastic metalized in high-vacuum. Screen made of 5mm thermal-shock resistant tempered glass. High quality LED sources characterized according to IES TM-30, with high color consistency <3SDCM and long useful life >60000 hours at L80.

It complies with standards EN 60598-1 and EN 60598-2-5.

LED source in RGBW version.

System effectiveness, minimum

Luminaire in insulation class I.

DRIVER INCLUDED.

Galvanized and painted steel bracket. M16 stainless steel cable gland.

Available versions with Casambi and other modern control systems, for more information see "Light controls" section.

Brand ARCLUCE mod. PIXOL200

PIXOL200

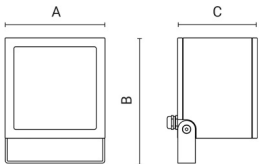
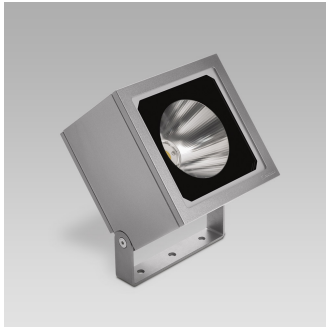
performance



Arcluce Code

0656021F-21

Ex Code



Technical information

Light source:	LED, 31W, RGBW
Luminaire:	40W
LED life time:	> 60000h - L80 - B20 (Ta 25°C)
Power supply:	220-240V 50/60Hz
Wiring:	DMX
Optics:	medium 25°
Color:	Aluminium - 21
Weight:	5.4 kg
Size:	A: 200mm B: 250mm C: 160mm

CE

IP66

IK08



0,03m²

Appliance

- Die-cast aluminium body and trim (EN 47100).
- Double layer polyester powder paint resistant to corrosion and salt spray fog.
- Silicone rubber gaskets.
- AISI 316 stainless steel external screws.
- Reflector made of engineering plastic metalized in high-vacuum.
- Screen made of 5mm thermal-shock resistant tempered glass.
- High quality LED sources characterized according to IES TM-30, with high color consistency <3SDCM and long useful life >60000 hours at L80.

Installation

- Galvanized and painted steel bracket.
- M16 stainless steel cable gland.

Note

- Available versions with Casambi and other modern control systems, for more information see "Light controls" section.

Norm

- It complies with standards EN 60598-1 and EN 60598-2-5.

PIXOL200

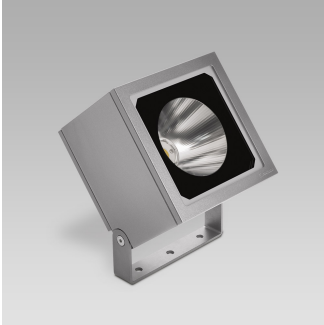
performance



Arcluce Code

0656021F-21

Ex Code



Specifications

Floodlight for outdoor lighting, able to integrate into any architectural context thanks to its clean design and functional and comfortable lighting.

Die-cast aluminium body and trim (EN 47100). Double layer polyester powder paint resistant to corrosion and salt spray fog. Silicone rubber gaskets. AISI 316 stainless steel external screws. Reflector made of engineering plastic metalized in high-vacuum. Screen made of 5mm thermal-shock resistant tempered glass. High quality LED sources characterized according to IES TM-30, with high color consistency <3SDCM and long useful life >60000 hours at L80.

It complies with standards EN 60598-1 and EN 60598-2-5.

LED source in RGBW version.

System effectiveness, minimum

Luminaire in insulation class I.

DRIVER INCLUDED.

Galvanized and painted steel bracket. M16 stainless steel cable gland.

Available versions with Casambi and other modern control systems, for more information see "Light controls" section.

Brand ARCLUCE mod. PIXOL200

PIXOL200

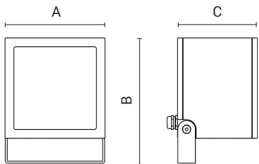
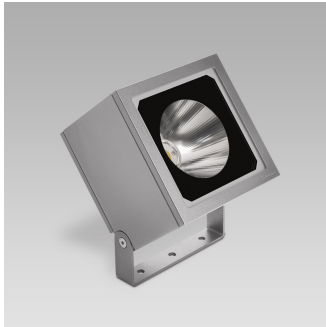
performance



Arcluce Code

0656022F-21

Ex Code



Technical information

Light source:	LED, 31W, RGBW
Luminaire:	40W
LED life time:	> 60000h - L80 - B20 (Ta 25°C)
Power supply:	220-240V 50/60Hz
Wiring:	DMX
Optics:	wide flood 46°
Color:	Aluminium - 21
Weight:	5.4 kg
Size:	A: 200mm B: 250mm C: 160mm

CE

IP66

IK08



0,03m²

Appliance

- Die-cast aluminium body and trim (EN 47100).
- Double layer polyester powder paint resistant to corrosion and salt spray fog.
- Silicone rubber gaskets.
- AISI 316 stainless steel external screws.
- Reflector made of engineering plastic metalized in high-vacuum.
- Screen made of 5mm thermal-shock resistant tempered glass.
- High quality LED sources characterized according to IES TM-30, with high color consistency <3SDCM and long useful life >60000 hours at L80.

Installation

- Galvanized and painted steel bracket.
- M16 stainless steel cable gland.

Note

- Available versions with Casambi and other modern control systems, for more information see "Light controls" section.

Norm

- It complies with standards EN 60598-1 and EN 60598-2-5.

PIXOL200

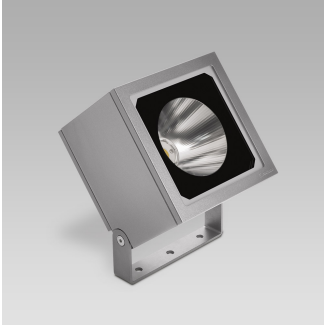
performance



Arcluce Code

0656022F-21

Ex Code



Specifications

Floodlight for outdoor lighting, able to integrate into any architectural context thanks to its clean design and functional and comfortable lighting.

Die-cast aluminium body and trim (EN 47100). Double layer polyester powder paint resistant to corrosion and salt spray fog. Silicone rubber gaskets. AISI 316 stainless steel external screws. Reflector made of engineering plastic metalized in high-vacuum. Screen made of 5mm thermal-shock resistant tempered glass. High quality LED sources characterized according to IES TM-30, with high color consistency <3SDCM and long useful life >60000 hours at L80.

It complies with standards EN 60598-1 and EN 60598-2-5.

LED source in RGBW version.

System effectiveness, minimum

Luminaire in insulation class I.

DRIVER INCLUDED.

Galvanized and painted steel bracket. M16 stainless steel cable gland.

Available versions with Casambi and other modern control systems, for more information see "Light controls" section.

Brand ARCLUCE mod. PIXOL200

PIXOL200

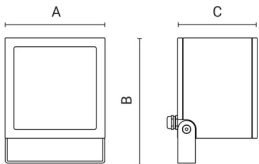
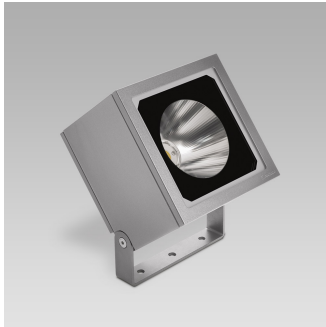
performance



Arcluce Code

0656023F-21

Ex Code



Technical information

Light source:	LED, 31W, RGBW
Luminaire:	40W
LED life time:	> 60000h - L80 - B20 (Ta 25°C)
Power supply:	220-240V 50/60Hz
Wiring:	DMX
Optics:	elliptic 12°x54°
Color:	Aluminium - 21
Weight:	5.4 kg
Size:	A: 200mm B: 250mm C: 160mm

CE

IP66

IK08



0,03m²

Appliance

- Die-cast aluminium body and trim (EN 47100).
- Double layer polyester powder paint resistant to corrosion and salt spray fog.
- Silicone rubber gaskets.
- AISI 316 stainless steel external screws.
- Reflector made of engineering plastic metalized in high-vacuum.
- Screen made of 5mm thermal-shock resistant tempered glass.
- High quality LED sources characterized according to IES TM-30, with high color consistency <3SDCM and long useful life >60000 hours at L80.

Installation

- Galvanized and painted steel bracket.
- M16 stainless steel cable gland.

Note

- Available versions with Casambi and other modern control systems, for more information see "Light controls" section.

Norm

- It complies with standards EN 60598-1 and EN 60598-2-5.

PIXOL200

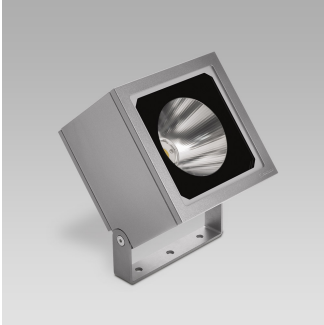
performance



Arcluce Code

0656023F-21

Ex Code



Specifications

Floodlight for outdoor lighting, able to integrate into any architectural context thanks to its clean design and functional and comfortable lighting.

Die-cast aluminium body and trim (EN 47100). Double layer polyester powder paint resistant to corrosion and salt spray fog. Silicone rubber gaskets. AISI 316 stainless steel external screws. Reflector made of engineering plastic metalized in high-vacuum. Screen made of 5mm thermal-shock resistant tempered glass. High quality LED sources characterized according to IES TM-30, with high color consistency <3SDCM and long useful life >60000 hours at L80.

It complies with standards EN 60598-1 and EN 60598-2-5.

LED source in RGBW version.

System effectiveness, minimum

Luminaire in insulation class I.

DRIVER INCLUDED.

Galvanized and painted steel bracket. M16 stainless steel cable gland.

Available versions with Casambi and other modern control systems, for more information see "Light controls" section.

Brand ARCLUCE mod. PIXOL200

PIXOL200

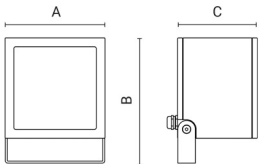
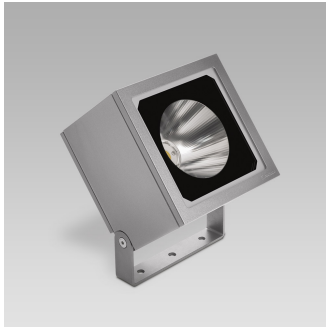
performance



Arcluce Code

0656024F-21

Ex Code



Technical information

Light source: LED, 31W, RGBW

Luminaire: 40W

LED life time: > 60000h - L80 - B20 (Ta 25°C)

Power supply: 220-240V 50/60Hz

Wiring: DMX

Optics: elliptic 54°x12°

Color: Aluminium - 21

Weight: 5.4 kg

Size:
A: 200mm
B: 250mm
C: 160mm

CE

IP66

IK08



0,03m²

Appliance

- Die-cast aluminium body and trim (EN 47100).
- Double layer polyester powder paint resistant to corrosion and salt spray fog.
- Silicone rubber gaskets.
- AISI 316 stainless steel external screws.
- Reflector made of engineering plastic metalized in high-vacuum.
- Screen made of 5mm thermal-shock resistant tempered glass.
- High quality LED sources characterized according to IES TM-30, with high color consistency <3SDCM and long useful life >60000 hours at L80.

Installation

- Galvanized and painted steel bracket.
- M16 stainless steel cable gland.

Note

- Available versions with Casambi and other modern control systems, for more information see "Light controls" section.

Norm

- It complies with standards EN 60598-1 and EN 60598-2-5.

PIXOL200

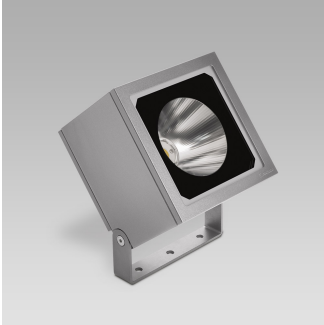
performance



Arcluce Code

0656024F-21

Ex Code



Specifications

Floodlight for outdoor lighting, able to integrate into any architectural context thanks to its clean design and functional and comfortable lighting.

Die-cast aluminium body and trim (EN 47100). Double layer polyester powder paint resistant to corrosion and salt spray fog. Silicone rubber gaskets. AISI 316 stainless steel external screws. Reflector made of engineering plastic metalized in high-vacuum. Screen made of 5mm thermal-shock resistant tempered glass. High quality LED sources characterized according to IES TM-30, with high color consistency <3SDCM and long useful life >60000 hours at L80.

It complies with standards EN 60598-1 and EN 60598-2-5.

LED source in RGBW version.

System effectiveness, minimum

Luminaire in insulation class I.

DRIVER INCLUDED.

Galvanized and painted steel bracket. M16 stainless steel cable gland.

Available versions with Casambi and other modern control systems, for more information see "Light controls" section.

Brand ARCLUCE mod. PIXOL200

PIXOL200

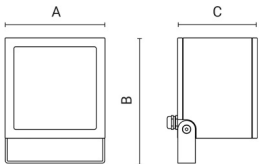
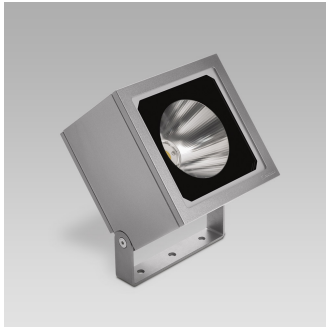
performance



Arcluce Code

0656025F-21

Ex Code



Technical information

Light source:	LED, 31W, RGBW
Luminaire:	40W
LED life time:	> 60000h - L80 - B20 (Ta 25°C)
Power supply:	220-240V 50/60Hz
Wiring:	DMX
Optics:	asymmetric lmax=19°
Color:	Aluminium - 21
Weight:	5.4 kg
Size:	A: 200mm B: 250mm C: 160mm

CE

IP66

IK08



0,03m²

Appliance

- Die-cast aluminium body and trim (EN 47100).
- Double layer polyester powder paint resistant to corrosion and salt spray fog.
- Silicone rubber gaskets.
- AISI 316 stainless steel external screws.
- Reflector made of engineering plastic metalized in high-vacuum.
- Screen made of 5mm thermal-shock resistant tempered glass.
- High quality LED sources characterized according to IES TM-30, with high color consistency <3SDCM and long useful life >60000 hours at L80.

Installation

- Galvanized and painted steel bracket.
- M16 stainless steel cable gland.

Note

- Available versions with Casambi and other modern control systems, for more information see "Light controls" section.

Norm

- It complies with standards EN 60598-1 and EN 60598-2-5.

PIXOL200

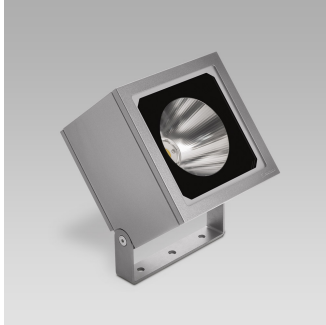
performance



Arcluce Code

0656025F-21

Ex Code



Specifications

Floodlight for outdoor lighting, able to integrate into any architectural context thanks to its clean design and functional and comfortable lighting.

Die-cast aluminium body and trim (EN 47100). Double layer polyester powder paint resistant to corrosion and salt spray fog. Silicone rubber gaskets. AISI 316 stainless steel external screws. Reflector made of engineering plastic metalized in high-vacuum. Screen made of 5mm thermal-shock resistant tempered glass. High quality LED sources characterized according to IES TM-30, with high color consistency <3SDCM and long useful life >60000 hours at L80.

It complies with standards EN 60598-1 and EN 60598-2-5.

LED source in RGBW version.

System effectiveness, minimum

Luminaire in insulation class I.

DRIVER INCLUDED.

Galvanized and painted steel bracket. M16 stainless steel cable gland.

Available versions with Casambi and other modern control systems, for more information see "Light controls" section.

Brand ARCLUCE mod. PIXOL200