



LED LIGHTING SPECIALISTS

ARCHITECTURAL

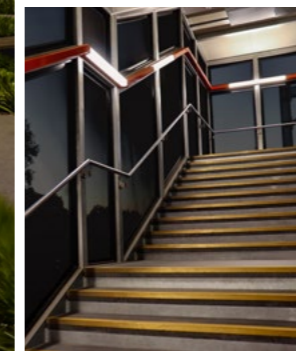
COMMERCIAL

INDUSTRIAL

Advanced Lighting Technologies has been a leader in the lighting market for over 30 years.

With an established presence in Australia, New Zealand and Southeast Asia, we specialise in architectural, commercial and industrial lighting solutions designed for dozens of applications and industries.

Our relationship with leading lighting manufacturers around the world allows us to supply a wide variety of high-quality, innovative lighting solutions specific to your project requirements. This, coupled with a range of professional services provided by qualified industry experts, means we offer a holistic lighting solution designed to exceed our clients' expectations every time.



## World Leading Lighting Manufacturers

We source high-quality lighting products directly from leading manufacturers from around the world. These innovative products are designed with the latest technology and are backed by industry-leading warranties. Our product range can be tailored to your budget and application constraints while maintaining the highest standard of performance.

### Our Brands



### Brands we offer

**Arcluce** 

Our architectural range has been sourced from Italian manufacturer Arcluce. Carefully chosen to meet the most demanding requirements of lighting designers, architects and end users, these products feature high-quality European design and craftsmanship, backed by a 5 year guarantee.

**Arianna** 

Arianna is an Italian company, specialising in designing and manufacturing LED lighting systems. The patented optics found in the Arianna Petrarca LED floodlight offer high-mast illumination with high efficiency, uniformity and visual comfort.

**Cree Lighting** 

Cree Lighting is a global, market-leading developer of LED lighting products. Cree Lighting have been at the forefront of LED technology for over 25 years and continue to introduce new and exciting innovation through research and development. Advanced Lighting Technologies are the sole authorised distributor of Cree Lighting products in Australia.

**DimOnOff** 

Considered a pioneer and innovator in wireless control and remote monitoring technology, DimOnOff's platform is a result of over 10 years of research aimed at creating the ultimate energy monitoring and management system.

**Orca Solar Lighting** 

Orca Solar Lighting are the experts in solar lighting, designing and building solutions specifically for Australian conditions. Advanced Lighting Technologies are pleased to offer Orca Solar Lighting's range of solar pole-mounted luminaire systems in select states.

**PRACHT** 

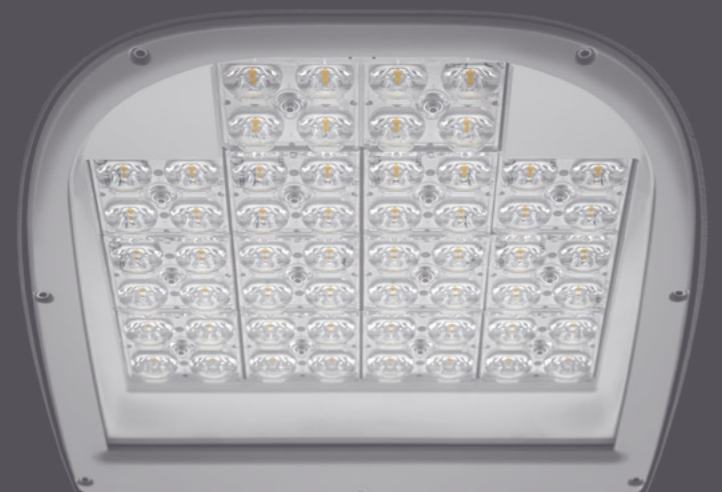
With a wide range of luminaires featuring precise German engineering, PRACHT are considered the specialists when it comes to efficient and effective illumination under extreme conditions. PRACHT offer luminaires designed to withstand extreme temperatures, vandalism, chemical vapours, hazardous areas and more.

**Survivor Lighting** 

Survivor Lighting are the experts in creating robust linear-extruded luminaires designed to thrive in the most challenging environments. Every system is manufactured in Australia using high-quality materials. Advanced Lighting Technologies are proud to be the exclusive distribution partner of Survivor Lighting products in Victoria & Tasmania.

**Holophane** 

For over 120 years the name Holophane has enjoyed an enviable reputation throughout the world for expertise, quality and innovation. Holophane remains synonymous with high performance, low maintenance and cost-effective lighting. Their product portfolio incorporates interior, amenity, street and floodlighting suitable for today's environmentally conscious world.





## Specialists in LED Lighting Solutions

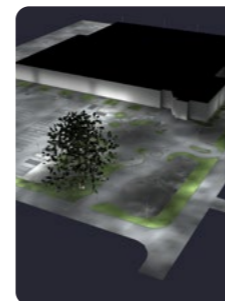
A quality lighting solution has to offer more than reliability, performance and value. It must become part of its surroundings, minimise any impact on the environment and reduce energy consumption.

Our team of dedicated staff includes qualified electrical engineers, lighting designers and members of industry organisations. Our lighting designs and application solutions are produced to meet your project briefs and expectations while ensuring full compliance with Australian Standards.

As an ISO 9001 accredited company, we follow internal work processes designed to streamline our operations and deliver projects in a timely and cost-effective manner.

We can provide full financial analysis including detailed return on investment and cumulative savings calculations. We can also assist in project management and new technology integration to ensure a smooth transition throughout a lighting project.

## In-House Support Services



### Consultation & Design

Solutions & Application Advice  
Lighting Design Services  
Standards Expertise & Application



### Technical Solutions

Product Technical Support  
Control System Design  
& Commissioning



### Financial Analysis

Financial & Payback Analysis  
Energy Savings Calculations  
Project Financing Options



### Project Support

Project Management  
Sales and Customer Service Support



# Applications

## ARCHITECTURAL

Carefully chosen to meet the most demanding requirements, our Architectural products feature high-quality European design and craftsmanship.



## AREA & STREET

To fulfill the needs of modern area and street lighting, we offer low, medium and high wattage LED luminaires with a wide range of optical distributions.



## AUTO DEALERSHIP

We can provide a complete lighting solution for automotive dealerships, including car yard, showroom, office and workshop lighting.



Photo Credit: Ron Tan

## CAR PARK (OUTDOOR)

Outdoor car park lighting should focus on compliance, security and safety. Pedestrians should be visible to drivers at all times.



## CAR PARK (UNDERCOVER)

We can supply a complete multi-level car park lighting solution, covering parking areas, transition zones, stairwells, ramps, pedestrian walkways and more.



## EDUCATION & HEALTHCARE

A lighting solution specifically designed for healthcare or education should help to create a nurturing and positive environment.





**HAZARDOUS ENVIRONMENTS**

Explosion proof luminaires are essential in environments where the presence of flammable gases and vapours or ignitable dust and fibres could create a hazardous atmosphere.



**INDUSTRIAL & HARSH ENVIRONMENTS**

Our range includes luminaires specifically engineered to withstand the harsh conditions often found in industrial and manufacturing facilities.

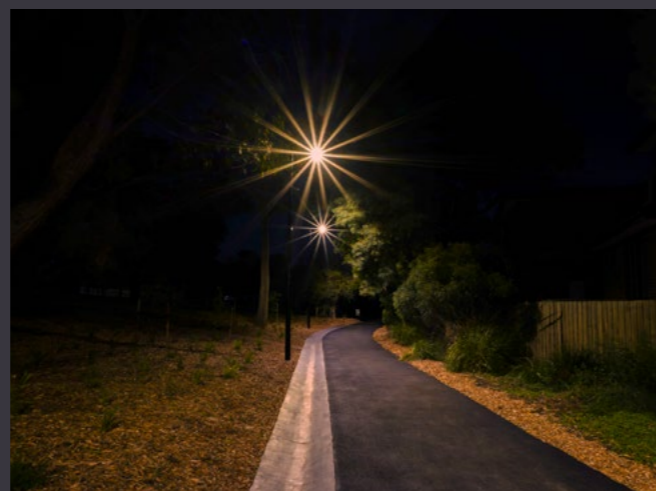


**OFFICE & COMMERCIAL**

Thoughtfully designed office lighting can improve the well-being of employees and visitors by helping to create productive and welcoming surroundings.

**PARK & PATHWAY**

Lighting for public spaces should consider more than just functionality and performance. Well-designed compliant public lighting can improve visibility and provide a sense of safety.



**PETROLEUM**

We've worked with some of Australia's largest fuel retailers to provide LED lighting solutions that help reduce energy consumption and maintenance costs.



**RAILWAY**

Lighting railway infrastructure can be a complex task. Compliance, glare, safety and visibility all need to be strongly considered during the design phase.



**RETAIL & SHOPPING PRECINCT**

Retail lighting requirements can vary significantly depending on the application. Our qualified industry experts can guide you through the lighting design process from start to finish.





**SMART LIGHTING CONTROLS**

We're proud to supply smart lighting control systems from one of the world's leading providers. DimOnOff are considered a pioneer and innovator in wireless control and remote monitoring technology.



**SOLAR LIGHTING SOLUTIONS**

Our solar partners, Orca Solar Lighting are the experts in designing and building solar lighting solutions specifically for Australian conditions.



**SWIMMING POOL & AQUATIC CENTRES**

Illuminating indoor and outdoor swimming pools present a unique set of challenges. Safety, visibility and the venue's conditions all need to be considered.



**URBAN ENVIRONMENT**

Quality urban lighting has to offer more than reliability, performance and value. It should integrate seamlessly into its surroundings, minimise any impact on the environment and consume minimal energy.



**SPORTS & RECREATION (INDOOR)**

Indoor sports lighting should help to create a safe and comfortable viewing experience for participants, officials and spectators.



**SPORTS & RECREATION (OUTDOOR)**

We offer LED lighting solutions for all outdoor sports and levels of competition, from residential tennis courts to Australian Rules football fields, and everything in between.



**WAREHOUSE & FACTORY**

From cold storage and high-rack areas to loading docks or production facilities – we supply a wide range of LED lighting solutions suitable for warehouses and factories.



**WILDLIFE FRIENDLY**

Our wildlife-friendly lighting options feature specially designed amber LEDs that produce light of a narrow spectral distribution, less visible to turtles and other wildlife.



**adlt.com.au** | *The Ultimate Technical Resource*



Visit our website for more information on our full product range, including spec sheets, photometric files and more.

**Advanced Lighting Technologies  
Australia Inc**

**Head Office**  
110 Lewis Road  
Wantirna South, Victoria  
AUSTRALIA 3152

T: +61 3 9800 5600  
E: sales@adlt.com.au  
W: adlt.com.au

**Advanced Lighting Technologies  
New Zealand Ltd**

**Head Office**  
Unit 1, 9 Orbit Drive  
Rosedale, Auckland 0632  
NEW ZEALAND

**Tauranga Office**  
8 Boeing Place  
Mount Maunganui 3116  
NEW ZEALAND

T: +64 0800 788 369  
E: sales@adlt.co.nz  
W: adlt.co.nz

**Advanced Lighting Technologies  
Asia Pte Ltd**

**Postal Address**  
10 Anson Road  
#17-04 International Plaza  
SINGAPORE 079903

**Shipping/Warehouse**  
EBS Logistics  
4 Pandan Crescent  
#04-01, Loading Bay No. 26-31  
SINGAPORE 128475

T: +65 6844 2338  
WhatsApp: +65 9777 3744  
E: sales@adlt.com.sg  
W: adlt.com.sg