

CFL Series

CFL LARGE



CREE LIGHTING

Product Description

The CFL Series Floodlight provides general area lighting and improve the overall look of façades and signage.

The slim, low profile design adds architectural appeal to any general flood lighting application with crisp uniform white light that offer high performance maximizing energy savings. With remarkable light quality and smooth white light, buildings and signage will stand out in the crowd.

Applications: : Industry, parking lots, monuments and general area spaces.

Performance Summary

Efficacy: up to 135 lm/W

Lumen Output: 27000 - 36000 lm

IP Rating: IP66

Limited Warranty: 5 years

Extended warranty may be available on certain projects. Contact ADLT for more information.

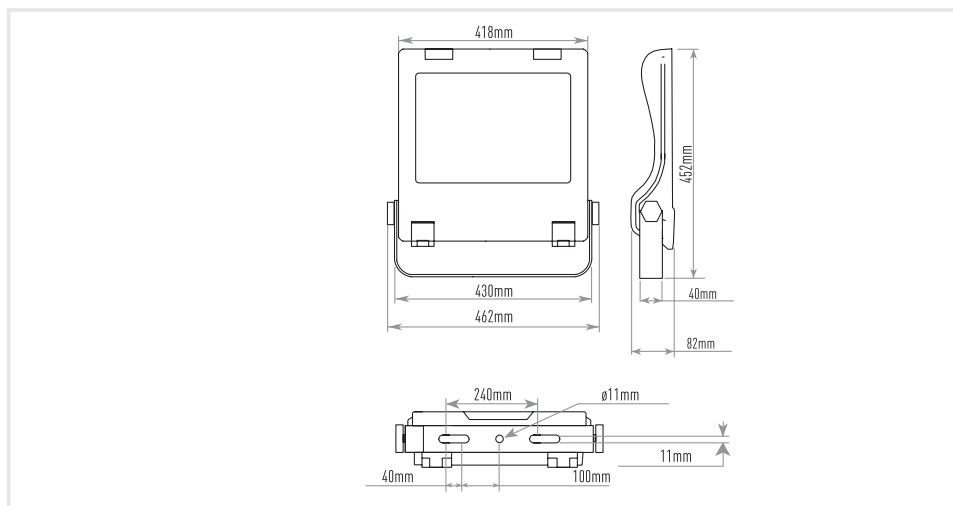


Ordering Information

EX: CFL-B-ASM-E-40K--+24-BK-FX-01

CFL	B	ASM	E	40K	+	24	BK	FX	01
Product	Version	Optic	Input Power	CCT	Insulation Class	Voltage	Finish	Control Option	Cable Length
CFL CFL Large	- B	- ASM Asymmetric WFL Wide Flood 30 Flood 30° 15 Spot 15° 275 Type II Short	- E 200W F 250W	- 40K 30K*	- + Class 1	- 24 220-240V	- BK Black	- FX Fixed Output DL DALI VM Virtual Midnight	- 01 Exit cable 1,5 m

* (On request for MOQ)



CFL Series

CFL LARGE



FEATURES

- Efficacy: up to 135 lm/W
- Lumen Output: 27000 - 36000 lm
- Tool-less entry through buckles integrated
- CRI: Minimum 70
- Lifetime: L80F10 Up to >180Khrs Ta=25°C (>180Khrs L80 IESNA TM-21)
- Operative temperature -30°C up to 40°C
- Input Voltage: 220-240V, 50/60Hz
- Power factor: Up to > 0.92 at full load
- Surge protection: 10kV CM / 6kV DM surge immunity according to EN 61000-4-5 and EN 61547
- Enclosure rated IP66 per IEC 60529
- Impact resistance IK08
- Control Option: Fixed Output, DALI, Virtual Midnight (VM ON-100% / 00:00 -50% / 06:00-100%)

CONSTRUCTION AND MATERIALS

- Die cast aluminum housing treated with electrophoresis and powder coating for strong anti-corrosion performance.
- Extra clear silk printed tempered glass
- Bracket surface featuring hot galvanizing processing, providing strong corrosion resistance.
- Tool free adjustable bracket +/-90° by means of mechanical locking with graduated scale of 10°
- Vent integrated to prevent moisture and balance atmosphere pressure

WARRANTY AND CERTIFICATIONS

- Limited Warranty: 5 years (ask us about extended warranty!)
- CE Mark / RoHs Compliant / ENEC mark / CB mark
- Risk group exempt in accordance with Standard CEI EN62471 for photobiological safety (Tested IEC/TR62778)
- Compliant to: EN 60598-1; EN 60598-2-3, EN 60598-2-5

ELECTRICAL DATA*

Input Power Designator	System Watts	Total Current	Power Factor
		@230V, 50Hz	
E	200W	0,86 A	0,92
F	250W	1.0 A	0,92

* Electrical data at 25°C (77°F)

PRODUCT WEIGHT T AND MAXIMUM WIND AREA

Weight	Lateral Surface Wind Exposed
8.9 kg	0.197m ²

CFL Series

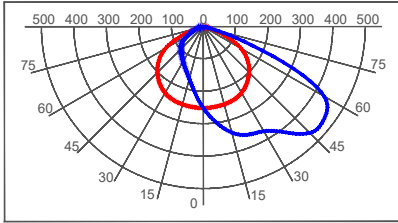
CFL LARGE



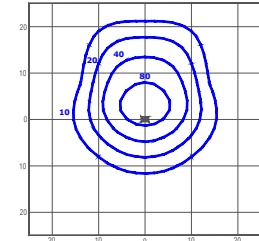
Photometry

All published luminaire photometric testing performed to IESNA LM-79-08 standards by an external laboratory. To obtain an IES file specific to your project consult: www.creelighting-europe.com.

ASM - ASYMMETRIC



cd/klm
— C0 - C180 — C90 - C270 — C90 - C270

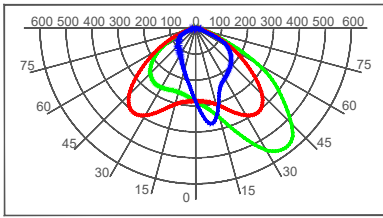


lux
CFL-B-ASM-F-40K_250-F01602
Mounting Height: 10m

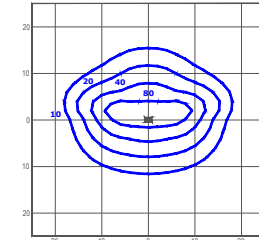
LUMEN OUTPUT - ASM	
Input Power Designator	4000K
	Initial Delivered Lumens*
E	29444
F	36142

* Initial delivered lumens at 25°C (77°F). Actual production yield may vary between -4 and +10% of initial delivered lumens

WFL - WIDE FLOOD



cd/klm
— C0 - C180 — C90 - C270 — C15 - C195

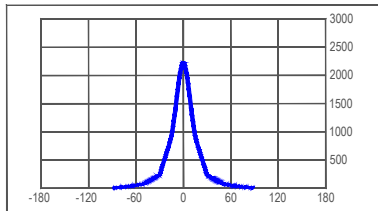


lux
CFL-B-WFL-F-40K_250-F00801
Mounting Height: 10m

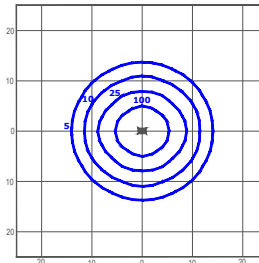
LUMEN OUTPUT - WFL	
Input Power Designator	4000K
	Initial Delivered Lumens*
E	28128
F	34787

* Initial delivered lumens at 25°C (77°F). Actual production yield may vary between -4 and +10% of initial delivered lumens

30° - FLOOD 30°



cd/klm
— C90 - C270

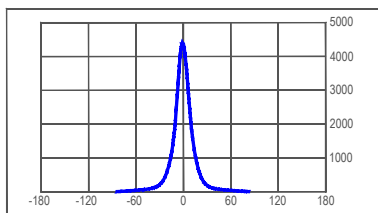


lux
CFL-B-30-F-40K_250-F01604
Mounting Height: 10m

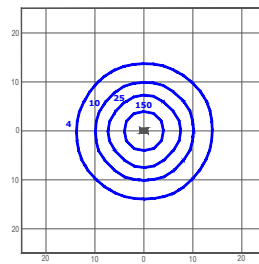
LUMEN OUTPUT - 30°	
Input Power Designator	4000K
	Initial Delivered Lumens*
E	29598
F	36139

* Initial delivered lumens at 25°C (77°F). Actual production yield may vary between -4 and +10% of initial delivered lumens

15° - FLOOD 15°



cd/klm
— C90 - C270



lux
CFL-B-15-F-40K_250-F01603
Mounting Height: 10m

LUMEN OUTPUT - 15°	
Input Power Designator	4000K
	Initial Delivered Lumens*
E	29810
F	36369

* Initial delivered lumens at 25°C (77°F). Actual production yield may vary between -4 and +10% of initial delivered lumens

CFL Series

CFL LARGE

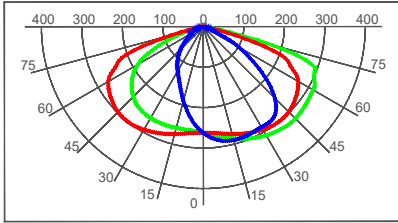


CREE LIGHTING

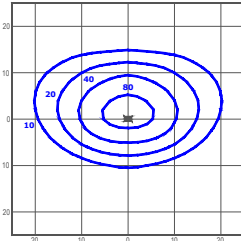
Photometry

All published luminaire photometric testing performed to IESNA LM-79-08 standards by an external laboratory. To obtain an IES file specific to your project consult: www.creelighting-europe.com.

275 - TYPE II SHORT



cd/klm
— C0 - C180 — C90 - C270 — C15 - C195



lux
 CFL-B-275-F-40K_250-R01602
 Mounting Height: 10m

LUMEN OUTPUT - 275 Type II Short	
Input Power Designator	4000K
	Initial Delivered Lumens*
E	28177
F	34584

* Initial delivered lumens at 25 °C (77 °F). Actual production yield may vary between -4 and +10% of initial delivered lumens

© 2021 Cree Lighting. All rights reserved. For informational purposes only. Content is subject to change. Patent www.creelighting.com/patents. Cree® and the Cree logo are registered trademarks and the Cree SmartCast Technology Logo is a trademark of Cree, Inc.