

# CFL Series

CFL MEDIUM



**CREE** LIGHTING

## Product Description

The CFL Series Floodlight provides general area lighting and improve the overall look of façades and signage.

The slim, low profile design adds architectural appeal to any general flood lighting application with crisp uniform white light that offer high performance maximizing energy savings. With remarkable light quality and smooth white light, buildings and signage will stand out in the crowd.

**Applications:** : Industry, parking lots, monuments and general area spaces.

## Performance Summary

**Efficacy:** up to 135 lm/W

**Lumen Output:** 10800 - 21000 lm

**IP Rating:** IP66

**Limited Warranty:** 5 years

*Extended warranty may be available on certain projects. Contact ADLT for more information.*

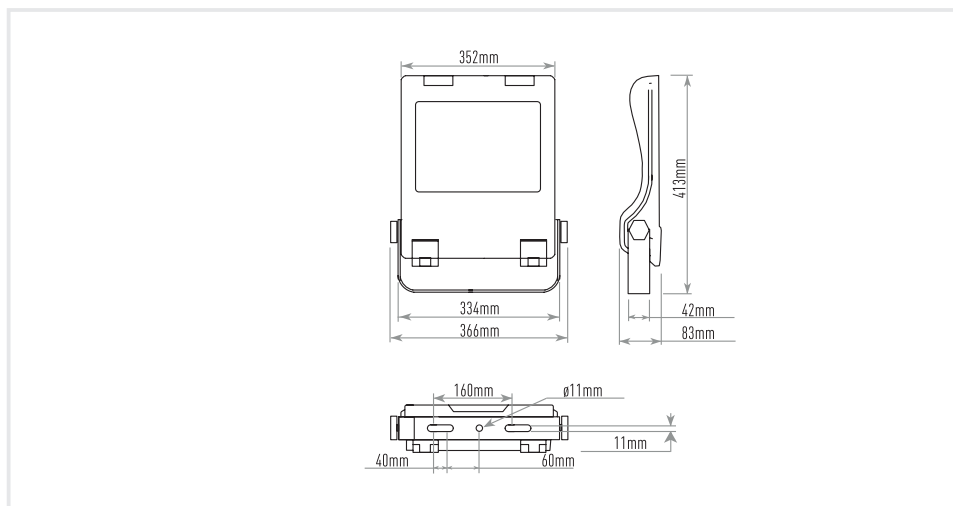


## Ordering Information

EX: CFL-B-ASM-E-40K-+-24-BK-FX-01

CFL	B	ASM	C	40K	+	24	BK	FX	01
Product	Version	Optic	Input Power	CCT	Insulation Class	Voltage	Finish	Control Option	Cable Length
CFL CFL Medium	- B	ASM Asymmetric	- C 100W	- 40K	- + Class 1	- 24 220-240V	- BK Black	- FX Fixed Output	- 01 Exit cable 1,5 m
		WFL Wide Flood	D 150W	30K				DL DALI	
		30 Flood 30°						VM Virtual Midnight	
		15 Spot 15°							
		275 Type II short							

\* (On request for MOQ)



# CFL Series

CFL MEDIUM



## FEATURES

- Efficacy: up to 135 lm/W
- Lumen Output: 10800 - 21000 Lm
- Tool-less entry through buckles integrated
- Lifetime: L80F10 Up to >180Khrs Ta=25°C (>180Khrs L80 IESNA TM-21)
- Operative temperature -30°C up to 40°C
- Input Voltage: 220-240V, 50/60Hz
- Power factor: Up to > 0.92 at full load
- Surge protection: 10kV CM / 6kV DM surge immunity according to EN 61000-4-5 and EN 61547
- Enclosure rated IP66 per IEC 60529
- Impact resistance IK08
- Control Option: Fixed Output, Dali, Virtual Midnight (VM ON-100% / 00:00 - 50% / 06:00-100%)

## CONSTRUCTION AND MATERIALS

- Die cast aluminum housing treated with electrophoresis and powder coating for strong anti-corrosion performance.
- Extra clear silk printed tempered glass
- Bracket surface featuring hot galvanizing processing, providing strong corrosion resistance.
- Tool free adjustable bracket +/-90° by means of mechanical locking with graduated scale of 10°
- Vent integrated to prevent moisture and balance atmosphere pressure

## WARRANTY AND CERTIFICATIONS

- Limited Warranty: 5 years (Ask us about extended warranty)
- CE Mark / RoHs Compliant / ENEC mark / CB mark
- Risk group exempt in accordance with Standard CEI EN62471 for photobiological safety (Tested IEC/TR62778)
- Compliant to: EN 60598-1; EN 60598-2-3, EN 60598-2-5

## ELECTRICAL DATA\*

Input Power Designator	System Watts	Total Current	Power Factor
		@230V, 50Hz	
C	100W	0.43 A	0,92
D	150W	0.64A	0,92

\* Electrical data at 25°C (77°F)

## PRODUCT WEIGHT T AND MAXIMUM WIND AREA

Weight	Lateral Surface Wind Exposed
6.8 kg	0.14m <sup>2</sup>

# CFL Series

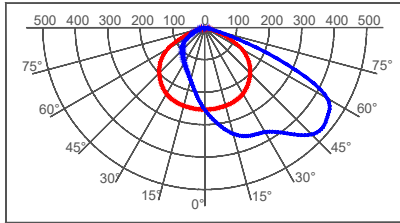
CFL MEDIUM



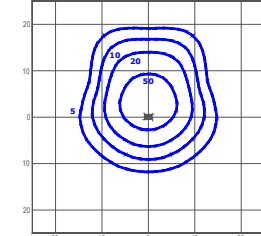
## Photometry

All published luminaire photometric testing performed to IESNA LM-79-08 standards by an external laboratory. To obtain an IES file specific to your project consult: [www.creelighting-europe.com](http://www.creelighting-europe.com).

### ASM - ASYMMETRIC



cd/klm  
— C0 - C180    — C90 - C270    — C90 - C270

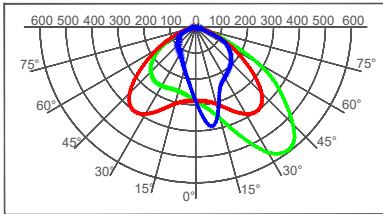


lux  
**CFL-B-ASM-D-40K\_150-F01602**  
**Mounting Height: 8m**

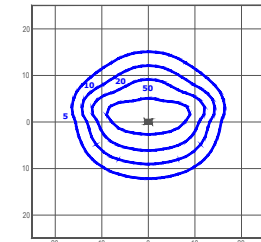
LUMEN OUTPUT - ASM	
Input Power Designator	4000K
	Initial Delivered Lumens*
C	14550
D	21796

\* Initial delivered lumens at 25°C (77°F). Actual production yield may vary between -4 and +10% of initial delivered lumens

### WFL - WIDE FLOOD



cd/klm  
— C0 - C180    — C90 - C270    — C15 - C195

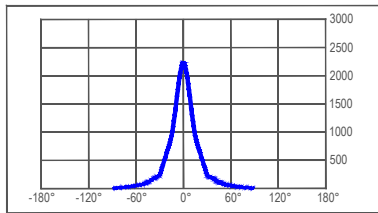


lux  
**CFL-B-WFL-D-40K\_150-F00801**  
**Mounting Height: 8m**

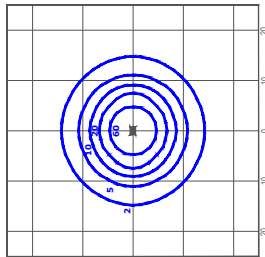
LUMEN OUTPUT - WFL	
Input Power Designator	4000K
	Initial Delivered Lumens*
C	14064
D	21086

\* Initial delivered lumens at 25°C (77°F). Actual production yield may vary between -4 and +10% of initial delivered lumens

### 30° - FLOOD 30°



cd/klm  
— C90 - C270

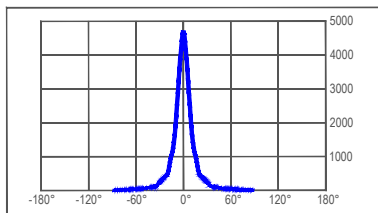


lux  
**CFL-B-30-D-40K\_150-F01604**  
**Mounting Height: 8m**

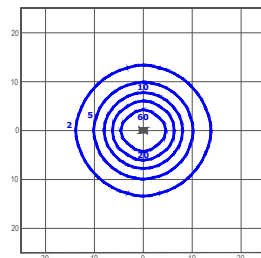
LUMEN OUTPUT - 30°	
Input Power Designator	4000K
	Initial Delivered Lumens*
C	14498
D	21914

\* Initial delivered lumens at 25°C (77°F). Actual production yield may vary between -4 and +10% of initial delivered lumens

### 15° - FLOOD 15°



cd/klm  
— C90 - C270



lux  
**CFL-B-15-D-40K\_150-F01603**  
**Mounting Height: 8m**

LUMEN OUTPUT - 15°	
Input Power Designator	4000K
	Initial Delivered Lumens*
C	14644
D	21954

\* Initial delivered lumens at 25°C (77°F). Actual production yield may vary between -4 and +10% of initial delivered lumens

# CFL Series

CFL MEDIUM

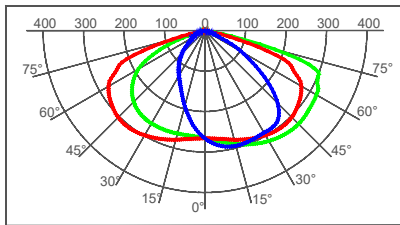


**CREE** LIGHTING

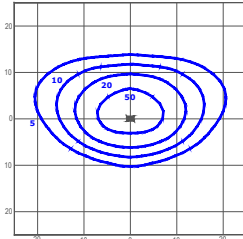
## Photometry

All published luminaire photometric testing performed to IESNA LM-79-08 standards by an external laboratory. To obtain an IES file specific to your project consult: [www.creelighting-europe.com](http://www.creelighting-europe.com).

### 275 - Type II short



cd/klm  
— C0 - C180    — C90 - C270    — C15 - C195



lux  
**CFL-B-275-D-40K\_150-R01602**  
**Mounting Height: 8m**

LUMEN OUTPUT - 275 Type II short	
	<b>4000K</b>
<b>Input Power Designator</b>	Initial Delivered Lumens*
C	14725
D	21233

\* Initial delivered lumens at 25°C (77°F). Actual production yield may vary between -4 and +10% of initial delivered lumens

© 2021 Cree Lighting. All rights reserved. For informational purposes only. Content is subject to change. Patent [www.creelighting.com/patents](http://www.creelighting.com/patents). Cree® and the Cree logo are registered trademarks and the Cree SmartCast Technology Logo is a trademark of Cree, Inc.

Advanced Lighting Technologies Australia Inc  
 Advanced Lighting Technologies New Zealand Ltd  
 Advanced Lighting Technologies Asia Pte Ltd

Australia  
 New Zealand  
 Singapore

+61 3 9800 5600  
 +64 9 415 6332  
 +65 6844 2338

[www.adlt.com.au](http://www.adlt.com.au)  
[www.adlt.co.nz](http://www.adlt.co.nz)  
[www.adlt.com.sg](http://www.adlt.com.sg)

Rev. Date: 7 October 2021