

# Energy UNO

LED Street/Area Luminaire



**CREE** LIGHTING

## Product Description

Designed as a complete street lighting system and optimized for LED light sources, it is distinguished by its extraordinary efficiency. Energy UNO provides the best lighting solution.

Developed with three product sizes, four lumens package per size, a complete optical range, flux adjustment options and a wide range of light sources together with a comprehensive optical range, stand-alone flow control options and Zhaga connectivity. Energy can be mounted on a pole or bracket with an adjustability of 20° and with 5° increments. Adjustments can be done from outside without having to open the product cover

**Applications:** Urban and internal roads, pedestrian walkways and car parks.

## Performance Summary

**Efficacy:** up to 160lm/W

**Initial Delivered LED Lumens:** up to 8600lm

**Lifetime color consistency:** 4SDM

**Limited Warranty:** 5 years on luminaire

*Extended warranty (up to 10 years) available for approved projects. Contact ADLT for further information.*



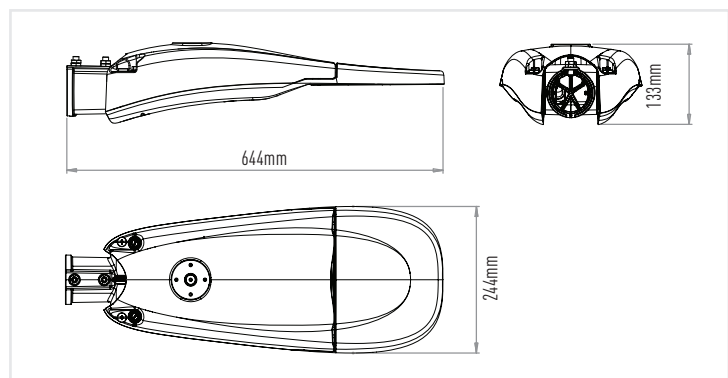
## Ordering Information

Eg: TRSA-2-K07-2L-407-+-A-SG-FX-S-S-00+ FXA10HA0-00001

TRSA	- 2	- K07	- 2L	- 228	- +	- A	- SG	- FX	- S	- S	- 00
Product	Mounting	Optic	Lumen Package	CCT	Insulation Class	Voltage	Finish	Options	Variant	Protection	Cable length
TRSA	2 horiz/vert tenon 60mm	K07 NanoComfort Narrow Street	2L* Up to 2100lm	228* 2200K CRI80	+ Class 1	A 220-240V	BK Black Textured	FX	S No socket / No sensor	S By Driver	00 Standard no cable
		075 Narrow Street 0.75 (T2S)	4L Up to 4300lm	278* 2700K CRI80				^ Class 2			
		K10 NanoComfort Medium Street	6L Up to 6500lm	308 3000K CRI80	DL						
		100 Medium Street 1.00 (T2S)	8L Up to 8600lm	407 4000K CRI70	CL						
		K12 NanoComfort Broad Street		577* 5700K CRI70	VMC						
		125 Broad Street 1.25 (T2S)			VM						
	3 horiz/vert tenon 76mm	150 Wide Street 1.50 (T3S)				FX Fixed Output (setting on request)	Z Zhaga Socket/ D4i driver	DL	N* Nema Socket 7 pin	U 10 kV	01 Exit Cable 1 m
		200 Extra Wide Street 2.00(T4S)			CL						
		SCP Street & Cycle Path class P(T2S)			VMC						
		AFN* Area Flood Narrow			VM						
		ARS RotoSymmetric Area			CL						
		PCR* Pedestrian Crossing Right			VMC						
PCL* Pedestrian Crossing Left								UF* 10 kV +Fuse	03* Exit Cable 3 m	06* Exit Cable 6 m	10* Exit Cable 10 m

\*Denotes non-standard option. MOQ & longer lead time may apply. Contact ADLT for more information.

ADAPTER	
KIT-TRS-AP60-42-48-V0	Fitter kit to mount to 42 & 48 mm tenon



## FEATURES

- Available with **NanoComfort®** precision optical system
- LED Lumen output up to 8600lm
- Zhaga Book 15 compliant LED module efficiency (excluding optical system):  $\geq 185$  lm/W
- Luminaire efficiency (including optical losses): up to 160 lm/W
- CCT: 4000K Ra70, 3000K Ra80 (2200K, 2700K, 3000K Ra70 on request)
- CRI Standard min. 70, CRI80 @3000K
- Initial Chromatic Selection:  $\leq 4$ -Step MacAdam ellipse or  $\Delta u'v' \leq 0.003$  (LM80:08)
- Luminous flux maintenance factor: L90B10 up to  $> 100,000$  hours  $T_a=25^\circ\text{C}$  (According to IESNA TM-21)
- Degree of protection optical compartment and wiring compartment: IP66 (IEC 60529)
- Optical compartment and wiring compartment impact resistance:  $\geq IK10$  (EN 62262)
- Overvoltage protection: up to 10kV CM/DM according to EN 61000-4-5 and EN 61547
- Driver equipped with over-temperature protection for optimal performance and safety
- Power factor:  $\geq 0.98$  at full load
- Operating temperature:  $-40^\circ\text{C}$  up to  $+50^\circ\text{C}$
- Control options: Virtual Midnight and Constant Light Protocol are adjustable via the main, DALI 2, D4i
- Available with fuse and 20mm Zhaga Book 18 connector
- Backlight control accessory available on request for selected lenses
- SPD with LED fault indicator (Standard in class 1, available on request in Class 2)

## CONSTRUCTION AND MATERIALS

- Die-cast aluminum body with low copper content
- Power supply compartment accessible without the use of tools
- Removable wiring plate
- Knife disconnecter
- 4mm thick ultra clear transparent glass protection screen
- Replaceable PMMA lenses
- Replaceable LED board equipped with ESD protection
- Cable type H07RN-F (Cable length up to 10m)
- Easy installation: wiring compartment installed on the cover and pre-assembled integrated joint - to install the luminaire it is not necessary to open it if outgoing cable version,
- Practicality in ordinary and extraordinary maintenance: power supply compartment accessible and component holder plate removable without tools; lenses and LEDs easily removable and replaceable using a single tool.
- Luminaire assembled without the use of adhesives, completely disassembled and recyclable

## WARRANTY AND CERTIFICATIONS

- Warranty: 5 years / 10 years on request
- CE /CB /ENEC /RoHS/RCM
- Risk group exempt in accordance with Standard CEI EN 62471 for photobiological safety (Tested IEC/TR62778)
- Compliant to: EN 60598-1; EN 60598-2-3
- Lead-free powder coatings with excellent exterior durability, conforms to the requirements:
  - Adhesion - test comply with ISO 2409
  - Salt spray - test NSS comply with ISO 9227
  - Accelerated Weathering - test UV comply with ISO 16474-2 (ex ISO 11507)
  - Constant humidity - test comply with ISO 6270-1

## ELECTRICAL DATA\*

Lumen Package	System Watts 220-240V	Total Current	Power Factor
		@230V, 50Hz	
2L	15W	0,07	0,94
4L	28W	0,125	0,97
6L	41W	0,181	0,98
8L	54W	0,238	0,98

\* Electrical data at  $25^\circ\text{C}$  (77°F)

## WEIGHT

WEIGHT	6,5 Kg
--------	--------

## LMF LUXEON - RECOMMENDED LUMEN MAINTENANCE FACTORS (LMF)<sup>1</sup>

Ambient	LMF iniziale	25K hr Projected <sup>2</sup> LMF	50K hr Projected <sup>2</sup> LMF	75K hr Calculated <sup>3</sup> LMF	100K hr Calculated <sup>3</sup> LMF
$25^\circ\text{C}$	1	0,97	0,94	0,92	0,90

## LMF DURIS - RECOMMENDED LUMEN MAINTENANCE FACTORS (LMF)<sup>1</sup>

Ambient	LMF iniziale	25K hr Projected <sup>2</sup> LMF	50K hr Projected <sup>2</sup> LMF	75K hr Calculated <sup>3</sup> LMF	100K hr Calculated <sup>3</sup> LMF
$25^\circ\text{C}$	1	0,99	0,98	0,98	0,97

<sup>1</sup> Lumen maintenance values calculated at  $25^\circ\text{C}$ , with TM-21 based on LM-80 data and on-site testing. DURIS for SCP optic 150 - PCR- PCL and LUXEON for K07 - K10 - K12 - 075, 100, 125 - 200 - AFN - ARS optics

<sup>2</sup> In accordance with IESNA TM-21-11, the values shown in the "projected" column represent interpolated and arc values within six times (6X) the total duration in hours of the tests (performed according to IESNA LM-80-08) to which the device has been subjected ((DUT) e.g. the LED chip).

<sup>3</sup> In accordance with IESNA TM-21-11, the values shown in the column "calculated" are calculated based on a time span greater than six times (6X) the total duration in hours of the tests (performed according to IESNA LM-80-08) to which the device has been subjected ((DUT) e.g. the LED chip).

## ZHAGA OPTIONS AVAILABLE

FX-Z	Zhaga Book 18 connector & D4i driver combined with FX programs (Fixed Power)
VM-Z	Zhaga Book 18 connector & D4i driver combined with VM programs (Virtual Midnight)
CL-Z	Zhaga Book 18 connector & D4i driver combined with CL programs (Constant Light Output)
VMC-Z	Zhaga Book 18 connector & D4i driver combined with VM+CL

**Control options - Variant S - N(Optics K07 - K10 - K12 - 075 - 100 - 125 - 200 - AFN - ARS)**

FX - FIXED OUTPUT					
Setting Code	System Watts W	Nominal flux (lm)			Description
		2700K	3000K	4000K	
<b>LUMEN PACKAGE 8L</b>					
FXA10HA0-00001	54	6872	7782	8640	FIXED OUTPUT 54W
FXA10HA0-00002	36	4847	5489	6094	FIXED OUTPUT 36W
FXA10HA0-00003	27	3729	4223	4689	FIXED OUTPUT 27W
<b>LUMEN PACKAGE 6L</b>					
FXA10FA0-00001	41	5220	5911	6562	FIXED OUTPUT 41W
FXA10FA0-00002	27	3682	4169	4629	FIXED OUTPUT 27W
FXA10FA0-00003	21	2833	3208	3561	FIXED OUTPUT 21W
<b>LUMEN PACKAGE 4L</b>					
FXA10DA0-00001	28	3429	3883	4311	FIXED OUTPUT 28W
FXA10DA0-00002	19	2419	2739	3041	FIXED OUTPUT 19W
FXA10DA0-00003	14	1861	2107	2340	FIXED OUTPUT 14W
<b>LUMEN PACKAGE 2L</b>					
FXA10BA0-00001	15	1694	1918	2130	FIXED OUTPUT 15W
FXA10BA0-00002	10	1195	1353	1502	FIXED OUTPUT 10W
FXA10BA0-00003	8	919	1041	1156	FIXED OUTPUT 8W

VM - VIRTUAL MIDNIGHT (Lumen package 8L - 6L)													
Setting Code	W Max	Nominal flux (lm)			W Med	Nominal flux (lm)			W Min	Nominal flux (lm)			Description
		2700K	3000K	4000K		2700K	3000K	4000K		2700K	3000K	4000K	
<b>LUMEN PACKAGE 8L</b>													
VMA10HA0-0013	54	6872	7782	8640	36	4847	5178	6094	27	3729	4223	4689	VM ON-54W / 21:00-36W / 24:00-27W / 04:00-36W/06:00-54W
VMA10HA0-0014	36	4847	5489	6094	24	3363	3592	4228	19	2543	2879	3197	VM ON-36W / 21:00-24W / 24:00-19W /04:00-24W/06:00- 36W
VMA10HA0-0015	27	3729	4223	4689	19	2543	2716	3197	15	1947	2205	2448	VM ON-27W / 21:00-19W / 24:00-15W / 04:00-19W/06:00-27W
VMA10HA0-0001	54	6872	7782	8640					27	3729	4223	4689	VM ON-54W / 22:00-27W / 06:00-54W
VMA10HA0-0002	54	6872	7782	8640					36	4847	5489	6094	VM ON-54W / 22:00-36W / 06:00-54W
VMA10HA0-0003	36	4847	5489	6094					19	2543	2879	3197	VM ON-36W / 22:00-19W / 06:00-36W
VMA10HA0-0004	36	4847	5489	6094					24	3363	3808	4228	VM ON-36W / 22:00-24W / 06:00-36W
VMA10HA0-0005	27	3729	4223	4689					15	1947	2205	2448	VM ON-27W / 22:00-15W / 06:00-27W
VMA10HA0-0006	27	3729	4223	4689					19	2543	2879	3197	VM ON-27W / 22:00-19W / 06:00-27W
VMA10HA0-0007	54	6872	7782	8640					27	3729	4223	4689	VM ON-54W / 00:00-27W / 06:00-54W
VMA10HA0-0008	54	6872	7782	8640					36	4847	5489	6094	VM ON-54W / 00:00-36W / 06:00-54W
VMA10HA0-0009	36	4847	5489	6094					19	2543	2879	3197	VM ON-36W / 00:00-19W / 06:00-36W
VMA10HA0-0010	36	4847	5489	6094					24	3363	3808	4228	VM ON-36W / 00:00-24W / 06:00-36W
VMA10HA0-0011	27	3729	4223	4689					15	1947	2205	2448	VM ON-27W / 00:00-15W / 06:00-27W
VMA10HA0-0012	27	3729	4223	4689					19	2543	2879	3197	VM ON-27W / 00:00-19W / 06:00-27W
<b>LUMEN PACKAGE 6L</b>													
VMA10FA0-0013	41	5220	5911	6562					21	2833	3208	3561	VM ON-41W / 21:00-27W / 24:00-21W /04:00-27W/06:00- 41W
VMA10FA0-0014	27	3682	4169	4629	27	3682	4169	4629	14	1931	2187	2428	VM ON-27W / 21:00-19W / 24:00-14W /04:00-19W/06:00-27W
VMA10FA0-0015	21	2833	3208	3561	19	2554	2892	3211	11	1479	1675	1859	VM ON-21W / 21:00-14W / 24:00-11W /04:00-14W/06:00-21W
VMA10FA0-0001	41	5220	5220	6562	14	1931	2187	2428	21	2833	3208	3561	VM ON-41W / 22:00-21W / 06:00-41W
VMA10FA0-0002	41	5220	5220	6562					27	3682	3682	4629	VM ON-41W / 22:00-27W / 06:00-41W
VMA10FA0-0003	27	3682	4169	4629					14	1931	2187	2428	VM ON-27W / 22:00-14W / 06:00-27W
VMA10FA0-0004	27	3682	4169	4629					19	2554	2892	3211	VM ON-27W / 22:00-19W / 06:00-27W
VMA10FA0-0005	21	2833	3208	3561					11	1479	1675	1859	VM ON-21W / 22:00-11W / 06:00-21W
VMA10FA0-0006	21	2833	3208	3561					14	1931	1931	2428	VM ON-21W / 22:00-14W / 06:00-21W
VMA10FA0-0007	41	5220	5220	6562					21	2833	3208	3561	VM ON-41W / 00:00-21W / 06:00-41W
VMA10FA0-0008	41	5220	5220	6562					27	3682	4169	4629	VM ON-41W / 00:00-27W / 06:00-41W
VMA10FA0-0009	27	3682	4169	4629					14	1931	2187	2428	VM ON-27W / 00:00-14W / 06:00-27W
VMA10FA0-0010	27	3682	4169	4629					19	2554	2892	3211	VM ON-27W / 00:00-19W / 06:00-27W
VMA10FA0-0011	21	2833	2833	3561					11	1479	1675	1859	VM ON-21W / 00:00-11W / 06:00-21W
VMA10FA0-0012	21	2833	2833	3561					14	1931	2187	2428	VM ON-21W / 00:00-14W / 06:00-21W

**Control options - Variant S - N (Optics K07 - K10 - K12 - 075 - 100 - 125 - 200 - AFN - ARS)**

VM - VIRTUAL MIDNIGHT(Lumen package 4L - 2L)													
Setting Code	W Max	Nominal flux (lm)			W Med	Nominal flux (lm)			W Min	Nominal flux (lm)			Description
		2700K	3000K	4000K		2700K	3000K	4000K		2700K	3000K	4000K	
<b>LUMEN PACKAGE 4L</b>													
VMA10DA0-0013	28	3429	3883	4311	19	2419	2739	3041	14	1861	2107	2340	VM ON-28W / 21:00-19W / 24:00-14W / 04:00-19W/06:00-28W
VMA10DA0-0014	19	2419	2739	3041	13	1678	1900	2110	10	1269	1437	1595	VM ON-19W / 21:00-13W / 24:00-10W / 04:00-13W/06:00-19W
VMA10DA0-0015	14	1861	2107	2340	10	1269	1437	1595	8	972	1100	1221	VM ON-14 / 21:00-10W / 24:00-8W / 04:00-10W/06:00-14W
VMA10DA0-0001	28	3429	3883	4311					14	1861	2107	2340	VM ON-28W / 22:00-14W / 06:00-28W
VMA10DA0-0002	28	3429	3883	4311					19	2419	2739	3041	VM ON-28W / 22:00-19W / 06:00-28W
VMA10DA0-0003	19	2419	2739	3041					10	1269	1437	1595	VM ON-19W / 22:00-10W / 06:00-19W
VMA10DA0-0004	19	2419	2739	3041					13	1678	1900	2110	VM ON-19W / 22:00-13W / 06:00-19W
VMA10DA0-0005	14	1861	2107	2340					8	972	1100	1221	VM ON-14W / 22:00-8W / 06:00-14W
VMA10DA0-0006	14	1861	2107	2340					10	1269	1437	1595	VM ON-14W / 22:00-10W / 06:00-14W
VMA10DA0-0007	28	3429	3883	4311					14	1861	2107	2340	VM ON-28W / 00:00-14W / 06:00-28W
VMA10DA0-0008	28	3429	3883	4311					19	2419	2739	3041	VM ON-28W / 00:00-19W / 06:00-28W
VMA10DA0-0009	19	2419	2739	3041					10	1269	1437	1595	VM ON-19W / 00:00-10W / 06:00-19W
VMA10DA0-0010	19	2419	2739	3041					13	1678	1900	2110	VM ON-19W / 00:00-13W / 06:00-19W
VMA10DA0-0011	14	1861	2107	2340					8	972	1100	1221	VM ON-14W / 00:00-8W / 06:00-14W
VMA10DA0-0012	14	1861	2107	2340					10	1269	1437	1595	VM ON-14W / 00:00-10W / 06:00-14W
<b>LUMEN PACKAGE 2L</b>													
VMA10BA0-0013	15	1694	1918	2130	10	1195	1353	1502	8	919	1041	1156	VM ON-15W / 21:00-10W / 24:00-8W / 04:00-10W/06:00-15W
VMA10BA0-0014	10	1195	1353	1502	7	829	939	1042	5	627	710	788	VM ON-10W / 21:00-7W / 24:00-5W / 04:00-7W /06:00-10W
VMA10BA0-0015	8	919	1041	1156	5	627	710	788	4	480	543	603	VM ON-8W / 21:00-5W / 24:00-4W / 04:00-5W /06:00-8W
VMA10BA0-0001	15	1694	1918	2130					8	919	1041	1156	VM ON-15W / 22:00-8W / 06:00-15W
VMA10BA0-0002	15	1694	1918	2130					10	1195	1353	1502	VM ON-15W / 22:00-10W / 06:00-15W
VMA10BA0-0003	10	1195	1353	1502					5	627	710	788	VM ON-10W / 22:00-5W / 06:00-10W
VMA10BA0-0004	10	1195	1353	1502					7	829	939	1042	VM ON-10W / 22:00-7W / 06:00-10W
VMA10BA0-0005	8	919	1041	1156					4	480	543	603	VM ON-8W / 22:00-4W / 06:00-7W
VMA10BA0-0006	8	919	1041	1156					5	627	710	788	VM ON-8W / 22:00-5W / 06:00-7W
VMA10BA0-0007	15	1694	1918	2130					8	919	1041	1156	VM ON-15W / 00:00-8W / 06:00-15W
VMA10BA0-0008	15	1694	1918	2130					10	1195	1353	1502	VM ON-15W / 00:00-10W / 06:00-15W
VMA10BA0-0009	10	1195	1353	1502					5	627	710	788	VM ON-10W / 00:00-5W / 06:00-10W
VMA10BA0-0010	10	1195	1353	1502					7	829	939	1042	VM ON-10W / 00:00-7W / 06:00-10W
VMA10BA0-0011	8	919	1041	1156					4	480	543	603	VM ON-8W / 00:00-4W / 06:00-7W
VMA10BA0-0012	8	919	1041	1156					5	627	710	788	VM ON-8W / 00:00-5W / 06:00-7W

## Control options - Variant S - N (Optics K07 - K10 - K12 075 - 100 - 125 - 200 - AFN - ARS)

DL (DALI DIMMABLE)						
Lumen Package	Setting Code	System Watts W	Nominal flux (lm)			Description
			2700K	3000K	4000K	
8L	DLE10HA0-0001	54	6872	7782	8640	DALI MAX 54W
6L	DLE10FA0-0001	41	5220	5911	6562	DALI MAX 41W
4L	DLE10DA0-0001	28	3429	3883	4311	DALI MAX 28W
2L	DLE10BA0-0001	15	1694	1918	2130	DALI MAX 15W

CL*	
Setting Code	Description
CL####-****	CLO 50.000 HOURS START AT 90%
CL####-****	CLO 100.000 HOURS START AT 80%

\*Standard CLO to be matched to programme powers for FX option for S-N variants, please for information contact Cree Lighting Europe.

VMC*	
Setting Code	Description
VMC####-****	CLO 50.000 HOURS START AT 90%
VMC####-****	CLO 100.000 HOURS START AT 80%

\*Standard CLO to be matched to the wattage of the VM option programmes for S-N variants, please for information contact Cree Lighting Europe.

## Control options - Variant Z (Optics K07 - K10 - K12 - 075 - 100 - 125 - 200 - AFN - ARS)

FX - FIXED OUTPUT					
Setting Code	System Watts W	Nominal flux (lm)			Description
		2700K	3000K	4000K	
<b>LUMEN PACKAGE 8L</b>					
FXP10HA0-0001	54	6872	7782	8640	FIXED OUTPUT 54W
FXP10HA0-0002	36	4847	5489	6094	FIXED OUTPUT 36W
FXP10HA0-0003	27	3729	4223	4689	FIXED OUTPUT 27W
<b>LUMEN PACKAGE 6L</b>					
FXP10FA0-0001	41	5220	5911	6562	FIXED OUTPUT 41W
FXP10FA0-0002	27	3682	4169	4629	FIXED OUTPUT 27W
FXP10FA0-0003	21	2833	3208	3561	FIXED OUTPUT 21W
<b>LUMEN PACKAGE 4L</b>					
FXP10DA0-0001	28	3429	3883	4311	FIXED OUTPUT 28W
FXP10DA0-0002	19	2419	2739	3041	FIXED OUTPUT 19W
FXP10DA0-0003	14	1861	2107	2340	FIXED OUTPUT 14W
<b>LUMEN PACKAGE 2L</b>					
FXP102B0-0001	15	1694	1918	2130	FIXED OUTPUT 15W
FXP102B0-0002	10	1195	1353	1502	FIXED OUTPUT 10W
FXP102B0-0003	8	919	1041	1156	FIXED OUTPUT 8W

VM - VIRTUAL MIDNIGHT (Lumen package 8L - 6L)													
Setting Code	W Max	Nominal flux (lm)			W Med	Nominal flux (lm)			W Min	Nominal flux (lm)			Description
		2700K	3000K	4000K		2700K	3000K	4000K		2700K	3000K	4000K	
<b>LUMEN PACKAGE 8L</b>													
VMP10HA0-0013	54	6872	7782	8640	36	4847	5178	6094	27	3729	4223	4689	VM ON-54W / 21:00-36W / 24:00-27W / 04:00-36W/06:00-54W
VMP10HA0-0014	36	4847	5489	6094	24	3363	3592	4228	19	2543	2879	3197	VM ON-36W / 21:00-24W / 24:00-19W / 04:00-24W/06:00-36W
VMP10HA0-0015	27	3729	4223	4689	19	2543	2716	3197	15	1947	2205	2448	VM ON-27W / 21:00-19W / 24:00-15W / 04:00-19W/06:00-27W
VMP10HA0-0001	54	6872	7782	8640					27	3729	4223	4689	VM ON-54W / 22:00-27W / 06:00-54W
VMP10HA0-0002	54	6872	7782	8640					36	4847	5489	6094	VM ON-54W / 22:00-36W / 06:00-54W
VMP10HA0-0003	36	4847	5489	6094					19	2543	2879	3197	VM ON-36W / 22:00-19W / 06:00-36W
VMP10HA0-0004	36	4847	5489	6094					24	3363	3808	4228	VM ON-36W / 22:00-24W / 06:00-36W
VMP10HA0-0005	27	3729	4223	4689					15	1947	2205	2448	VM ON-27W / 22:00-15W / 06:00-27W
VMP10HA0-0006	27	3729	4223	4689					19	2543	2879	3197	VM ON-27W / 22:00-19W / 06:00-27W
VMP10HA0-0007	54	6872	7782	8640					27	3729	4223	4689	VM ON-54W / 00:00-27W / 06:00-54W
VMP10HA0-0008	54	6872	7782	8640					36	4847	5489	6094	VM ON-54W / 00:00-36W / 06:00-54W
VMP10HA0-0009	36	4847	5489	6094					19	2543	2879	3197	VM ON-36W / 00:00-19W / 06:00-36W
VMP10HA0-0010	36	4847	5489	6094					24	3363	3808	4228	VM ON-36W / 00:00-24W / 06:00-36W
VMP10HA0-0011	27	3729	4223	4689					15	1947	2205	2448	VM ON-27W / 00:00-15W / 06:00-27W
VMP10HA0-0012	27	3729	4223	4689					19	2543	2879	3197	VM ON-27W / 00:00-19W / 06:00-27W
<b>LUMEN PACKAGE 6L</b>													
VMP10FA0-0013	41	5220	5911	6562					21	2833	3208	3561	VM ON-41W / 21:00-27W / 24:00-21W / 04:00-27W/06:00-41W
VMP10FA0-0014	27	3682	4169	4629	27	3682	4169	4629	14	1931	2187	2428	VM ON-27W / 21:00-19W / 24:00-14W / 04:00-19W/06:00-27W
VMP10FA0-0015	21	2833	3208	3561	19	2554	2892	3211	11	1479	1675	1859	VM ON-21W / 21:00-14W / 24:00-11W / 04:00-14W/06:00-21W
VMP10FA0-0001	41	5220	5220	6562	14	1931	2187	2428	21	2833	3208	3561	VM ON-41W / 22:00-21W / 06:00-41W
VMP10FA0-0002	41	5220	5220	6562					27	3682	3682	4629	VM ON-41W / 22:00-27W / 06:00-41W
VMP10FA0-0003	27	3682	4169	4629					14	1931	2187	2428	VM ON-27W / 22:00-14W / 06:00-27W
VMP10FA0-0004	27	3682	4169	4629					19	2554	2892	3211	VM ON-27W / 22:00-19W / 06:00-27W
VMP10FA0-0005	21	2833	3208	3561					11	1479	1675	1859	VM ON-21W / 22:00-11W / 06:00-21W
VMP10FA0-0006	21	2833	3208	3561					14	1931	1931	2428	VM ON-21W / 22:00-14W / 06:00-21W
VMP10FA0-0007	41	5220	5220	6562					21	2833	3208	3561	VM ON-41W / 00:00-21W / 06:00-41W
VMP10FA0-0008	41	5220	5220	6562					27	3682	4169	4629	VM ON-41W / 00:00-27W / 06:00-41W
VMP10FA0-0009	27	3682	4169	4629					14	1931	2187	2428	VM ON-27W / 00:00-14W / 06:00-27W
VMP10FA0-0010	27	3682	4169	4629					19	2554	2892	3211	VM ON-27W / 00:00-19W / 06:00-27W
VMP10FA0-0011	21	2833	2833	3561					11	1479	1675	1859	VM ON-21W / 00:00-11W / 06:00-21W
VMP10FA0-0012	21	2833	2833	3561					14	1931	2187	2428	VM ON-21W / 00:00-14W / 06:00-21W

## Control options - Variant Z (Optics K07 - K10 - K12 - 075 - 100 - 125 - 200 - AFN - ARS)

VM - VIRTUAL MIDNIGHT (Lumen package 4L - 2L)													
Setting Code	W Max	Nominal flux (lm)			W Med	Nominal flux (lm)			W Min	Nominal flux (lm)			Description
		2700K	3000K	4000K		2700K	3000K	4000K		2700K	3000K	4000K	
<b>LUMEN PACKAGE 4L</b>													
VMP10DA0-0013	28	3429	3883	4311	19	2419	2739	3041	14	1861	2107	2340	VM ON-28W / 21:00-19W / 24:00-14W / 04:00-19W/06:00-28W
VMP10DA0-0014	19	2419	2739	3041	13	1678	1900	2110	10	1269	1437	1595	VM ON-19W / 21:00-13W / 24:00-10W / 04:00-13W/06:00-19W
VMP10DA0-0015	14	1861	2107	2340	10	1269	1437	1595	8	972	1100	1221	VM ON-14 / 21:00-10W / 24:00-8W / 04:00-10W/06:00-14W
VMP10DA0-0001	28	3429	3883	4311					14	1861	2107	2340	VM ON-28W / 22:00-14W / 06:00-28W
VMP10DA0-0002	28	3429	3883	4311					19	2419	2739	3041	VM ON-28W / 22:00-19W / 06:00-28W
VMP10DA0-0003	19	2419	2739	3041					10	1269	1437	1595	VM ON-19W / 22:00-10W / 06:00-19W
VMP10DA0-0004	19	2419	2739	3041					13	1678	1900	2110	VM ON-19W / 22:00-13W / 06:00-19W
VMP10DA0-0005	14	1861	2107	2340					8	972	1100	1221	VM ON-14W / 22:00-8W / 06:00-14W
VMP10DA0-0006	14	1861	2107	2340					10	1269	1437	1595	VM ON-14W / 22:00-10W / 06:00-14W
VMP10DA0-0007	28	3429	3883	4311					14	1861	2107	2340	VM ON-28W / 00:00-14W / 06:00-28W
VMP10DA0-0008	28	3429	3883	4311					19	2419	2739	3041	VM ON-28W / 00:00-19W / 06:00-28W
VMP10DA0-0009	19	2419	2739	3041					10	1269	1437	1595	VM ON-19W / 00:00-10W / 06:00-19W
VMP10DA0-0010	19	2419	2739	3041					13	1678	1900	2110	VM ON-19W / 00:00-13W / 06:00-19W
VMP10DA0-0011	14	1861	2107	2340					8	972	1100	1221	VM ON-14W / 00:00-8W / 06:00-14W
VMP10DA0-0012	14	1861	2107	2340					10	1269	1437	1595	VM ON-14W / 00:00-10W / 06:00-14W
<b>LUMEN PACKAGE 2L</b>													
VMP10BA0-0013	15	1694	1918	2130	10	1195	1353	1502	8	919	1041	1156	VM ON-15W / 21:00-10W / 24:00-8W / 04:00-10W/06:00-15W
VMP10BA0-0014	10	1195	1353	1502	7	829	939	1042	5	627	710	788	VM ON-10W / 21:00-7W / 24:00-5W / 04:00-7W /06:00-10W
VMP10BA0-0015	8	919	1041	1156	5	627	710	788	4	480	543	603	VM ON-8W / 21:00-5W / 24:00-4W / 04:00-5W /06:00-8W
VMP10BA0-0001	15	1694	1918	2130					8	919	1041	1156	VM ON-15W / 22:00-8W / 06:00-15W
VMP10BA0-0002	15	1694	1918	2130					10	1195	1353	1502	VM ON-15W / 22:00-10W / 06:00-15W
VMP10BA0-0003	10	1195	1353	1502					5	627	710	788	VM ON-10W / 22:00-5W / 06:00-10W
VMP10BA0-0004	10	1195	1353	1502					7	829	939	1042	VM ON-10W / 22:00-7W / 06:00-10W
VMP10BA0-0005	8	919	1041	1156					4	480	543	603	VM ON-8W / 22:00-4W / 06:00-7W
VMP10BA0-0006	8	919	1041	1156					5	627	710	788	VM ON-8W / 22:00-5W / 06:00-7W
VMP10BA0-0007	15	1694	1918	2130					8	919	1041	1156	VM ON-15W / 00:00-8W / 06:00-15W
VMP10BA0-0008	15	1694	1918	2130					10	1195	1353	1502	VM ON-15W / 00:00-10W / 06:00-15W
VMP10BA0-0009	10	1195	1353	1502					5	627	710	788	VM ON-10W / 00:00-5W / 06:00-10W
VMP10BA0-0010	10	1195	1353	1502					7	829	939	1042	VM ON-10W / 00:00-7W / 06:00-10W
VMP10BA0-0011	8	919	1041	1156					4	480	543	603	VM ON-8W / 00:00-4W / 06:00-7W
VMP10BA0-0012	8	919	1041	1156					5	627	710	788	VM ON-8W / 00:00-5W / 06:00-7W

CL*	
Setting Code	Description
CL###-****	CLO 50.000 HOURS START AT 90%
CL###-****	CLO 100.000 HOURS START AT 80%

\*Standard CLO to be matched to programme powers for FX option for S-N variants, please for information contact Cree Lighting Europe.

VMC*	
Setting Code	Description
VMC###-****	CLO 50.000 HOURS START AT 90%
VMC###-****	CLO 100.000 HOURS START AT 80%

\*Standard CLO to be matched to the wattage of the VM option programmes for S-N variants, please for information contact Cree Lighting Europe.



## Control options - Variant S-N (Optics 150 - SCP - PCL - PCR)

FX - FIXED OUTPUT					
Setting Code	System Watts W	Nominal flux (lm)			Description
		2700K	3000K	4000K	
<b>LUMEN PACKAGE 8L</b>					
FXA10HA0-00001	54	7186	7341	8640	FIXED OUTPUT 54W
FXA10HA0-00002	36	5068	5178	6094	FIXED OUTPUT 36W
FXA10HA0-00003	27	3899	3984	4689	FIXED OUTPUT 27W
<b>LUMEN PACKAGE 6L</b>					
FXA10FA0-00001	41	5458	5576	6562	FIXED OUTPUT 41W
FXA10FA0-00002	27	3850	3933	4629	FIXED OUTPUT 27W
FXA10FA0-00003	21	2962	3026	3561	FIXED OUTPUT 21W
<b>LUMEN PACKAGE 4L</b>					
FXA10DA0-00001	28	3585	3663	4311	FIXED OUTPUT 28W
FXA10DA0-00002	19	2529	2583	3041	FIXED OUTPUT 19W
FXA10DA0-00003	14	1946	1988	2340	FIXED OUTPUT 14W
<b>LUMEN PACKAGE 2L</b>					
FXA10BA0-00001	15	1771	1809	2130	FIXED OUTPUT 15W
FXA10BA0-00002	10	1249	1276	1502	FIXED OUTPUT 10W
FXA10BA0-00003	8	961	982	1156	FIXED OUTPUT 8W

VM - VIRTUAL MIDNIGHT (Lumen package 8L - 6L)													
Setting Code	W Max	Nominal flux (lm)			W Med	Nominal flux (lm)			W Min	Nominal flux (lm)			Description
		2700K	3000K	4000K		2700K	3000K	4000K		2700K	3000K	4000K	
<b>LUMEN PACKAGE 8L</b>													
VMA10HA0-0013	54	7186	7341	8640	36	5068	5178	6094	27	3899	3984	4689	VM ON-54W / 21:00-36W / 24:00-27W / 04:00-36W/06:00-54W
VMA10HA0-0014	36	5068	5178	6094	24	3516	3592	4228	19	2659	2716	3197	VM ON-36W / 21:00-24W / 24:00-19W /04:00-24W/06:00- 36W
VMA10HA0-0015	27	3899	3984	4689	19	2659	2716	3197	15	2036	2080	2448	VM ON-27W / 21:00-19W / 24:00-15W / 04:00-19W/06:00-27W
VMA10HA0-0001	54	7186	7341	8640					27	3899	3984	4689	VM ON-54W / 22:00-27W / 06:00-54W
VMA10HA0-0002	54	7186	7341	8640					36	5068	5178	6094	VM ON-54W / 22:00-36W / 06:00-54W
VMA10HA0-0003	36	5068	5178	6094					19	2659	2716	3197	VM ON-36W / 22:00-19W / 06:00-36W
VMA10HA0-0004	36	5068	5178	6094					24	3516	3592	4228	VM ON-36W / 22:00-24W / 06:00-36W
VMA10HA0-0005	27	3899	3984	4689					15	2036	2080	2448	VM ON-27W / 22:00-15W / 06:00-27W
VMA10HA0-0006	27	3899	3984	4689					19	2659	2716	3197	VM ON-27W / 22:00-19W / 06:00-27W
VMA10HA0-0007	54	7186	7341	8640					27	3899	3984	4689	VM ON-54W / 00:00-27W / 06:00-54W
VMA10HA0-0008	54	7186	7341	8640					36	5068	5178	6094	VM ON-54W / 00:00-36W / 06:00-54W
VMA10HA0-0009	36	5068	5178	6094					19	2659	2716	3197	VM ON-36W / 00:00-19W / 06:00-36W
VMA10HA0-0010	36	5068	5178	6094					24	3516	3592	4228	VM ON-36W / 00:00-24W / 06:00-36W
VMA10HA0-0011	27	3899	3984	4689					15	2036	2080	2448	VM ON-27W / 00:00-15W / 06:00-27W
VMA10HA0-0012	27	3899	3984	4689					19	2659	2716	3197	VM ON-27W / 00:00-19W / 06:00-27W
<b>LUMEN PACKAGE 6L</b>													
VMA10FA0-0013	41	5458	5576	6562					21	2962	3026	3561	VM ON-41W / 21:00-27W / 24:00-21W /04:00-27W/06:00- 41W
VMA10FA0-0014	27	3850	3933	4629	27	3850	3933	4629	14	2019	2063	2428	VM ON-27W / 21:00-19W / 24:00-14W /04:00-19W/06:00-27W
VMA10FA0-0015	21	2962	3026	3561	19	2671	2728	3211	11	1546	1580	1859	VM ON-21W / 21:00-14W / 24:00-11W /04:00-14W/06:00-21W
VMA10FA0-0001	41	5458	5576	6562	14	2019	2063	2428	21	2962	3026	3561	VM ON-41W / 22:00-21W / 06:00-41W
VMA10FA0-0002	41	5458	5576	6562					27	3850	3933	4629	VM ON-41W / 22:00-27W / 06:00-41W
VMA10FA0-0003	27	3850	3933	4629					14	2019	2063	2428	VM ON-27W / 22:00-14W / 06:00-27W
VMA10FA0-0004	27	3850	3933	4629					19	2671	2728	3211	VM ON-27W / 22:00-19W / 06:00-27W
VMA10FA0-0005	21	2962	3026	3561					11	1546	1580	1859	VM ON-21W / 22:00-11W / 06:00-21W
VMA10FA0-0006	21	2962	3026	3561					14	2019	2063	2428	VM ON-21W / 22:00-14W / 06:00-21W
VMA10FA0-0007	41	5458	5576	6562					21	2962	3026	3561	VM ON-41W / 00:00-21W / 06:00-41W
VMA10FA0-0008	41	5458	5576	6562					27	3850	3933	4629	VM ON-41W / 00:00-27W / 06:00-41W
VMA10FA0-0009	27	3850	3933	4629					14	2019	2063	2428	VM ON-27W / 00:00-14W / 06:00-27W
VMA10FA0-0010	27	3850	3933	4629					19	2671	2728	3211	VM ON-27W / 00:00-19W / 06:00-27W
VMA10FA0-0011	21	2962	3026	3561					11	1546	1580	1859	VM ON-21W / 00:00-11W / 06:00-21W
VMA10FA0-0012	21	2962	3026	3561					14	2019	2063	2428	VM ON-21W / 00:00-14W / 06:00-21W



## Control options - Variant S-N (Optics 150 - SCP - PCL - PCR)

VM - VIRTUAL MIDNIGHT (Lumen package 4L - 2L)													
Setting Code	W Max	Nominal flux (lm)			W Med	Nominal flux (lm)			W Min	Nominal flux (lm)			Description
		2700K	3000K	4000K		2700K	3000K	4000K		2700K	3000K	4000K	
<b>LUMEN PACKAGE 4L</b>													
VMA10DA0-0013	28	3585	3663	4311	19	2529	2583	3041	14	1946	1988	2340	VM ON-28W / 21:00-19W / 24:00-14W / 04:00-19W/06:00-28W
VMA10DA0-0014	19	2529	2583	3041	13	1754	1792	2110	10	1327	1355	1595	VM ON-19W / 21:00-13W / 24:00-10W / 04:00-13W/06:00-19W
VMA10DA0-0015	14	1946	1988	2340	10	1327	1355	1595	8	1016	1038	1221	VM ON-14 / 21:00-10W / 24:00-8W / 04:00-10W/06:00-14W
VMA10DA0-0001	28	3585	3663	4311					14	1946	1988	2340	VM ON-28W / 22:00-14W / 06:00-28W
VMA10DA0-0002	28	3585	3663	4311					19	2529	2583	3041	VM ON-28W / 22:00-19W / 06:00-28W
VMA10DA0-0003	19	2529	2583	3041					10	1327	1355	1595	VM ON-19W / 22:00-10W / 06:00-19W
VMA10DA0-0004	19	2529	2583	3041					13	1754	1792	2110	VM ON-19W / 22:00-13W / 06:00-19W
VMA10DA0-0005	14	1946	1988	2340					8	1016	1038	1221	VM ON-14W / 22:00-8W / 06:00-14W
VMA10DA0-0006	14	1946	1988	2340					10	1327	1355	1595	VM ON-14W / 22:00-10W / 06:00-14W
VMA10DA0-0007	28	3585	3663	4311					14	1946	1988	2340	VM ON-28W / 00:00-14W / 06:00-28W
VMA10DA0-0008	28	3585	3663	4311					19	2529	2583	3041	VM ON-28W / 00:00-19W / 06:00-28W
VMA10DA0-0009	19	2529	2583	3041					10	1327	1355	1595	VM ON-19W / 00:00-10W / 06:00-19W
VMA10DA0-0010	19	2529	2583	3041					13	1754	1792	2110	VM ON-19W / 00:00-13W / 06:00-19W
VMA10DA0-0011	14	1946	1988	2340					8	1016	1038	1221	VM ON-14W / 00:00-8W / 06:00-14W
VMA10DA0-0012	14	1946	1988	2340					10	1327	1355	1595	VM ON-14W / 00:00-10W / 06:00-14W
<b>LUMEN PACKAGE 2L</b>													
VMA10BA0-0013	15	1771	1809	2130	10	1249	1276	1502	8	961	982	1156	VM ON-15W / 21:00-10W / 24:00-8W / 04:00-10W/06:00-15W
VMA10BA0-0014	10	1249	1276	1502	7	867	885	1042	5	655	669	788	VM ON-10W / 21:00-7W / 24:00-5W / 04:00-7W /06:00-10W
VMA10BA0-0015	8	961	982	1156	5	655	669	788	4	502	513	603	VM ON-8W / 21:00-5W / 24:00-4W / 04:00-5W /06:00-8W
VMA10BA0-0001	15	1771	1809	2130					8	961	982	1156	VM ON-15W / 22:00-8W / 06:00-15W
VMA10BA0-0002	15	1771	1809	2130					10	1249	1276	1502	VM ON-15W / 22:00-10W / 06:00-15W
VMA10BA0-0003	10	1249	1276	1502					5	655	669	788	VM ON-10W / 22:00-5W / 06:00-10W
VMA10BA0-0004	10	1249	1276	1502					7	867	885	1042	VM ON-10W / 22:00-7W / 06:00-10W
VMA10BA0-0005	8	961	982	1156					4	502	513	603	VM ON-8W / 22:00-4W / 06:00-7W
VMA10BA0-0006	8	961	982	1156					5	655	669	788	VM ON-8W / 22:00-5W / 06:00-7W
VMA10BA0-0007	15	1771	1809	2130					8	961	982	1156	VM ON-15W / 00:00-8W / 06:00-15W
VMA10BA0-0008	15	1771	1809	2130					10	1249	1276	1502	VM ON-15W / 00:00-10W / 06:00-15W
VMA10BA0-0009	10	1249	1276	1502					5	655	669	788	VM ON-10W / 00:00-5W / 06:00-10W
VMA10BA0-0010	10	1249	1276	1502					7	867	885	1042	VM ON-10W / 00:00-7W / 06:00-10W
VMA10BA0-0011	8	961	982	1156					4	502	513	603	VM ON-8W / 00:00-4W / 06:00-7W
VMA10BA0-0012	8	961	982	1156					5	655	669	788	VM ON-8W / 00:00-5W / 06:00-7W

## Control options - Variant S-N (Optics 150 - SCP - PCL - PCR)

DL - DALI DIMMABLE						
Lumen Package	System Watts W	Nominal flux (lm)	Description			Description
			2700K	3000K	4000K	
8L	DLE10HA0-0001	54	7186	7341	8640	DALI MAX 54W
6L	DLE10FA0-0001	41	5458	5576	6562	DALI MAX 41W
4L	DLE10DA0-0001	28	3585	3663	4311	DALI MAX 28W
2L	DLE10BA0-0001	15	1771	1809	2130	DALI MAX 15W

CL*	
Setting Code	Description
CL###-****	CLO 50.000 HOURS START AT 90%
CL###-****	CLO 100.000 HOURS START AT 80%

\*Standard CLO to be matched to programme powers for FX option for S-N variants, please for information contact Cree Lighting Europe.

VMC*	
Setting Code	Description
VMC###-****	CLO 50.000 HOURS START AT 90%
VMC###-****	CLO 100.000 HOURS START AT 80%

\*Standard CLO to be matched to the wattage of the VM option programmes for S-N variants, please for information contact Cree Lighting Europe.

## Control options - Variant Z (Optics 150 - SCP - PCL - PCR)

FX - FIXED OUTPUT					
Setting Code	System Watts W	Nominal flux (lm)			Description
		2700K	3000K	4000K	
<b>LUMEN PACKAGE 8L</b>					
FXP10HA0-0001	54	7186	7341	8640	FIXED OUTPUT 54W
FXP10HA0-0002	36	5068	5178	6094	FIXED OUTPUT 36W
FXP10HA0-0003	27	3899	3984	4689	FIXED OUTPUT 27W
<b>LUMEN PACKAGE 6L</b>					
FXP10FA0-0001	41	5458	5576	6562	FIXED OUTPUT 41W
FXP10FA0-0002	27	3850	3933	4629	FIXED OUTPUT 27W
FXP10FA0-0003	21	2962	3026	3561	FIXED OUTPUT 21W
<b>LUMEN PACKAGE 4L</b>					
FXP10DA0-0001	28	3585	3663	4311	FIXED OUTPUT 28W
FXP10DA0-0002	19	2529	2583	3041	FIXED OUTPUT 19W
FXP10DA0-0003	14	1946	1988	2340	FIXED OUTPUT 14W
<b>LUMEN PACKAGE 2L</b>					
FXP102B0-0001	15	1771	1809	2130	FIXED OUTPUT 15W
FXP102B0-0002	10	1249	1276	1502	FIXED OUTPUT 10W
FXP102B0-0003	8	961	982	1156	FIXED OUTPUT 8W

VM - VIRTUAL MIDNIGHT (Lumen package 8L - 6L)													
Setting Code	W Max	Nominal flux (lm)			W Med	Nominal flux (lm)			W Min	Nominal flux (lm)			Description
		2700K	3000K	4000K		2700K	3000K	4000K		2700K	3000K	4000K	
<b>LUMEN PACKAGE 8L</b>													
VMP10HA0-0013	54	7186	7341	8640	36	5068	5178	6094	27	3899	3984	4689	VM ON-54W / 21:00-36W / 24:00-27W / 04:00-36W/06:00-54W
VMP10HA0-0014	36	5068	5178	6094	24	3516	3592	4228	19	2659	2716	3197	VM ON-36W / 21:00-24W / 24:00-19W /04:00-24W/06:00- 36W
VMP10HA0-0015	27	3899	3984	4689	19	2659	2716	3197	15	2036	2080	2448	VM ON-27W / 21:00-19W / 24:00-15W / 04:00-19W/06:00-27W
VMP10HA0-0001	54	7186	7341	8640					27	3899	3984	4689	VM ON-54W / 22:00-27W / 06:00-54W
VMP10HA0-0002	54	7186	7341	8640					36	5068	5178	6094	VM ON-54W / 22:00-36W / 06:00-54W
VMP10HA0-0003	36	5068	5178	6094					19	2659	2716	3197	VM ON-36W / 22:00-19W / 06:00-36W
VMP10HA0-0004	36	5068	5178	6094					24	3516	3592	4228	VM ON-36W / 22:00-24W / 06:00-36W
VMP10HA0-0005	27	3899	3984	4689					15	2036	2080	2448	VM ON-27W / 22:00-15W / 06:00-27W
VMP10HA0-0006	27	3899	3984	4689					19	2659	2716	3197	VM ON-27W / 22:00-19W / 06:00-27W
VMP10HA0-0007	54	7186	7341	8640					27	3899	3984	4689	VM ON-54W / 00:00-27W / 06:00-54W
VMP10HA0-0008	54	7186	7341	8640					36	5068	5178	6094	VM ON-54W / 00:00-36W / 06:00-54W
VMP10HA0-0009	36	5068	5178	6094					19	2659	2716	3197	VM ON-36W / 00:00-19W / 06:00-36W
VMP10HA0-0010	36	5068	5178	6094					24	3516	3592	4228	VM ON-36W / 00:00-24W / 06:00-36W
VMP10HA0-0011	27	3899	3984	4689					15	2036	2080	2448	VM ON-27W / 00:00-15W / 06:00-27W
VMP10HA0-0012	27	3899	3984	4689					19	2659	2716	3197	VM ON-27W / 00:00-19W / 06:00-27W
<b>LUMEN PACKAGE 6L</b>													
VMP10FA0-0013	41	5458	5576	6562					21	2962	3026	3561	VM ON-41W / 21:00-27W / 24:00-21W /04:00-27W/06:00- 41W
VMP10FA0-0014	27	3850	3933	4629	27	3850	3933	4629	14	2019	2063	2428	VM ON-27W / 21:00-19W / 24:00-14W /04:00-19W/06:00-27W
VMP10FA0-0015	21	2962	3026	3561	19	2671	2728	3211	11	1546	1580	1859	VM ON-21W / 21:00-14W / 24:00-11W /04:00-14W/06:00-21W
VMP10FA0-0001	41	5458	5576	6562	14	2019	2063	2428	21	2962	3026	3561	VM ON-41W / 22:00-21W / 06:00-41W
VMP10FA0-0002	41	5458	5576	6562					27	3850	3933	4629	VM ON-41W / 22:00-27W / 06:00-41W
VMP10FA0-0003	27	3850	3933	4629					14	2019	2063	2428	VM ON-27W / 22:00-14W / 06:00-27W
VMP10FA0-0004	27	3850	3933	4629					19	2671	2728	3211	VM ON-27W / 22:00-19W / 06:00-27W
VMP10FA0-0005	21	2962	3026	3561					11	1546	1580	1859	VM ON-21W / 22:00-11W / 06:00-21W
VMP10FA0-0006	21	2962	3026	3561					14	2019	2063	2428	VM ON-21W / 22:00-14W / 06:00-21W
VMP10FA0-0007	41	5458	5576	6562					21	2962	3026	3561	VM ON-41W / 00:00-21W / 06:00-41W
VMP10FA0-0008	41	5458	5576	6562					27	3850	3933	4629	VM ON-41W / 00:00-27W / 06:00-41W
VMP10FA0-0009	27	3850	3933	4629					14	2019	2063	2428	VM ON-27W / 00:00-14W / 06:00-27W
VMP10FA0-0010	27	3850	3933	4629					19	2671	2728	3211	VM ON-27W / 00:00-19W / 06:00-27W
VMP10FA0-0011	21	2962	3026	3561					11	1546	1580	1859	VM ON-21W / 00:00-11W / 06:00-21W
VMP10FA0-0012	21	2962	3026	3561					14	2019	2063	2428	VM ON-21W / 00:00-14W / 06:00-21W

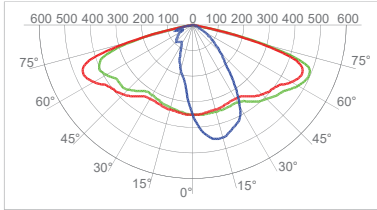
## Control options - Variant Z (Optics 150 - SCP - PCL - PCR)

VM - VIRTUAL MIDNIGHT (Lumen package 4L - 2L)													
Setting Code	W Max	Nominal flux (lm)			W Med	Nominal flux (lm)			W Min	Nominal flux (lm)			Description
		2700K	3000K	4000K		2700K	3000K	4000K		2700K	3000K	4000K	
<b>LUMEN PACKAGE 4L</b>													
VMP10DA0-0013	28	3585	3663	4311	19	2529	2583	3041	14	1946	1988	2340	VM ON-28W / 21:00-19W / 24:00-14W / 04:00-19W/06:00-28W
VMP10DA0-0014	19	2529	2583	3041	13	1754	1792	2110	10	1327	1355	1595	VM ON-19W / 21:00-13W / 24:00-10W / 04:00-13W/06:00-19W
VMP10DA0-0015	14	1946	1988	2340	10	1327	1355	1595	8	1016	1038	1221	VM ON-14 / 21:00-10W / 24:00-8W / 04:00-10W/06:00-14W
VMP10DA0-0001	28	3585	3663	4311					14	1946	1988	2340	VM ON-28W / 22:00-14W / 06:00-28W
VMP10DA0-0002	28	3585	3663	4311					19	2529	2583	3041	VM ON-28W / 22:00-19W / 06:00-28W
VMP10DA0-0003	19	2529	2583	3041					10	1327	1355	1595	VM ON-19W / 22:00-10W / 06:00-19W
VMP10DA0-0004	19	2529	2583	3041					13	1754	1792	2110	VM ON-19W / 22:00-13W / 06:00-19W
VMP10DA0-0005	14	1946	1988	2340					8	1016	1038	1221	VM ON-14W / 22:00-8W / 06:00-14W
VMP10DA0-0006	14	1946	1988	2340					10	1327	1355	1595	VM ON-14W / 22:00-10W / 06:00-14W
VMP10DA0-0007	28	3585	3663	4311					14	1946	1988	2340	VM ON-28W / 00:00-14W / 06:00-28W
VMP10DA0-0008	28	3585	3663	4311					19	2529	2583	3041	VM ON-28W / 00:00-19W / 06:00-28W
VMP10DA0-0009	19	2529	2583	3041					10	1327	1355	1595	VM ON-19W / 00:00-10W / 06:00-19W
VMP10DA0-0010	19	2529	2583	3041					13	1754	1792	2110	VM ON-19W / 00:00-13W / 06:00-19W
VMP10DA0-0011	14	1946	1988	2340					8	1016	1038	1221	VM ON-14W / 00:00-8W / 06:00-14W
VMP10DA0-0012	14	1946	1988	2340					10	1327	1355	1595	VM ON-14W / 00:00-10W / 06:00-14W
<b>LUMEN PACKAGE 2L</b>													
VMP10BA0-0013	15	1771	1809	2130	10	1249	1276	1502	8	961	982	1156	VM ON-15W / 21:00-10W / 24:00-8W / 04:00-10W/06:00-15W
VMP10BA0-0014	10	1249	1276	1502	7	867	885	1042	5	655	669	788	VM ON-10W / 21:00-7W / 24:00-5W / 04:00-7W /06:00-10W
VMP10BA0-0015	8	961	982	1156	5	655	669	788	4	502	513	603	VM ON-8W / 21:00-5W / 24:00-4W / 04:00-5W /06:00-8W
VMP10BA0-0001	15	1771	1809	2130					8	961	982	1156	VM ON-15W / 22:00-8W / 06:00-15W
VMP10BA0-0002	15	1771	1809	2130					10	1249	1276	1502	VM ON-15W / 22:00-10W / 06:00-15W
VMP10BA0-0003	10	1249	1276	1502					5	655	669	788	VM ON-10W / 22:00-5W / 06:00-10W
VMP10BA0-0004	10	1249	1276	1502					7	867	885	1042	VM ON-10W / 22:00-7W / 06:00-10W
VMP10BA0-0005	8	961	982	1156					4	502	513	603	VM ON-8W / 22:00-4W / 06:00-7W
VMP10BA0-0006	8	961	982	1156					5	655	669	788	VM ON-8W / 22:00-5W / 06:00-7W
VMP10BA0-0007	15	1771	1809	2130					8	961	982	1156	VM ON-15W / 00:00-8W / 06:00-15W
VMP10BA0-0008	15	1771	1809	2130					10	1249	1276	1502	VM ON-15W / 00:00-10W / 06:00-15W
VMP10BA0-0009	10	1249	1276	1502					5	655	669	788	VM ON-10W / 00:00-5W / 06:00-10W
VMP10BA0-0010	10	1249	1276	1502					7	867	885	1042	VM ON-10W / 00:00-7W / 06:00-10W
VMP10BA0-0011	8	961	982	1156					4	502	513	603	VM ON-8W / 00:00-4W / 06:00-7W
VMP10BA0-0012	8	961	982	1156					5	655	669	788	VM ON-8W / 00:00-5W / 06:00-7W

## Photometry

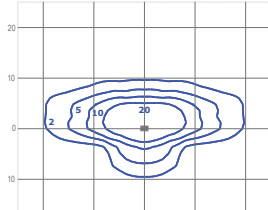
All published luminaire photometric testing performed by an external certified ISO 17025 laboratory.  
To obtain an IES file specific to your project consult: [www.creelighting-europe.com](http://www.creelighting-europe.com)

### 075 - Type II Short



cd/klm  
C0 - C180 C90 - C270 C2.5 - C182.5

Test Report #: 1088-QL20-R18

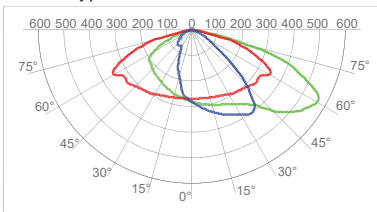


lux  
TRSA-2-075-8L-407  
Mounting Height: 6m

LUMEN OUTPUT - 075 (Type II Short)			
Lumen Package	2700K	3000K	4000K
	Initial Delivered Lumens*	Initial Delivered Lumens*	Initial Delivered Lumens*
2L	1450	1650	1850
4L	2950	3400	3750
6L	4550	5150	5700
8L	5950	6800	7516

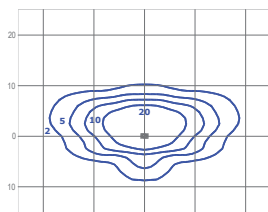
\* Initial delivered lumens at 25°C (77°F). Actual production yield may vary between -4 and +10% of initial delivered lumens

### 100 - Type II Short



cd/klm  
C0 - C180 C90 - C270 C20 - C200

Test Report #: 1088-QL20-R12

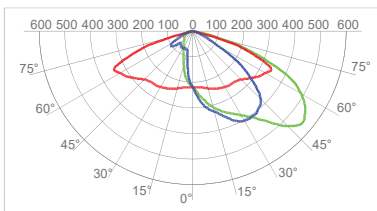


lux  
TRSA-2-100-8L-407  
Mounting Height: 6m

LUMEN OUTPUT - 100 (Type II Short)			
Lumen Package	2700K	3000K	4000K
	Initial Delivered Lumens*	Initial Delivered Lumens*	Initial Delivered Lumens*
2L	1400	1600	1800
4L	2900	3300	3650
6L	4400	5000	5550
8L	5820	6590	7317

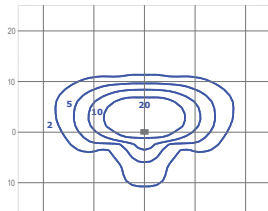
\* Initial delivered lumens at 25°C (77°F). Actual production yield may vary between -4 and +10% of initial delivered lumens

### 125 - Type II Short



cd/klm  
C0 - C180 C90 - C270 C35 - C215

Test Report #: 1088-QL20-R19

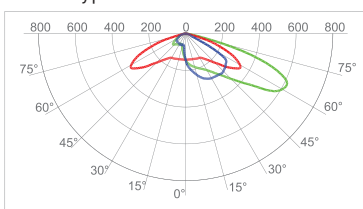


lux  
TRSA-2-125-8L-407  
Mounting Height: 6m

LUMEN OUTPUT - 125 (Type II Short)			
Lumen Package	2700K	3000K	4000K
	Initial Delivered Lumens*	Initial Delivered Lumens*	Initial Delivered Lumens*
2L	1450	1650	1850
4L	2950	3400	3750
6L	4550	5150	5700
8L	5950	6800	7475

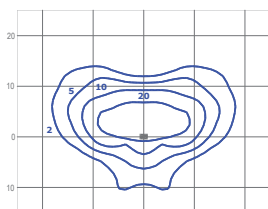
\* Initial delivered lumens at 25°C (77°F). Actual production yield may vary between -4 and +10% of initial delivered lumens

### 150 - Type III Short



cd/klm  
C0 - C180 C80 - C270 C27.5 - C207.5

Test Report #: 1088-QL21-S03



lux  
TRSA-2-150-8L-407  
Mounting Height: 6m

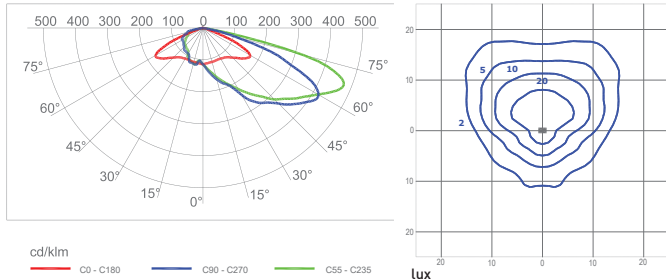
LUMEN OUTPUT - 150 (Type III Short)			
Lumen Package	2700K	3000K	4000K
	Initial Delivered Lumens*	Initial Delivered Lumens*	Initial Delivered Lumens*
2L	1590	1625	1912
4L	3219	3289	3871
6L	4901	5006	5893
8L	6452	6591	7758

\* Initial delivered lumens at 25°C (77°F). Actual production yield may vary between -4 and +10% of initial delivered lumens

## Photometry

All published luminaire photometric testing performed by an external certified ISO 17025 laboratory.  
To obtain an IES file specific to your project consult: [www.creelighting-europe.com](http://www.creelighting-europe.com)

### 200 - Type IV Short



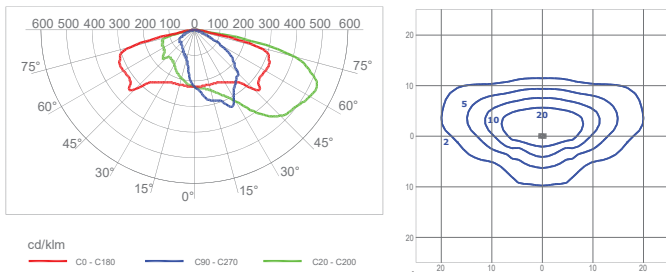
Test Report #: 1088-QL20-S05

TRSA-2-200-8L-407  
Mounting Height: 6m

LUMEN OUTPUT - 200 (Type IV Short)			
Lumen Package	2700K	3000K	4000K
	Initial Delivered Lumens*	Initial Delivered Lumens*	Initial Delivered Lumens*
2L	1439	1629	1809
4L	2913	3299	3662
6L	4435	5021	5575
8L	5838	6611	7340

\* Initial delivered lumens at 25°C (77°F). Actual production yield may vary between -4 and +10% of initial delivered lumens

### SCP - Type II Short



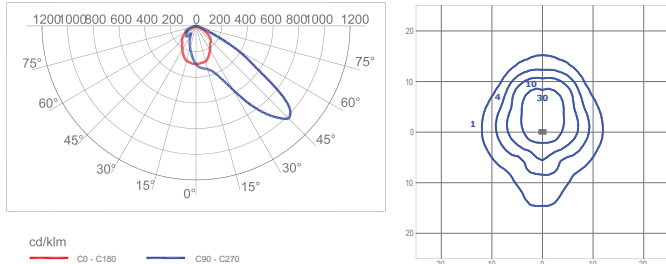
Test Report #: 1088-QL20-R15

TRSA-2-SCP-8L-407  
Mounting Height: 6m

LUMEN OUTPUT - SCP (Type II Short)			
Lumen Package	2700K	3000K	4000K
	Initial Delivered Lumens*	Initial Delivered Lumens*	Initial Delivered Lumens*
2L	1400	1600	1800
4L	2900	3300	3650
6L	4400	5000	5550
8L	5820	6590	7317

\* Initial delivered lumens at 25°C (77°F). Actual production yield may vary between -4 and +10% of initial delivered lumens

### AFN - Area Flood Narrow



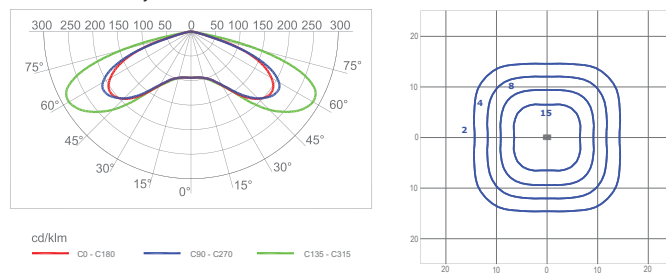
Test Report #: 1088-QL21-S04

TRSA-2-AFN-8L-407  
Mounting Height: 6m

LUMEN OUTPUT - AFN (Area Flood Narrow)			
Lumen Package	2700K	3000K	4000K
	Initial Delivered Lumens*	Initial Delivered Lumens*	Initial Delivered Lumens*
2L	1463	1656	1839
4L	2961	3353	3723
6L	4508	5104	5667
8L	5935	6720	7461

\* Initial delivered lumens at 25°C (77°F). Actual production yield may vary between -4 and +10% of initial delivered lumens

### ARS - Roto-Symmetric Area



Test Report #: 1088-QL21-S05

TRSA-2-ARS-8L-407  
Mounting Height: 6m

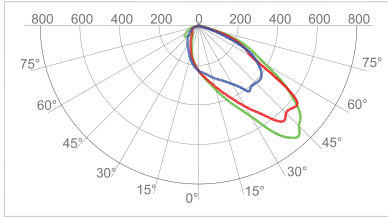
LUMEN OUTPUT - ARS (Roto-Symmetric Area)			
Lumen Package	2700K	3000K	4000K
	Initial Delivered Lumens*	Initial Delivered Lumens*	Initial Delivered Lumens*
2L	1475	1670	1854
4L	2986	3381	3754
6L	4546	5147	5715
8L	5985	6777	7524

\* Initial delivered lumens at 25°C (77°F). Actual production yield may vary between -4 and +10% of initial delivered lumens

## Photometry

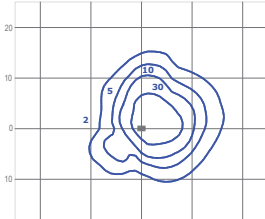
All published luminaire photometric testing performed by an external certified ISO 17025 laboratory.  
To obtain an IES file specific to your project consult: [www.creelighting-europe.com](http://www.creelighting-europe.com)

### PCR - Pedestrian Crossing Right



cd/klm  
C0 - C180 C90 - C270 C17.5 - C197.5

Test Report #: 1088-QL21-S03



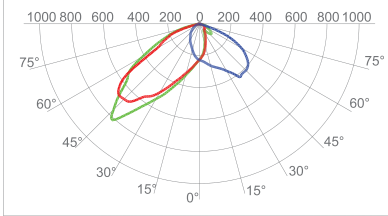
lux  
TRSA-2-PCR-8L-407  
Mounting Height: 6m

#### LUMEN OUTPUT - PCR (Pedestrian Crossing Right)

Lumen Package	2700K	3000K	4000K
	Initial Delivered Lumens*	Initial Delivered Lumens*	Initial Delivered Lumens*
2L	1622	1657	1951
4L	3285	3355	3949
6L	5000	5108	6012
8L	6583	6725	7915

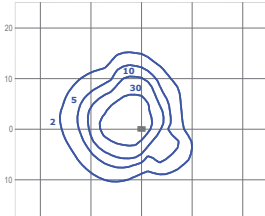
\* Initial delivered lumens at 25°C (77°F). Actual production yield may vary between -4 and +10% of initial delivered lumens

### PCL - Pedestrian Crossing Left



cd/klm  
C0 - C180 C90 - C270 C160 - C340

Test Report #: 1088-QL21-S04



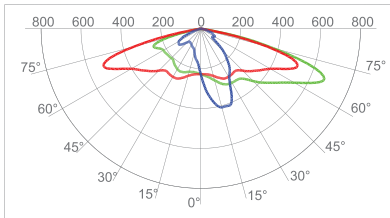
lux  
TRSA-2-PCL-8L-407  
Mounting Height: 6m

#### LUMEN OUTPUT - PCL (Pedestrian Crossing Left)

Lumen Package	2700K	3000K	4000K
	Initial Delivered Lumens*	Initial Delivered Lumens*	Initial Delivered Lumens*
2L	1633	1668	1963
4L	3305	3377	3974
6L	5031	5140	6050
8L	6624	6767	7965

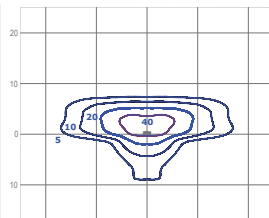
\* Initial delivered lumens at 25°C (77°F). Actual production yield may vary between -4 and +10% of initial delivered lumens

### K07 - Narrow Street



cd/klm  
C0 - C180 C90 - C270 C05 - C185

Test Report #: 1088-QL21-S05



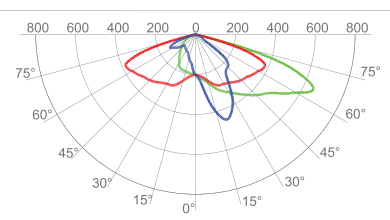
lux  
TRMA-2-K07-8L-407  
Mounting Height: 6m

#### LUMEN OUTPUT - K07 (Narrow Street)

Lumen Package	2700K	3000K	4000K
	Initial Delivered Lumens*	Initial Delivered Lumens*	Initial Delivered Lumens*
2L	1538	1742	1934
4L	3114	3526	3915
6L	4740	5367	5959
8L	6241	7067	7846

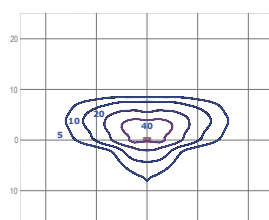
\* Initial delivered lumens at 25°C (77°F). Actual production yield may vary between -4 and +10% of initial delivered lumens

### K10 - Medium Street



cd/klm  
C0 - C180 C90 - C270 C20 - C200

Test Report #: 1088-QL21-S06



lux  
TRMA-2-K10-8L-407  
Mounting Height: 6m

#### LUMEN OUTPUT - K10 (Medium Street)

Lumen Package	2700K	3000K	4000K
	Initial Delivered Lumens*	Initial Delivered Lumens*	Initial Delivered Lumens*
2L	1540	1743	1936
4L	3117	3529	3918
6L	4745	5372	5965
8L	6247	7073	7853

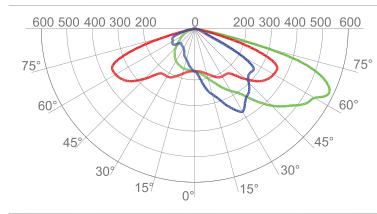
\* Initial delivered lumens at 25°C (77°F). Actual production yield may vary between -4 and +10% of initial delivered lumens



## Photometry

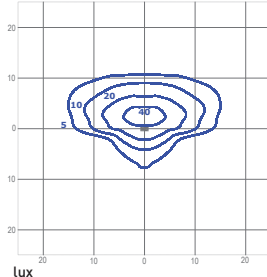
All published luminaire photometric testing performed by an external certified ISO 17025 laboratory.  
To obtain an IES file specific to your project consult: [www.creelighting-europe.com](http://www.creelighting-europe.com)

### K12 - Broad Street



cd/klm  
C0 - C180 C90 - C270 C20 - C200

Test Report #: 1088-QL21-S07



lux

TRMA-2-K12-8L-407  
Mounting Height: 6m

LUMEN OUTPUT - K12 (Broad Street)			
Lumen Package	2700K	3000K	4000K
	Initial Delivered Lumens*	Initial Delivered Lumens*	Initial Delivered Lumens*
2L	1507	1706	1895
4L	3051	3455	3836
6L	4644	5259	5839
8L	6114	6924	7687

\* Initial delivered lumens at 25°C (77°F). Actual production yield may vary between -4 and +10% of initial delivered lumens