

ITP Series

ITP - INTEGRATED TRIPROOF



CREE LIGHTING

Product Description

Designed from a single piece of polycarbonate, Cree Lighting's new integrated LED light is a reliable, robust and versatile fixture. Available in 3 sizes, the ITP series meets the mechanical requirements, IK08 and IP66, to allow installation in critical environments such as those exposed to high humidity and in general installations that require protection from external elements. An excellent solution for both new construction plants and for updating existing applications.

Applications: Warehouses, car parks, workshops, garages



Ordering Information

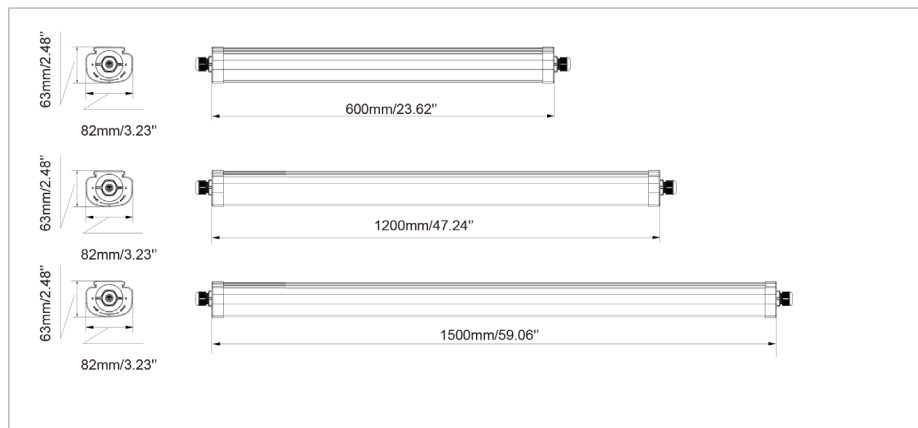
Example: ITP-A-CL-5L-308-24-FX

ITP	- A	- CL	- 5L	- 308	- 24	- FX
Product	Version	Mounting Options	Lumen Package	CCT	Voltage	Control Options
ITP Integrated Triproof	A	CL Ceiling Installation	3L* 18W 5L 36W 7L 50W	308 3000K 80CRI 408 4000K 80CRI 508* 5000K 80CRI	24 220-240V	FX ON-OFF SS* With Sensor On-Off DL DALI

* On request

Dimensions

ACCESSORIES	
Suspend Installation Kit	ITP-SP
IR remote controller	ITP-CNT



ITP Series

ITP - INTEGRATED TRIPROOF



CREE LIGHTING

FEATURES

- LED Lumen output: Up to 6389lm
- LED module efficiency: > 120 lm/W,
- Luminaire efficiency: up to 142 lm/W
- Protection Degree: IP66 / IK08
- CRI 80
- CCT: 3000K, 4000K, 5000K(On request)
- Operative temperature: -30°C up to +40°C(sensor option is -25°C to +35°C)
- UGR (4H, 8H reference value) < 25
- Expected Lifetime (Ta=25°): L80B10 > 100,000 hrs
- Standard with in/out wiring version for series connection, max 800W
- Insulation class: Class II

CONSTRUCTION AND MATERIALS

- One-piece polycarbonate housing
- Mounting brackets included
- Dust and corrosion resistant
- Finishes: White , End-Power blue

WARRANTY AND CERTIFICATIONS

- Limited Warranty: 5 years
- Risk group exempt
- Compliant: EN 60598-1; EN 60598-2-2



ELECTRICAL DATA*

Dimensions	System Watts 220-240V	Total Current
		@230V, 50Hz
600mm	18W	0,12A
1200mm	36W	0,25A
1500mm	50W	0,3A

* Electrical data at 25°C (77°F)

WEIGHT

DIMENSIONS	WEIGHT
600mm	0.8Kg
1200mm	1.2Kg
1500mm	1.5Kg

ITP Series

ITP - INTEGRATED TRIPROOF

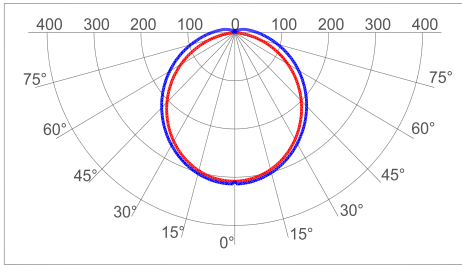


CREE LIGHTING

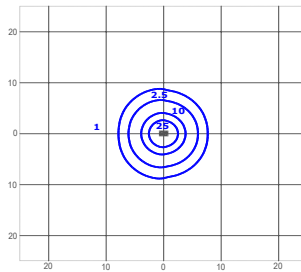
Photometry

All published luminaire photometric testing performed to IESNA LM-79-08 standards by a NVLAP laboratory. To obtain an IES file specific to your project consult: www.creelighting-europe.com

3L



cd/klm
— C0 - C180 — C90 - C270

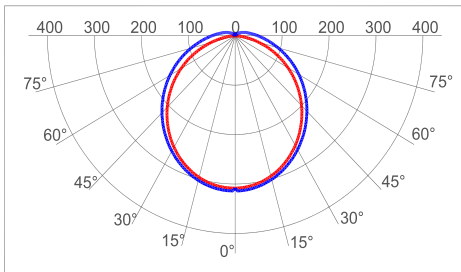


lux
ITP-A-CL-3L-408-24-FX
Mounting Height: 3m

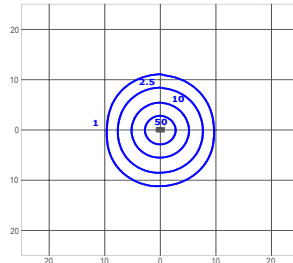
LUMEN OUTPUT		
Input Power Designator	3000K	4000K
	3L	Initial Delivered Lumens* 2160

* Initial delivered lumens at 25°C (77°F).
 Actual production yield may vary between -10 and +10% of initial delivered lumens

5L



cd/klm
— C0 - C180 — C90 - C270

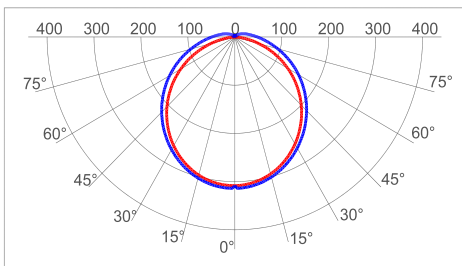


lux
ITP-A-CL-5L-408-24-FX
Mounting Height: 3m

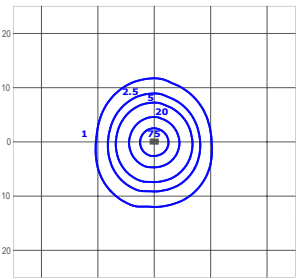
LUMEN OUTPUT		
Input Power Designator	3000K	4000K
	5L	Initial Delivered Lumens* 4320

* Initial delivered lumens at 25°C (77°F).
 Actual production yield may vary between -10 and +10% of initial delivered lumens

7L



cd/klm
— C0 - C180 — C90 - C270



lux
ITP-A-CL-7L-408-24-FX
Mounting Height: 3m

LUMEN OUTPUT		
Input Power Designator	3000K	4000K
	7L	Initial Delivered Lumens* 6000

* Initial delivered lumens at 25°C (77°F).
 Actual production yield may vary between -10 and +10% of initial delivered lumens