

Square LED High Output Series



CREE LIGHTING

Product Description

Conceived with an essential design, this luminaire has a simple square shape which practically integrates in all environments; also its square profile with rounded edges reduces wind exposure. Cree Square LED Series is conceived with a die-cast aluminium housing, with a powder finish after treatment of the surfaces which protects the fixture from corrosion, fading and peeling. It is equipped with a closing plate that mounts a stand alone light-engine, all powered by Cree technology and featuring the NanoOptic® Precision Delivery Grid™ optic system. With many available optics and an extensive range of mounting brackets, Cree LED Square Series enhance interchangeable configurations.

Applications: The possible applications are endless: street lighting and urban decoration, general area lighting and parking lots, spotlight for monuments and facades.

Performance Summary

NanoOptic® Precision Delivery Grid™ optic

Initial Delivered Lumens: up to 8100lm

Efficacy: up to 140 Lm/W

Lifetime color consistency: Step Mac Adam ≤ 4 Step

Limited Warranty: 5 years on luminaire



Example: SMI-E-2LG-A-30K-+-24-BK-VM-SF-00 + SMI-VM

Ordering Information

SMI	- E	- 2LG	- A	- 30K	- +	- 24	- BK	- VM	- SF	- 00
Product	Version	Optic	Input Power	CCT	Insulation Class	Voltage	Color	Control Options	Variant	Cable length
SMI	E	2LG Type II long	A 45W	30K 3000K	+ Class 1	24 220-240V	BK Black	VM Virtual Midnight FA Field Adjustable	S Standard F Fuse	00 No cable (only for mounting "9")
				40K 4000K			SV Silver			
		210 Type II short 1,0		57K 5700K	^ Class 2		BZ Bronze			
		2SH Type II short					WH White			
		3SH Type III short								
		3ME Type III medium								
		4ME Type IV medium	B 63W	27K 2700K	+ Class 1	24 220-240V	BK Black	FX Fixed Output Q Field Adjustable Output DM Dimmable 1-10V DQ Field adjustable dimming Y - Z Virtual midnight field programmable DL DALI DY Dynadimmer CL Constant Lumen Output	S Standard U 10kV SF Standard + Fuse UF 10kV + Fuse	01 Exit cable 50c (w/ connector)
		30K 3000K		SV Silver						
		5SH Type V short		40K 4000K	^ Class 2		BZ Bronze			
		5ME Type V medium		57K 5700K			WH White			
								DCF Dynadimmer & CLO Full ; Incl. light turn-off DYF Dynadimmer Full ; Incl. light turn-off SR Sensor ready	Z Zhaga Socket ZF Zhaga Socket + Fuse ZU Zhaga Socket + 10kV ZZ Zhaga Socket + Fuse + 10kV	

PHASE I

PHASE II

Mount (luminaire must be ordered separately)	
SMI-WM	Wall mount
SMI-ADJ*	Adjustable arm (OD 60mm)
SMI-YM*	Yoke mount

* Color options are: WH White BK Black SV Silver BZ Bronze

Square LED High Output Series



CREE LIGHTING

MOUNTING OPTION	
	<p>Mounting SMI-ADJ - Adjustable arm (OD 60mm) Micro-adjustment jointed fitting which turns 360° on the horizontal plane and can be tilted 180° on the vertical plane at 2.5° increments.</p>
	<p>Mounting SMI-YM - Yoke mount This mounting bracket can be tilted 180° on the vertical plane with double locking steps every 5° increments. It can be adjusted with side-screws and a safety bolt.</p>
	<p>Mounting SMI-WM - Wall mount Die-cast aluminium wall mounting box which can be used for direct or indirect lighting. The W-type plate comes with watertight gasket and three knockouts for surface conduits.</p>

MAXIMUM WIND AREA
Lateral Surface Wind Exposed
0,1m ²

DIMENSIONS



A special Retrofit kit is available on request to upgrade existing SQUARE installations. Please ask us for more information.

Square LED High Output Series



FEATURES

- LED Lumen output: Up to 8000Lm
- LED module efficacy: Up to 140 lm/W
- Luminaire efficiency: up to 140 lm/W
- CCT: 2700, 3000K, 4000K, 5700K
- CRI Standard min.70
- Protection Degree: IK08/ P65 (Input power A); IP66 (Input power B)
- MacAdam Step : 4SDCM
- Expected Lifetime (Ta=25°): L80F10 Up to >130Khrs
- Overvoltage protection: up to 10kV CM/DM
- Operating temperature: -40°C up to +40°C
- Available with fuse and 20mm Zhaga Book 18 connector

CONSTRUCTION AND MATERIALS

- Die cast aluminum housing
- Cable type H05RN-F
- Weight: 5,3Kg
-

WARRANTY AND CERTIFICATIONS

- Warranty: 5 years on luminaire
- UMSUG Charge code (UK Power performance test)
- Risk group exempt
- Luminaire and finish endurance tested to withstand 2,500 hours of elevated ambient salt fog conditions as defined in ASTM Standard B 117
- Compliant to: EN 60598-1; EN 60598-2-3

ELECTRICAL DATA*

Input Power Designator	System Watts 220-240V	Total Current	Power Factor
		@230V, 50Hz	
A	45	0,28	0,98
B	63	0,28	0,98

* Electrical data at 25°C (77°F)

RECOMMENDED URBAN SERIES INPUT B- LUMEN MAINTENANCE FACTORS (LMF)¹

Ambient	LMF iniziale	25K hr Projected ² LMF	50K hr Projected ² LMF	75K hr Calculated ³ LMF	100K hr Calculated ³ LMF
-40°C**	1,11	1,10	1,08	1,06	1,03
-30°C**	1,09	1,08	1,05	1,03	1,01
-20°C**	1,08	1,07	1,04	1,02	1,00
-10°C**	1,07	1,05	1,03	1,01	0,99
0**	1,04	1,03	1,01	0,99	0,97
5°C**	1,04	1,03	1,01	0,99	0,97
10°C**	1,03	1,02	1,00	0,98	0,96
15°C	1,02	1,01	0,99	0,97	0,95
20°C	1,01	1,00	0,98	0,96	0,94
25°C	1,00	0,99	0,97	0,95	0,93
30°C	0,99	0,98	0,96	0,94	0,92
40°C	0,97	0,96	0,94	0,92	0,90

¹ Lumen maintenance values calculated at 25°C, with TM-21 based on LM-80 data and on-site testing.

² In accordance with IESNA TM-21-11, the values shown in the "projected" column represent interpolated and arc values within six times (6X) the total duration in hours of the tests (performed according to IESNA LM-80-08) to which the device has been subjected ((DUT) e.g. the LED chip).

³ In accordance with IESNA TM-21-11, the values shown in the column "calculated" are calculated based on a time span greater than six times (6X) the total duration in hours of the tests (performed according to IESNA LM-80-08) to which the device has been subjected ((DUT) e.g. the LED chip).

ZHAGA OPTIONS AVAILABLE

DCF	Dynadimmer & CLO Full ; Incl. light turn-off
DYF	Dynadimmer Full ; Incl. light turn-off
SR	Sensor Ready

Square LED High Output Series



Control options - Input Power Designator A - Asymmetric Optics

FIELD ADJUSTABLE FA - INPUT POWER "A"					
Setting Code	System Watts W	Nominal flux (lm)			Description
		3000K	4000K	5700K	
FA06AE1-0007	45	6364	6700	6741	FLD ADJ FAF - MAX WATTAGE SET TO 45W
FA06AE1-0006	43	6080	6401	6440	FLD ADJ FAE - MAX WATTAGE SET TO 43W
FA06AE1-0005	38	5437	5723	5758	FLD ADJ FAD - MAX WATTAGE SET TO 38W
FA06AE1-0004	34	4924	5184	5216	FLD ADJ FAC - MAX WATTAGE SET TO 34W
FA06AE1-0003	29	4227	4450	4478	FLD ADJ FAB - MAX WATTAGE SET TO 29W
FA06AE1-0002	27	3973	4183	4208	FLD ADJ FAA - MAX WATTAGE SET TO 27W
FA06AE1-0001	19	2864	3015	3033	FLD ADJ FA9 - MAX WATTAGE SET TO 19W

VIRTUAL MIDNIGHT VM - INPUT POWER "A"									
Setting Code	System Watts W (High Mode)	Nominal flux (lm)			System Watts W (Low Mode)	Nominal flux (lm)			Description
		3000K	4000K	5700K		3000K	4000K	5700K	
VM06AE1-0009	45	6364	6700	6741	23	3419	3599	3621	VIRT. MID. 8 - MAX WATTAGE 45W SET TO 100%/50% (45W/23W) H24:00-6:00
VM06AE1-0008	43	6080	6401	6440	22	3366	3543	3565	VIRT. MID. 7 - MAX WATTAGE 43W SET TO 100%/50% (43W/22W) H24:00-6:00
VM06AE1-0007	38	5437	5723	5758	19	2864	3015	3033	VIRT. MID. 6 - MAX WATTAGE 38W SET TO 100%/50% (38W/19W) H24:00-6:00
VM06AE1-0006	34	4924	5184	5216	24	3557	3745	3768	VIRT. MID. 5 - MAX WATTAGE 34W SET TO 100%/70% (34W/24W) H24:00-6:00
VM06AE1-0005	29	4227	4450	4478	20	3003	3161	3180	VIRT. MID. 4 - MAX WATTAGE 29W SET TO 100%/70% (29W/20W) H24:00-6:00
VM06AE1-0004	27	3973	4183	4208	19	2864	3015	3033	VIRT. MID. 3 - MAX WATTAGE 27W SET TO 100%/70% (27W/19W) H24:00-6:00
VM06AE1-0003	45	6364	6700	6741	32	4645	4890	4920	VIRT. MID. 2 - MAX WATTAGE 45W SET TO 100%/70% (45W/32W) H24:00-6:00
VM06AE1-0002	43	6080	6401	6440	30	4367	4597	4625	VIRT. MID. 1 - MAX WATTAGE 43W SET TO 100%/70% (43W/30W) H24:00-6:00
VM06AE1-0001	38	5437	5723	5758	27	3973	4183	4208	VIRT. MID. 0 - MAX WATTAGE 38W SET TO 100%/70% (38W/27W) H24:00-6:00

Square LED High Output Series



Control options - Input Power Designator B - Asymmetric Optics

FIXED OUTPUT - INPUT POWER "B"					
Setting Code	System Watts W	Nominal flux (lm)			Description
		3000K	4000K	5700K	
FX06BE1-0010	63	8335	8774	8828	FIXED OUTPUT 63W
FX06BE1-0009	57	7816	8228	8278	FIXED OUTPUT 57W
FX06BE1-0008	50	6961	7328	7372	FIXED OUTPUT 50W
FX06BE1-0007	44	6228	6556	6596	FIXED OUTPUT 44W
FX06BE1-0006	39	5605	5901	5937	FIXED OUTPUT 39W
FX06BE1-0005	35	5072	5339	5372	FIXED OUTPUT 35W
FX06BE1-0004	32	4637	4882	4912	FIXED OUTPUT 32W
FX06BE1-0003	28	4059	4273	4300	FIXED OUTPUT 28W
FX06BE1-0002	25	3626	3817	3841	FIXED OUTPUT 25W
FX06BE1-0001	20	2831	2981	2999	FIXED OUTPUT 20W

Other Setting Options are available. For more information, contact Cree Lighting Europe.

DIMMABLE 1-10 DM - INPUT POWER "B"					
Setting Code	System Watts W	Nominal flux (lm)			Description
		3000K	4000K	5700K	
DM06BE1-0010	63	8335	8774	8828	DIMMABLE OUTPUT 63W
DM06BE1-0009	57	7816	8228	8278	DIMMABLE OUTPUT 57W
DM06BE1-0008	50	6961	7328	7372	DIMMABLE OUTPUT 50W
DM06BE1-0007	44	6228	6556	6596	DIMMABLE OUTPUT 44W
DM06BE1-0006	39	5605	5901	5937	DIMMABLE OUTPUT 39W
DM06BE1-0005	35	5072	5339	5372	DIMMABLE OUTPUT 35W
DM06BE1-0004	32	4637	4882	4912	DIMMABLE OUTPUT 32W
DM06BE1-0003	28	4059	4273	4300	DIMMABLE OUTPUT 28W
DM06BE1-0002	25	3626	3817	3841	DIMMABLE OUTPUT 25W
DM06BE1-0001	20	2831	2981	2999	DIMMABLE OUTPUT 20W

Other Setting Options are available. For more information, contact Cree Lighting Europe.

DYNADIMMER - INPUT POWER "B"													
Setting Code	System Watts W (High Mode)	Nominal flux (lm)			System Watts W (Medium Mode)	Nominal flux (lm)			System Watts W (Low Mode)	Nominal flux (lm)			Description
		3000K	4000K	5700K		3000K	4000K	5700K					
DY06BE1-0007	63	8335	8774	8828					30	4348	4578	4606	DY ON-63W / 22:00-30W / 06:00-63W
DY06BE1-0006	57	7816	8228	8278					28	4059	4273	4300	DY ON-57W / 22:00-28W / 06:00-57W
DY06BE1-0005	50	6961	7328	7372					25	3626	3817	3841	DY ON-50W / 22:00-25W / 06:00-50W
DY06BE1-0004	44	6228	6556	6596					22	3193	3361	3381	DY ON-44W / 22:00-22W / 06:00-44W
DY06BE1-0003	39	5605	5901	5937					19	2687	2828	2846	DY ON-39W / 22:00-19W / 06:00-39W
DY06BE1-0002	35	5072	5339	5372					19	2687	2828	2846	DY ON-35W / 22:00-19W / 06:00-35W
DY06BE1-0001	32	4637	4882	4912					19	2687	2828	2846	DY ON-32W / 22:00-19W / 06:00-32W
DY06BE1-0016	28	4059	4273	4300					19	2687	2828	2846	DY ON-28W / 22:00-19W / 06:00-28W
DY06BE1-0015	25	3626	3817	3841					19	2687	2828	2846	DY ON-25W / 22:00-19W / 06:00-25W
DY06BE1-0014	63	8335	8774	8828	48	6696	7049	7092	30	4348	4578	4606	DY ON-63W / 22:00-48W / 00:00-30W / 06:00-63W
DY06BE1-0013	57	7816	8228	8278	44	6228	6556	6596	28	4059	4273	4300	DY ON-57W / 22:00-44W / 00:00-28W / 06:00-57W
DY06BE1-0012	50	6961	7328	7372	39	5605	5901	5937	25	3626	3817	3841	DY ON-50W / 22:00-39W / 00:00-25W / 06:00-50W
DY06BE1-0011	44	6228	6556	6596	32	4637	4882	4912	22	3193	3361	3381	DY ON-44W / 22:00-32W / 00:00-22W / 06:00-44W
DY06BE1-0010	39	5605	5901	5937	30	4348	4578	4606	19	2687	2828	2846	DY ON-39W / 22:00-30W / 00:00-19W / 06:00-39W
DY06BE1-0009	35	5072	5339	5372	28	4059	4273	4300	19	2687	2828	2846	DY ON-35W / 22:00-28W / 00:00-19W / 06:00-35W
DY06BE1-0008	32	4637	4882	4912	25	3626	3817	3841	19	2687	2828	2846	DY ON-32W / 22:00-25W / 00:00-19W / 06:00-32W

Other Setting Options are available. For more information, contact Cree Lighting Europe.

Square LED High Output Series



Control options - Input Power Designator B - Asymmetric Optics

FIELD ADJUSTABLE Q / DQ - INPUT POWER "B"					
Setting Code	System Watts W	Nominal flux (lm)			Description
		3000K	4000K	5700K	
FA06BE1-0009	63	8335	8774	8828	FLD ADJ - MAX WATTAGE 63W SET TO 63W
FA06BE1-0008	58	7896	8312	8363	FLD ADJ - MAX WATTAGE 63W SET TO 58W
FA06BE1-0007	56	7706	8112	8162	FLD ADJ - MAX WATTAGE 63W SET TO 56W
FA06BE1-0006	52	7175	7554	7600	FLD ADJ - MAX WATTAGE 63W SET TO 52W
FA06BE1-0005	50	6961	7328	7372	FLD ADJ - MAX WATTAGE 63W SET TO 50W
FA06BE1-0004	48	6696	7049	7092	FLD ADJ - MAX WATTAGE 63W SET TO 48W
FA06BE1-0003	43	6116	6438	6478	FLD ADJ - MAX WATTAGE 63W SET TO 43W
FA06BE1-0002	39	5605	5901	5937	FLD ADJ - MAX WATTAGE 63W SET TO 39W
FA06BE1-0001	33	4782	5034	5065	FLD ADJ - MAX WATTAGE 63W SET TO 33W

VIRTUAL MIDNIGHT Y/Z - INPUT POWER "B"									
Setting Code	System Watts W (High Mode)	Nominal flux (lm)			System Watts W (Low Mode)	Nominal flux (lm)			Description
		3000K	4000K	5700K		3000K	4000K	5700K	
VY06BE1-0001	63	8335	8774	8828	47	6618	6967	7009	VIRT. MID. Y - MAX WATTAGE SET TO 100%/75% (63W/47W) H21:00-4:00
VY06BE1-0002	63	8335	8774	8828	32	4565	4806	4835	VIRT. MID. Y - MAX WATTAGE SET TO 100%/50% (63W/32W) H21:00-4:00
VY06BE1-0003	63	8335	8774	8828	16	2181	2296	2310	VIRT. MID. Y - MAX WATTAGE SET TO 100%/25% (63W/16W) H21:00-4:00
VY06BE1-0004	47	6618	6967	7009	32	4565	4806	4835	VIRT. MID. Y - MAX WATTAGE SET TO 75%/50% (47W/32W) H21:00-4:00
VY06BE1-0005	47	6618	6967	7009	16	2181	2296	2310	VIRT. MID. Y - MAX WATTAGE SET TO 75%/25% (47W/16W) H21:00-4:00
VY06BE1-0006	32	4565	4806	4835	16	2181	2296	2310	VIRT. MID. Y - MAX WATTAGE SET TO 50%/25% (32W/16W) H21:00-4:00
VZ06BE1-0001	55	7530	7927	7976	43	6116	6438	6478	VIRT. MID. Z - MAX WATTAGE SET TO 87%/69% (55W/43W) H21:00-4:00
VZ06BE1-0002	55	7530	7927	7976	35	5000	5264	5296	VIRT. MID. Z - MAX WATTAGE SET TO 87%/55% (55W/35W) H21:00-4:00
VZ06BE1-0003	55	7530	7927	7976	22	3193	3361	3381	VIRT. MID. Z - MAX WATTAGE SET TO 87%/35% (55W/22W) H21:00-4:00
VZ06BE1-0004	43	6116	6438	6478	35	5000	5264	5296	VIRT. MID. Z - MAX WATTAGE SET TO 69%/55% (43W/35W) H21:00-4:00
VZ06BE1-0005	43	6116	6438	6478	22	3193	3361	3381	VIRT. MID. Z - MAX WATTAGE SET TO 69%/35% (43W/22W) H21:00-4:00
VZ06BE1-0006	35	5000	5264	5296	22	3193	3361	3381	VIRT. MID. Z - MAX WATTAGE SET TO 55%/35% (35W/22W) H21:00-4:00

CLO - INPUT POWER "B"	
Setting Code	Description
CLO6BE1-0001	MAX 63W CLO 50.000 HOURS START AT 90%
CLO6BE1-0002	MAX 63W CLO 100.000 HOURS START AT 80%

CLO - INPUT POWER "B" SR	
Setting Code	Description
CLS06BE0-0001	MAX 63W CLO 50.000 HOURS START AT 90% SR
CLS06BE0-0002	MAX 63W CLO 100.000 HOURS START AT 80% SR

Other Setting Options are available. For more information, contact Cree Lighting Europe.

FIXED OUTPUT - INPUT POWER "B" SR					
Setting Code	System Watts W	Nominal flux (lm)			Description
		3000K	4000K	5700K	
FX06BE1-0010	63	8335	8774	8828	FIXED OUTPUT 63W SR
FX06BE1-0009	57	7816	8228	8278	FIXED OUTPUT 57W SR
FX06BE1-0008	50	6961	7328	7372	FIXED OUTPUT 50W SR
FX06BE1-0007	44	6228	6556	6596	FIXED OUTPUT 44W SR
FX06BE1-0006	39	5605	5901	5937	FIXED OUTPUT 39W SR
FX06BE1-0005	35	5072	5339	5372	FIXED OUTPUT 35W SR
FX06BE1-0004	32	4637	4882	4912	FIXED OUTPUT 32W SR
FX06BE1-0003	28	4059	4273	4300	FIXED OUTPUT 28W SR
FX06BE1-0002	25	3626	3817	3841	FIXED OUTPUT 25W SR
FX06BE1-0001	20	2831	2981	2999	FIXED OUTPUT 20W SR

Other Setting Options are available. For more information, contact Cree Lighting Europe.

Square LED High Output Series



Control options - Input Power Designator B - Asymmetric Optics

DYNADIMMER 6HRS VERSION - INPUT POWER "B SR													
Setting Code	System Watts W (High Mode)	Nominal flux (lm)			System Watts W (Medium Mode)	Nominal flux (lm)			System Watts W (Low Mode)	Nominal flux (lm)			Description
		3000K	4000K	5700K		3000K	4000K	5700K					
DYS06BE0-0018	63	8335	8774	8828					30	4348	4578	4606	DY ON-63W / 00:00-30W / 06:00-63W SR
DYS06BE0-0017	57	7816	8228	8278					28	4059	4273	4300	DY ON-57W / 00:00-28W / 06:00-57W SR
DYS06BE0-0016	50	6961	7328	7372					25	3626	3817	3841	DY ON-50W / 00:00-25W / 06:00-50W SR
DYS06BE0-0015	44	6228	6556	6596					22	3193	3361	3381	DY ON-44W / 00:00-22W / 06:00-44W SR
DYS06BE0-0014	39	5605	5901	5937					19	2687	2828	2846	DY ON-39W / 00:00-19W / 06:00-39W SR
DYS06BE0-0013	35	5072	5339	5372					19	2687	2828	2846	DY ON-35W / 00:00-19W / 06:00-35W SR
DYS06BE0-0012	32	4637	4882	4912					19	2687	2828	2846	DY ON-32W / 00:00-19W / 06:00-32W SR
DYS06BE0-0011	28	4059	4273	4300					19	2687	2828	2846	DY ON-28W / 00:00-19W / 06:00-28W SR
DYS06BE0-0010	25	3626	3817	3841					19	2687	2828	2846	DY ON-25W / 00:00-19W / 06:00-25W SR

Other Setting Options are available. For more information, contact Cree Lighting Europe.

DYNADIMMER 8HRS VERSION - INPUT POWER "B SR													
Setting Code	System Watts W (High Mode)	Nominal flux (lm)			System Watts W (Medium Mode)	Nominal flux (lm)			System Watts W (Low Mode)	Nominal flux (lm)			Description
		3000K	4000K	5700K		3000K	4000K	5700K					
DYS06BE0-0009	63	8335	8774	8828					30	4348	4578	4606	DY ON-63W / 22:00-30W / 06:00-63W SR
DYS06BE0-0008	57	7816	8228	8278					28	4059	4273	4300	DY ON-57W / 22:00-28W / 06:00-57W SR
DYS06BE0-0007	50	6961	7328	7372					25	3626	3817	3841	DY ON-50W / 22:00-25W / 06:00-50W SR
DYS06BE0-0006	44	6228	6556	6596					22	3193	3361	3381	DY ON-44W / 22:00-22W / 06:00-44W SR
DYS06BE0-0005	39	5605	5901	5937					19	2687	2828	2846	DY ON-39W / 22:00-19W / 06:00-39W SR
DYS06BE0-0004	35	5072	5339	5372					19	2687	2828	2846	DY ON-35W / 22:00-19W / 06:00-35W SR
DYS06BE0-0003	32	4637	4882	4912					19	2687	2828	2846	DY ON-32W / 22:00-19W / 06:00-32W SR
DYS06BE0-0002	28	4059	4273	4300					19	2687	2828	2846	DY ON-28W / 22:00-19W / 06:00-28W SR
DYS06BE0-0001	25	3626	3817	3841					19	2687	2828	2846	DY ON-25W / 22:00-19W / 06:00-25W SR
DYS06BE0-0025	63	8335	8774	8828	48	6696	7049	7092	30	4348	4578	4606	DY ON-63W / 22:00-48W / 00:00-30W / 06:00-63W SR
DYS06BE0-0024	57	7816	8228	8278	44	6228	6556	6596	28	4059	4273	4300	DY ON-57W / 22:00-44W / 00:00-28W / 06:00-57W SR
DYS06BE0-0023	50	6961	7328	7372	39	5605	5901	5937	25	3626	3817	3841	DY ON-50W / 22:00-39W / 00:00-25W / 06:00-50W SR
DYS06BE0-0022	44	6228	6556	6596	32	4637	4882	4912	22	3193	3361	3381	DY ON-44W / 22:00-32W / 00:00-22W / 06:00-44W SR
DYS06BE0-0021	39	5605	5901	5937	30	4348	4578	4606	19	2687	2828	2846	DY ON-39W / 22:00-30W / 00:00-19W / 06:00-39W SR
DYS06BE0-0020	35	5072	5339	5372	28	4059	4273	4300	19	2687	2828	2846	DY ON-35W / 22:00-28W / 00:00-19W / 06:00-35W SR
DYS06BE0-0019	32	4637	4882	4912	25	3626	3817	3841	19	2687	2828	2846	DY ON-32W / 22:00-25W / 00:00-19W / 06:00-32W SR

Other Setting Options are available. For more information, contact Cree Lighting Europe.

Square LED High Output Series



Control options - Input Power Designator A - Symmetric Optics

FIELD ADJUSTABLE FA - INPUT POWER "A"					
Setting Code	System Watts W	Nominal flux (lm)			Description
		3000K	4000K	5700K	
FA06AE1-0007	45	4539	5537	5809	FLD ADJ FAF - MAX WATTAGE SET TO 45W
FA06AE1-0006	43	4336	5290	5550	FLD ADJ FAE - MAX WATTAGE SET TO 43W
FA06AE1-0005	38	3877	4730	4962	FLD ADJ FAD - MAX WATTAGE SET TO 38W
FA06AE1-0004	34	3511	4284	4495	FLD ADJ FAC - MAX WATTAGE SET TO 34W
FA06AE1-0003	29	3015	3678	3859	FLD ADJ FAB - MAX WATTAGE SET TO 29W
FA06AE1-0002	27	2833	3457	3627	FLD ADJ FAA - MAX WATTAGE SET TO 27W
FA06AE1-0001	19	2042	2492	2614	FLD ADJ FA9 - MAX WATTAGE SET TO 19W

VIRTUAL MIDNIGHT VM - INPUT POWER "A"									
Setting Code	System Watts W (High Mode)	Nominal flux (lm)			System Watts W (Low Mode)	Nominal flux (lm)			Description
		3000K	4000K	5700K		3000K	4000K	5700K	
VM06AE1-0009	45	4539	5537	5809	23	2896	2975	2993	VIRT. MID. 8 - MAX WATTAGE 45W SET TO 100%/50% (45W/23W) H24:00-6:00
VM06AE1-0008	43	4336	5290	5550	22	2711	2854	2871	VIRT. MID. 7 - MAX WATTAGE 43W SET TO 100%/50% (43W/22W) H24:00-6:00
VM06AE1-0007	38	3877	4730	4962	19	2042	2492	2614	VIRT. MID. 6 - MAX WATTAGE 38W SET TO 100%/50% (38W/19W) H24:00-6:00
VM06AE1-0006	34	3511	4284	4495	24	2940	3095	3114	VIRT. MID. 5 - MAX WATTAGE 34W SET TO 100%/70% (34W/24W) H24:00-6:00
VM06AE1-0005	29	3015	3678	3859	20	2482	2613	2629	VIRT. MID. 4 - MAX WATTAGE 29W SET TO 100%/70% (29W/20W) H24:00-6:00
VM06AE1-0004	27	2833	3457	3627	19	2042	2492	2614	VIRT. MID. 3 - MAX WATTAGE 27W SET TO 100%/70% (27W/19W) H24:00-6:00
VM06AE1-0003	45	4539	5537	5809	32	3840	4042	4067	VIRT. MID. 2 - MAX WATTAGE 45W SET TO 100%/70% (45W/32W) H24:00-6:00
VM06AE1-0002	43	4336	5290	5550	30	3609	3799	3822	VIRT. MID. 1 - MAX WATTAGE 43W SET TO 100%/70% (43W/30W) H24:00-6:00
VM06AE1-0001	38	3877	4730	4962	27	2833	3457	3627	VIRT. MID. 0 - MAX WATTAGE 38W SET TO 100%/70% (38W/27W) H24:00-6:00

Square LED High Output Series



Control options - Input Power Designator B - Symmetric Optics

FIXED OUTPUT - INPUT POWER "B"					
Setting Code	System Watts W	Nominal flux (lm)			Description
		3000K	4000K	5700K	
FX06BE1-0010	63	6137	7487	7855	FIXED OUTPUT 63W
FX06BE1-0009	57	5755	7021	7366	FIXED OUTPUT 57W
FX06BE1-0008	50	5125	6253	6560	FIXED OUTPUT 50W
FX06BE1-0007	44	4585	5594	5869	FIXED OUTPUT 44W
FX06BE1-0006	39	4127	5035	5283	FIXED OUTPUT 39W
FX06BE1-0005	35	3734	4556	4780	FIXED OUTPUT 35W
FX06BE1-0004	32	3415	4166	4371	FIXED OUTPUT 32W
FX06BE1-0003	28	2990	3648	3827	FIXED OUTPUT 28W
FX06BE1-0002	25	2671	3259	3419	FIXED OUTPUT 25W
FX06BE1-0001	20	2085	2543	2668	FIXED OUTPUT 20W

Other Setting Options are available. For more information, contact Cree Lighting Europe.

DIMMABLE 1-10 DM - INPUT POWER "B"					
Setting Code	System Watts W	Nominal flux (lm)			Description
		3000K	4000K	5700K	
DM06BE1-0010	63	6137	7487	7855	DIMMABLE OUTPUT 63W
DM06BE1-0009	57	5755	7021	7366	DIMMABLE OUTPUT 57W
DM06BE1-0008	50	5125	6253	6560	DIMMABLE OUTPUT 50W
DM06BE1-0007	44	4585	5594	5869	DIMMABLE OUTPUT 44W
DM06BE1-0006	39	4127	5035	5283	DIMMABLE OUTPUT 39W
DM06BE1-0005	35	3734	4556	4780	DIMMABLE OUTPUT 35W
DM06BE1-0004	32	3415	4166	4371	DIMMABLE OUTPUT 32W
DM06BE1-0003	28	2990	3648	3827	DIMMABLE OUTPUT 28W
DM06BE1-0002	25	2671	3259	3419	DIMMABLE OUTPUT 25W
DM06BE1-0001	20	2085	2543	2668	DIMMABLE OUTPUT 20W

Other Setting Options are available. For more information, contact Cree Lighting Europe.

DYNADIMMER - INPUT POWER "B"													
Setting Code	System Watts W (High Mode)	Nominal flux (lm)			System Watts W (Medium Mode)	Nominal flux (lm)			System Watts W (Low Mode)	Nominal flux (lm)			Description
		3000K	4000K	5700K		3000K	4000K	5700K					
DY06BE1-0007	63	6137	7487	7855					30	3203	3907	4099	DY ON-63W / 22:00-30W / 06:00-63W
DY06BE1-0006	57	5755	7021	7366					28	2990	3648	3827	DY ON-57W / 22:00-28W / 06:00-57W
DY06BE1-0005	50	5125	6253	6560					25	2671	3259	3419	DY ON-50W / 22:00-25W / 06:00-50W
DY06BE1-0004	44	4585	5594	5869					22	2352	2870	3011	DY ON-44W / 22:00-22W / 06:00-44W
DY06BE1-0003	39	4127	5035	5283					19	1980	2416	2535	DY ON-39W / 22:00-19W / 06:00-39W
DY06BE1-0002	35	3734	4556	4780					19	1980	2416	2535	DY ON-35W / 22:00-19W / 06:00-35W
DY06BE1-0001	32	3415	4166	4371					19	1980	2416	2535	DY ON-32W / 22:00-19W / 06:00-32W
DY06BE1-0016	28	2990	3648	3827					19	1980	2416	2535	DY ON-28W / 22:00-19W / 06:00-28W
DY06BE1-0015	25	2671	3259	3419					19	1980	2416	2535	DY ON-25W / 22:00-19W / 06:00-25W
DY06BE1-0014	63	6137	7487	7855	48	4930	6015	6311	30	3203	3907	4099	DY ON-63W / 22:00-48W / 00:00-30W / 06:00-63W
DY06BE1-0013	57	5755	7021	7366	44	4585	5594	5869	28	2990	3648	3827	DY ON-57W / 22:00-44W / 00:00-28W / 06:00-57W
DY06BE1-0012	50	5125	6253	6560	39	4127	5035	5283	25	2671	3259	3419	DY ON-50W / 22:00-39W / 00:00-25W / 06:00-50W
DY06BE1-0011	44	4585	5594	5869	32	3415	4166	4371	22	2352	2870	3011	DY ON-44W / 22:00-32W / 00:00-22W / 06:00-44W
DY06BE1-0010	39	4127	5035	5283	30	3203	3907	4099	19	1980	2416	2535	DY ON-39W / 22:00-30W / 00:00-19W / 06:00-39W
DY06BE1-0009	35	3734	4556	4780	28	2990	3648	3827	19	1980	2416	2535	DY ON-35W / 22:00-28W / 00:00-19W / 06:00-35W
DY06BE1-0008	32	3415	4166	4371	25	2671	3259	3419	19	1980	2416	2535	DY ON-32W / 22:00-25W / 00:00-19W / 06:00-32W

Other Setting Options are available. For more information, contact Cree Lighting Europe.

Square LED High Output Series



Control options - Input Power Designator B - Symmetric Optics

FIELD ADJUSTABLE Q / DQ - INPUT POWER "B"					
Setting Code	System Watts W	Nominal flux (lm)			Description
		3000K	4000K	5700K	
FA06BE1-0009	63	6137	7487	7855	FLD ADJ - MAX WATTAGE 63W SET TO 63W
FA06BE1-0008	58	5814	7093	7442	FLD ADJ - MAX WATTAGE 63W SET TO 58W
FA06BE1-0007	56	5674	6922	7263	FLD ADJ - MAX WATTAGE 63W SET TO 56W
FA06BE1-0006	52	5283	6446	6763	FLD ADJ - MAX WATTAGE 63W SET TO 52W
FA06BE1-0005	50	5125	6253	6560	FLD ADJ - MAX WATTAGE 63W SET TO 50W
FA06BE1-0004	48	4930	6015	6311	FLD ADJ - MAX WATTAGE 63W SET TO 48W
FA06BE1-0003	43	4503	5494	5764	FLD ADJ - MAX WATTAGE 63W SET TO 43W
FA06BE1-0002	39	4127	5035	5283	FLD ADJ - MAX WATTAGE 63W SET TO 39W
FA06BE1-0001	33	3521	4296	4507	FLD ADJ - MAX WATTAGE 63W SET TO 33W

VIRTUAL MIDNIGHT Y/Z - INPUT POWER "B"									
Setting Code	System Watts W (High Mode)	Nominal flux (lm)			System Watts W (Low Mode)	Nominal flux (lm)			Description
		3000K	4000K	5700K		3000K	4000K	5700K	
VY06BE1-0001	63	6137	7487	7855	47	4873	5945	6237	VIRT. MID. Y - MAX WATTAGE SET TO 100%/75% (63W/47W) H21:00-4:00
VY06BE1-0002	63	6137	7487	7855	32	3362	4102	4303	VIRT. MID. Y - MAX WATTAGE SET TO 100%/50% (63W/32W) H21:00-4:00
VY06BE1-0003	63	6137	7487	7855	16	1625	1983	2080	VIRT. MID. Y - MAX WATTAGE SET TO 100%/25% (63W/16W) H21:00-4:00
VY06BE1-0004	47	4873	5945	6237	32	3362	4102	4303	VIRT. MID. Y - MAX WATTAGE SET TO 75%/50% (47W/32W) H21:00-4:00
VY06BE1-0005	47	4873	5945	6237	16	1625	1983	2080	VIRT. MID. Y - MAX WATTAGE SET TO 75%/25% (47W/16W) H21:00-4:00
VY06BE1-0006	32	3362	4102	4303	16	1625	1983	2080	VIRT. MID. Y - MAX WATTAGE SET TO 50%/25% (32W/16W) H21:00-4:00
VZ06BE1-0001	55	5545	6765	7097	43	4503	5494	5764	VIRT. MID. Z - MAX WATTAGE SET TO 87%/69% (55W/43W) H21:00-4:00
VZ06BE1-0002	55	5545	6765	7097	35	3682	4492	4713	VIRT. MID. Z - MAX WATTAGE SET TO 87%/55% (55W/35W) H21:00-4:00
VZ06BE1-0003	55	5545	6765	7097	22	2352	2870	3011	VIRT. MID. Z - MAX WATTAGE SET TO 87%/35% (55W/22W) H21:00-4:00
VZ06BE1-0004	43	4503	5494	5764	35	3682	4492	4713	VIRT. MID. Z - MAX WATTAGE SET TO 69%/55% (43W/35W) H21:00-4:00
VZ06BE1-0005	43	4503	5494	5764	22	2352	2870	3011	VIRT. MID. Z - MAX WATTAGE SET TO 69%/35% (43W/22W) H21:00-4:00
VZ06BE1-0006	35	3682	4492	4713	22	2352	2870	3011	VIRT. MID. Z - MAX WATTAGE SET TO 55%/35% (35W/22W) H21:00-4:00

CLO - INPUT POWER "B"	
Setting Code	Description
CLO6BE1-0001	MAX 63W CLO 50.000 HOURS START AT 90%
CLO6BE1-0002	MAX 63W CLO 100.000 HOURS START AT 80%

CLO - INPUT POWER "B" SR	
Setting Code	Description
CLS06BE0-0001	MAX 63W CLO 50.000 HOURS START AT 90% SR
CLS06BE0-0002	MAX 63W CLO 100.000 HOURS START AT 80% SR

Other Setting Options are available. For more information, contact Cree Lighting Europe.

FIXED OUTPUT - INPUT POWER "B" SR					
Setting Code	System Watts W	Nominal flux (lm)			Description
		3000K	4000K	5700K	
FX06BE1-0010	63	6137	7487	7855	FIXED OUTPUT 63W SR
FX06BE1-0009	57	5755	7021	7366	FIXED OUTPUT 57W SR
FX06BE1-0008	50	5125	6253	6560	FIXED OUTPUT 50W SR
FX06BE1-0007	44	4585	5594	5869	FIXED OUTPUT 44W SR
FX06BE1-0006	39	4127	5035	5283	FIXED OUTPUT 39W SR
FX06BE1-0005	35	3734	4556	4780	FIXED OUTPUT 35W SR
FX06BE1-0004	32	3415	4166	4371	FIXED OUTPUT 32W SR
FX06BE1-0003	28	2990	3648	3827	FIXED OUTPUT 28W SR
FX06BE1-0002	25	2671	3259	3419	FIXED OUTPUT 25W SR
FX06BE1-0001	20	2085	2543	2668	FIXED OUTPUT 20W SR

Other Setting Options are available. For more information, contact Cree Lighting Europe.

Square LED High Output Series



Control options - Input Power Designator B - Symmetric Optics

DYNADIMMER 6HRS VERSION - INPUT POWER "B SR													
Setting Code	System Watts W (High Mode)	Nominal flux (lm)			System Watts W (Medium Mode)	Nominal flux (lm)			System Watts W (Low Mode)	Nominal flux (lm)			Description
		3000K	4000K	5700K		3000K	4000K	5700K					
DYS06BE0-0018	63	6137	7487	7855					30	3203	3907	4099	DY ON-63W / 00:00-30W / 06:00-63W SR
DYS06BE0-0017	57	5755	7021	7366					28	2990	3648	3827	DY ON-57W / 00:00-28W / 06:00-57W SR
DYS06BE0-0016	50	5125	6253	6560					25	2671	3259	3419	DY ON-50W / 00:00-25W / 06:00-50W SR
DYS06BE0-0015	44	4585	5594	5869					22	2352	2870	3011	DY ON-44W / 00:00-22W / 06:00-44W SR
DYS06BE0-0014	39	4127	5035	5283					19	1980	2416	2535	DY ON-39W / 00:00-19W / 06:00-39W SR
DYS06BE0-0013	35	3734	4556	4780					19	1980	2416	2535	DY ON-35W / 00:00-19W / 06:00-35W SR
DYS06BE0-0012	32	3415	4166	4371					19	1980	2416	2535	DY ON-32W / 00:00-19W / 06:00-32W SR
DYS06BE0-0011	28	2990	3648	3827					19	1980	2416	2535	DY ON-28W / 00:00-19W / 06:00-28W SR
DYS06BE0-0010	25	2671	3259	3419					19	1980	2416	2535	DY ON-25W / 00:00-19W / 06:00-25W SR

Other Setting Options are available. For more information, contact Cree Lighting Europe.

DYNADIMMER 8HRS VERSION - INPUT POWER "B SR													
Setting Code	System Watts W (High Mode)	Nominal flux (lm)			System Watts W (Medium Mode)	Nominal flux (lm)			System Watts W (Low Mode)	Nominal flux (lm)			Description
		3000K	4000K	5700K		3000K	4000K	5700K					
DYS06BE0-0009	63	6137	7487	7855					30	3203	3907	4099	DY ON-63W / 22:00-30W / 06:00-63W SR
DYS06BE0-0008	57	5755	7021	7366					28	2990	3648	3827	DY ON-57W / 22:00-28W / 06:00-57W SR
DYS06BE0-0007	50	5125	6253	6560					25	2671	3259	3419	DY ON-50W / 22:00-25W / 06:00-50W SR
DYS06BE0-0006	44	4585	5594	5869					22	2352	2870	3011	DY ON-44W / 22:00-22W / 06:00-44W SR
DYS06BE0-0005	39	4127	5035	5283					19	1980	2416	2535	DY ON-39W / 22:00-19W / 06:00-39W SR
DYS06BE0-0004	35	3734	4556	4780					19	1980	2416	2535	DY ON-35W / 22:00-19W / 06:00-35W SR
DYS06BE0-0003	32	3415	4166	4371					19	1980	2416	2535	DY ON-32W / 22:00-19W / 06:00-32W SR
DYS06BE0-0002	28	2990	3648	3827					19	1980	2416	2535	DY ON-28W / 22:00-19W / 06:00-28W SR
DYS06BE0-0001	25	2671	3259	3419					19	1980	2416	2535	DY ON-25W / 22:00-19W / 06:00-25W SR
DYS06BE0-0025	63	6137	7487	7855	48	4930	6015	6311	30	3203	3907	4099	DY ON-63W / 22:00-48W / 00:00-30W / 06:00-63W SR
DYS06BE0-0024	57	5755	7021	7366	44	4585	5594	5869	28	2990	3648	3827	DY ON-57W / 22:00-44W / 00:00-28W / 06:00-57W SR
DYS06BE0-0023	50	5125	6253	6560	39	4127	5035	5283	25	2671	3259	3419	DY ON-50W / 22:00-39W / 00:00-25W / 06:00-50W SR
DYS06BE0-0022	44	4585	5594	5869	32	3415	4166	4371	22	2352	2870	3011	DY ON-44W / 22:00-32W / 00:00-22W / 06:00-44W SR
DYS06BE0-0021	39	4127	5035	5283	30	3203	3907	4099	19	1980	2416	2535	DY ON-39W / 22:00-30W / 00:00-19W / 06:00-39W SR
DYS06BE0-0020	35	3734	4556	4780	28	2990	3648	3827	19	1980	2416	2535	DY ON-35W / 22:00-28W / 00:00-19W / 06:00-35W SR
DYS06BE0-0019	32	3415	4166	4371	25	2671	3259	3419	19	1980	2416	2535	DY ON-32W / 22:00-25W / 00:00-19W / 06:00-32W SR

Other Setting Options are available. For more information, contact Cree Lighting Europe.

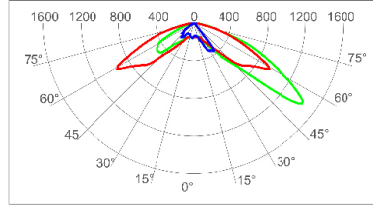
Square LED High Output Series



Photometry

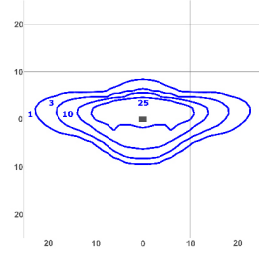
All published luminaire photometric testing performed by an external certified ISO 17025 laboratory.
To obtain an IES file specific to your project consult: www.creelighting-europe.com

2LG - Type II Long



cd/klm
 — C0 - C180 — C90 - C270 — C10-C190

Test Report #: PL11703-033

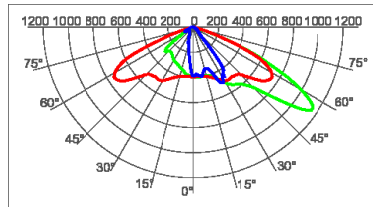


lux
 SMI-E-3-2LG-B-40K
 Mounting Height: 6m

LUMEN OUTPUT - 2LG (Type II Long)			
Input Power Designator	3000K	4000K	5700K
		Initial Delivered Lumens*	Initial Delivered Lumens*
A	5336	5443	5549
B	7412	7803	7851

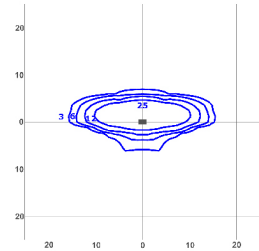
* Initial delivered lumens at 25°C (77°F). Actual production yield may vary between -4 and +10% of initial delivered lumens

275 - Type II Short 0.75



cd/klm
 — C0 - C180 — C90 - C270 — C12.5 - C197.5

Test Report #: PL11703-028

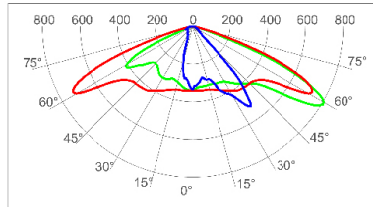


lux
 SMI-E-3-275-B-40K
 Mounting Height: 6m

LUMEN OUTPUT - 275 (Type II Short 0.75)			
Input Power Designator	3000K	4000K	5700K
		Initial Delivered Lumens*	Initial Delivered Lumens*
A	5463	5572	5681
B	7599	8000	8049

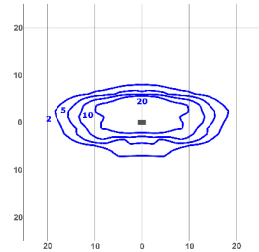
* Initial delivered lumens at 25°C (77°F). Actual production yield may vary between -4 and +10% of initial delivered lumens

210 - Type II Short 1.0



cd/klm
 — C0 - C180 — C90 - C270 — C17.5 - C197.5

Test Report #: PL11703-010

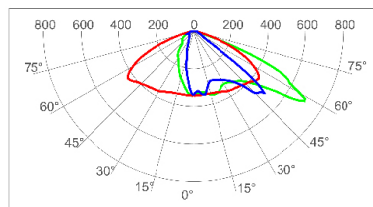


lux
 SMI-E-3-210-B-40K
 Mounting Height: 6m

LUMEN OUTPUT - 210 (Type II Short 1.0)			
Input Power Designator	3000K	4000K	5700K
		Initial Delivered Lumens*	Initial Delivered Lumens*
A	5580	5692	5803
B	7673	8077	8127

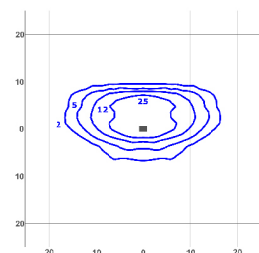
* Initial delivered lumens at 25°C (77°F). Actual production yield may vary between -4 and +10% of initial delivered lumens

2SH - Type II Short



cd/klm
 — C0 - C180 — C90 - C270 — C30-C210

Test Report #: PL11703-029



lux
 SMI-E-3-2SH-B-40K
 Mounting Height: 6m

LUMEN OUTPUT - 2SH (Type II Short)			
Input Power Designator	3000K	4000K	5700K
		Initial Delivered Lumens*	Initial Delivered Lumens*
A	5425	5534	5642
B	7725	8132	8182

* Initial delivered lumens at 25°C (77°F). Actual production yield may vary between -4 and +10% of initial delivered lumens

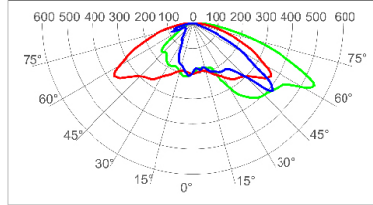
Square LED High Output Series



Photometry

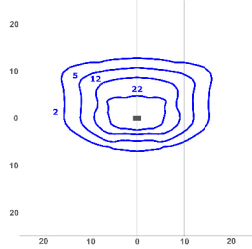
All published luminaire photometric testing performed by an external certified ISO 17025 laboratory.
To obtain an IES file specific to your project consult: www.creelighting-europe.com

3SH - Type III Short



cd/klm
 C0 - C180 C90 - C270 C35 - C215

Test Report #: PL11703-030

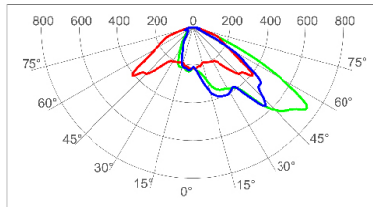


lux
 SMI-E-3-3SH-B-40K
 Mounting Height: 6m

LUMEN OUTPUT - 3SH (Type III Short)			
Input Power Designator	3000K	4000K	5700K
		Initial Delivered Lumens*	Initial Delivered Lumens*
A	5075	5176	5277
B	7057	7429	7475

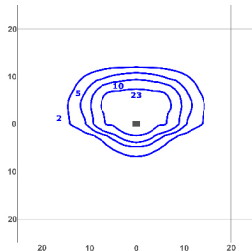
* Initial delivered lumens at 25°C (77°F). Actual production yield may vary between -4 and +10% of initial delivered lumens

3ME - Type III Medium



cd/klm
 C0 - C180 C90 - C270 C45 - C225

Test Report #: PL11703-031

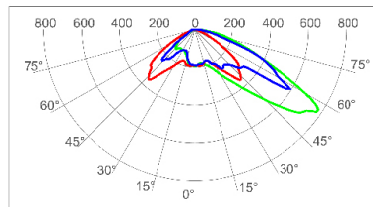


lux
 SMI-E-3-3ME-B-40K
 Mounting Height: 6m

LUMEN OUTPUT - 3ME (Type III Medium)			
Input Power Designator	3000K	4000K	5700K
		Initial Delivered Lumens*	Initial Delivered Lumens*
A	5352	5459	5566
B	7418	7809	7857

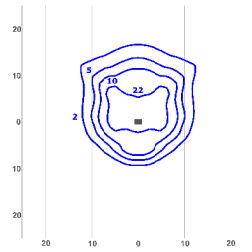
* Initial delivered lumens at 25°C (77°F). Actual production yield may vary between -4 and +10% of initial delivered lumens

4ME - Type IV Medium



cd/klm
 C0 - C180 C90 - C270 C45 - C225

Test Report #: PL11703-032

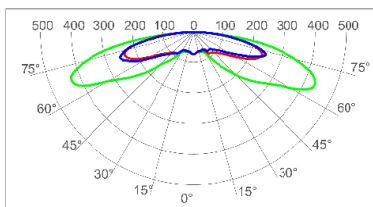


lux
 SMI-E-3-4ME-B-40K
 Mounting Height: 6m

LUMEN OUTPUT - 4ME (Type IV Medium)			
Input Power Designator	3000K	4000K	5700K
		Initial Delivered Lumens*	Initial Delivered Lumens*
A	5375	5482	5589
B	7684	8090	8139

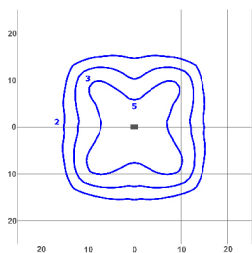
* Initial delivered lumens at 25°C (77°F). Actual production yield may vary between -4 and +10% of initial delivered lumens

5ME - Type V Medium



cd/klm
 C0 - C180 C90 - C270 C135 - C315

Test Report #: PL07327-001



lux
 SMI-E-3-5ME-B-40K
 Mounting Height: 6m

LUMEN OUTPUT - 5ME (Type V Medium)			
Input Power Designator	3000K	4000K	5700K
		Initial Delivered Lumens*	Initial Delivered Lumens*
A	3861	4710	4942
B	5178	6317	6628

* Initial delivered lumens at 25°C (77°F). Actual production yield may vary between -4 and +10% of initial delivered lumens

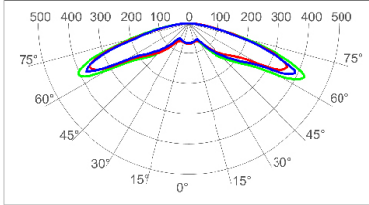
Square LED High Output Series



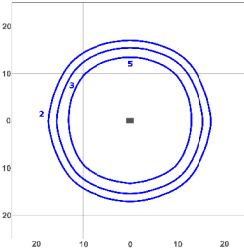
Photometry

All published luminaire photometric testing performed by an external certified ISO 17025 laboratory.
To obtain an IES file specific to your project consult: www.creelighting-europe.com

5SH - Type V Medium



cd/klm
 — C0 - C180 — C90 - C270 — C45 - C225



lux
 SMI-E-3-5SH-B-40K
 Mounting Height: 6m

Test Report #: PL07330-001

LUMEN OUTPUT - 5SH (Type V Medium)			
Input Power Designator	3000K	4000K	5700K
		Initial Delivered Lumens*	Initial Delivered Lumens*
A	4334	5288	5548
B	5910	7210	7564

* Initial delivered lumens at 25°C (77°F). Actual production yield may vary between -4 and +10% of initial delivered lumens

© 2023 Cree Lighting Europe S.p.A., a Company of ENERGY EFFICIENT LIGHTING GROUP. All rights reserved.
For informational purposes only. Content is subject to change. Cree® and Cree Lighting® logo are registered trademarks of SMART Global Holdings, Inc.