



StreetMaster M

StreetMaster M - LED Street/Area Luminaire

Rev.Date : 02/04/2025

Product Description

The StreetMaster Series is designed following principles of unparalleled energy efficiency, environmental sustainability, innovative modular design, extended service life and rapid installation. This series represents the optimal lighting solution for any context, offering a modular system that includes two product sizes, a wide range of optics, options for dimming autonomous luminous flux and Zhaga connectivity.

The innovative adjustable joint allows mounting on 60mm outer diameter poles or stands, with an adjustability of 5° increments. Tilt adjustment is easy, made from the outside without the need to open the cover. Due to its high efficacy, the StreetMaster Series is designed to replace even first-generation LED lighting fixtures, ensuring a quick return on investment.

The design also reflects the 'less is more' philosophy, emphasizing simplicity and effectiveness.

Applications: Urban and suburban roads, walkways, and parking lots.

Performance Summary

Efficacy: up to 180lm/W

Initial Color Consistency: 4 Step SDCM

System Lumen Output: Up to 17000 Lm

Limited Warranty: 5 years on luminaire (10 years optional*)

*Extended warranty (up to 10 years) available on approved projects. Contact ADLT for further information.



Ordering Information

Eg: SPMA-2-K10-D-120-407-^ -A-S-FX-S-S-00

SPMA	- 2	- K10	- D	- 120	- 407	- ^	- A	- S	- FX	- S	- S	- 00
Product	Mounting	Optic	Light engine	Lumen output	CCT	Insulation Class	Voltage	Finish	Option	Variant	Protection	Cable Length
SPMA StreetMaster Medium	2 Horiz/vert tenon 60/42mm OD	K07 NanoComfort Narrow Street	D Up to 12700lm	110 - 11000lm 120 - 12000lm 127 - 12700lm	227 2200K CRI70	+ Class I	A 220-240V	S Silver	FX Fixed Output	S No socket/ No sensor	S By Driver	00 No cable
SUMA StreetMaster Medium LCU	3 Vert tenon 76mm OD	K08 NanoComfort Narrow Street	E Up to 17000lm	130 - 13000lm 140 - 14000lm 150 - 15000lm 160 - 16000lm 170 - 17000lm	277 2700K CRI70	^ Class II			M1 Virtual Midnight 1	Z* Zhaga D4i socket	SF** Standard +Fuse	A1 Exit cable 1 m
	4 Extended tilt range 60/42mm OD	K09 NanoComfort Medium Street			307 3000K CRI70				M2 Virtual Midnight 2	N Nema socket	U 10 kV	A6 Exit cable 6 m
	5 Extended tilt range 76mm OD	K10 NanoComfort Medium Street			407 4000K CRI70						UF** 10 kV +Fuse	A8 Exit cable 8 m
		K11 NanoComfort Medium Street										0A Exit cable 10 m
		K12 NanoComfort Broad Street										2A Exit cable 12 m
		100 Medium Street										
		125 Broad Street										
		150 Wide Street										
		200 Extra Wide Street										
		P05 Pedestrian Narrow										
		P25 Pedestrian Extra Wide										

*Z variant only available up to 15000 lm **Fuseholder with 5x20 8A rit. fuse on the input (line only)

Standard cable cross-section 1mm². Other cross-sections available on request.

DarkSky Approved with a CCT of 3000K or lower and mounting options 2 and 3 only.

Front, side & rear light shield accessories available.

ADAPTER	
KIT-SPS-AP76-V0	Fitter kit to mount to 76mm tenon

LIGHT SHIELDS	
SPS-BLSB	Front shield
SPM-BLSR	Right shield
SPM-BLSR	Left shield
SPS-BLSB	Back shield

StreetMaster M

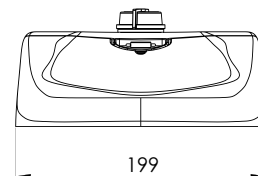
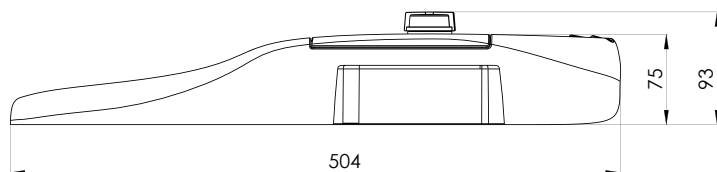
StreetMaster M - LED Street/Area Luminaire



CREE LIGHTING

Rev.Date : 02/04/2025

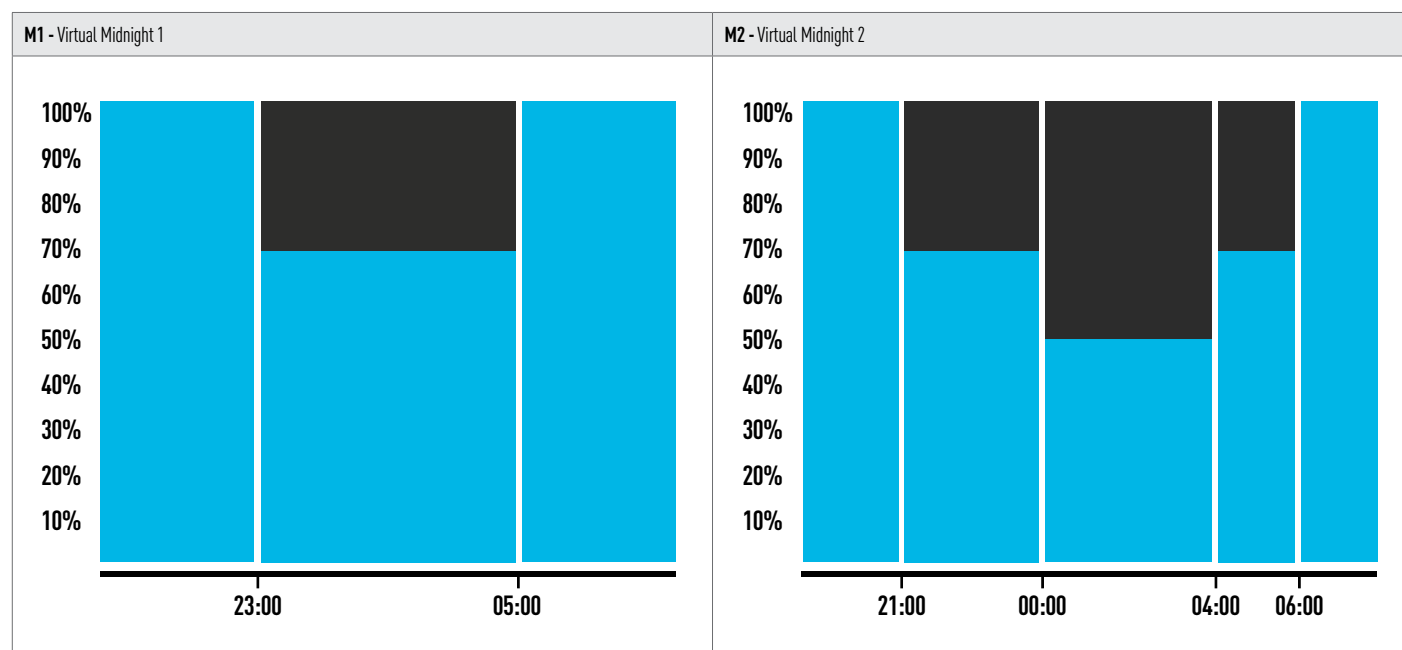
Dimensions



Light engine	System Lumen Output (lm)	Power (W)	Efficacy (lm/W)
D	11026	62,7	176
	12027	68,2	176
	12778	72,4	176
E	13033	71,9	181
	14034	77,4	181
	15035	83,0	181
	16036	88,5	181
	17037	94,2	181

Note¹: Data above for 4000K CRI70. Conversion factor for 3000K CRI70 = 0.95 | 2700K CRI70 = 0.91 | 2200K CRI70 = 0.79

Note²: Lumen and power data are typical values at 25°C ambient temperature. These values are subject to a tolerance of $\pm 7\%$.
In order to facilitate product updates, Cree Lighting Europe reserves the right to make changes without prior notice



Virtual Midnight

This independent stand-alone system requires no additional wiring; it is integrated into the luminaire and requires no intervention from the installer. A system that is reliable and easy to set, as the adjustment follows pre-defined steps. Virtual Midnight offers excellent results in terms of savings: the device updates automatically according to the system's switch-on and switch-off times. Most energy saving regulations - GPP and the like - require maximum light output during the first and last hours of operation, which are generally the busiest, and a reduction of at least 30% during the central hours of the night. Through a self-learning process, the microprocessor determines the central point - the so-called virtual midnight - between the time the system is switched on (sunset) and the time it is switched off (dawn). The process is carried out over three consecutive days with regular on/off cycles. Virtual midnight is the reference point for switching the setback intervals according to the desired profile.



Advanced Lighting Technologies Australia Inc
Advanced Lighting Technologies New Zealand Ltd

Australia
New Zealand

+61 3 9800 5600
+64 9 415 6332

www.adlt.com.au
www.adlt.co.nz

StreetMaster M

StreetMaster M - LED Street/Area Luminaire



CREE LIGHTING

Rev.Date : 02/04/2025

FEATURES

- Available with **NanoComfort®** precision optical system
- System lumen output up to 17000lm
- Zhaga Book 15 compliant LED module efficiency (excluding optical system): ≥ 220 lm/W
- Luminaire efficiency (including optical losses): up to 180 lm/W
- CCT: 4000K Ra70, 3000K Ra70, 2700K Ra70, 2200K Ra70
- CRI Standard min. 70
- Initial Chromatic Selection: ≤ 4 -Step MacAdam ellipse or $\Delta u'v' \leq 0.003$ (LM80:08)
- Luminous flux maintenance factor: L90B10 $> 100,000$ hours $T_a = 25^\circ\text{C}$
- Optical compartment and wiring compartment ingress protection: IP66 (IEC 60529)
- Optical compartment and wiring compartment impact resistance: IK09 (EN 62262)
- Overvoltage protection: up to 10kV CM/DM according to EN 61000-4-5 and EN 61547
- Driver equipped with over-temperature protection for optimal performance and safety
- Power factor: up to 0.98 at full load
- Operating temperature: -40°C up to $+50^\circ\text{C}$
- Control options: Virtual Midnight, D4i
- Available with fuse, 20mm Zhaga Book 18 connector and NEMA socket
- Backlight control accessory available on request for selected lenses
- Front, side & rear light shield accessories available
- SPD with LED fault indicator (Standard in class I, available on request in class II)
- Weight: 4 kg
- Lateral windage area: 0.03 m^2 , maximum windage area: 0.09 m^2

CONSTRUCTION AND MATERIALS

- Die-cast aluminum body EN 47100 (copper content $< 0.7\%$). Aluminum alloy EN AB 44300 (copper content $< 0.1\%$) available as an option.
- Power supply compartment accessible without the use of tools
- Ultra-clear 4mm tempered glass with anti-reflective coating
- Replaceable PMMA lenses
- Replaceable LED board equipped with ESD protection
- Cable type H05RN-F (Cable length up to 15m)
- Easy installation: wiring compartment accessible without tools, no need to open it for installation if the fixture is configured with protruding cable
- Convenience in routine and extraordinary maintenance: accessible power supply compartment; lenses and LEDs easily removable and replaceable using a single tool
- Luminaire assembled without the use of adhesives, fully demountable and recyclable
- Fixed mounting on 42/60/76mm diameter vertical poles or stands and adjustable mounting in 5° increments (from 0° to -15°) on 42/60mm horizontal tenons. Accessory available to extend the tilt range to $-20^\circ/+20^\circ$.

WARRANTY AND CERTIFICATIONS

- Warranty: 5 years / 10 years on request*
- CE / CB / RoHS / ENEC / ENEC+
- DarkSky Approved (2200K, 2700K and 3000K CCTs only)
- Compliant to: EN 60598-1, EN 60598-2-3
- TM66 rated with an excellent circularity
- Meets CAM requirements
- Exempt risk class (EN 62471)
- Compliant with vibration test in accordance with IEC 60068-2-6 severity levels
- Lead-free powder coatings with excellent exterior durability, conforms to the requirements:
 - Adhesion - test compliant with ISO 2409
 - Salt spray - test NSS compliant with ISO 9227
 - Accelerated Weathering - test UV compliant with ISO 16474-3 (ex ISO 11507)
 - Constant humidity - test compliant with ISO 6270-1

*Extended warranty (up to 10 years) available on approved projects. Contact ADLT for further information.



Advanced Lighting Technologies Australia Inc
Advanced Lighting Technologies New Zealand Ltd

Australia
New Zealand

+61 3 9800 5600
+64 9 415 6332

www.adlt.com.au
www.adlt.co.nz

StreetMaster M

StreetMaster M - LED Street/Area Luminaire



Advanced
LIGHTING TECHNOLOGIES

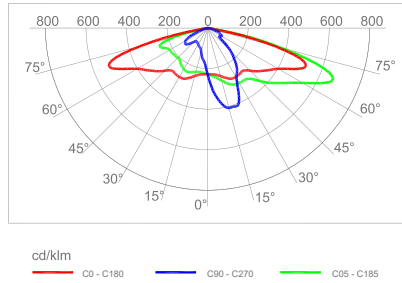
CREE LIGHTING

Rev.Date : 02/04/2025

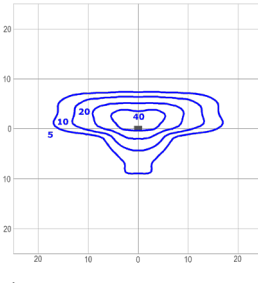
Photometry

All published luminaire photometric testing performed by an external certified ISO 17025 laboratory.
To obtain an IES file specific to your project consult: www.creelighting-europe.com

K07 - Narrow Street

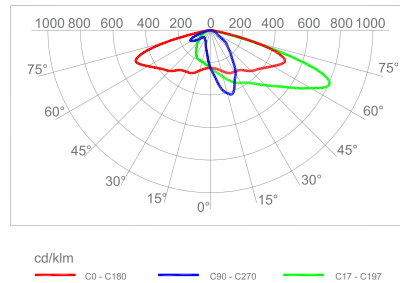


Luminous Intensity Class G*3
Glare Index D6

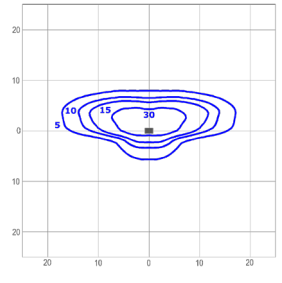


SPSA-2-K07-C-80-407
Mounting Height: 6m

K08 - Narrow Street

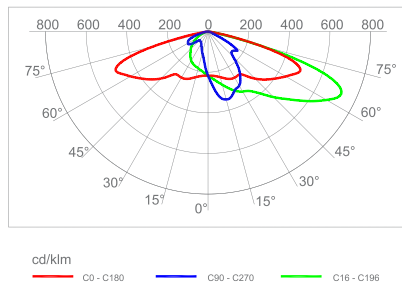


Luminous Intensity Class G*3
Glare Index D5

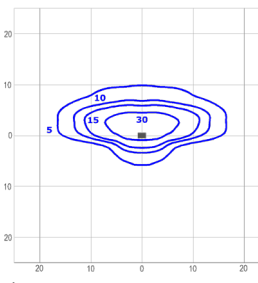


SPSA-2-K08-C-80-407
Mounting Height: 6m

K09 - Medium Street

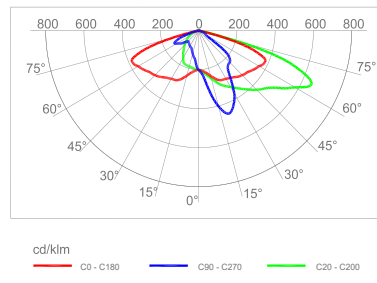


Luminous Intensity Class G*3
Glare Index D5

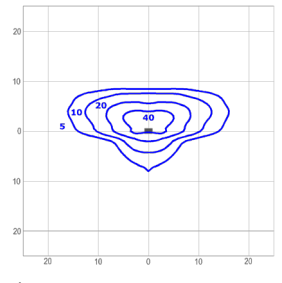


SPSA-2-K09-C-80-407
Mounting Height: 6m

K10 - Medium Street

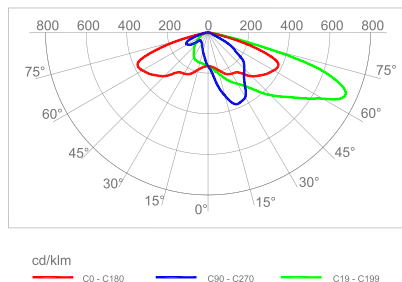


Luminous Intensity Class G*3
Glare Index D5

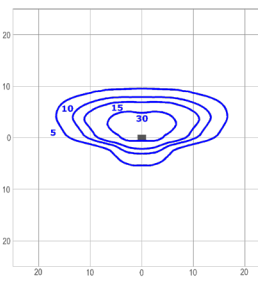


SPSA-2-K10-C-80-407
Mounting Height: 6m

K11 - Medium Street

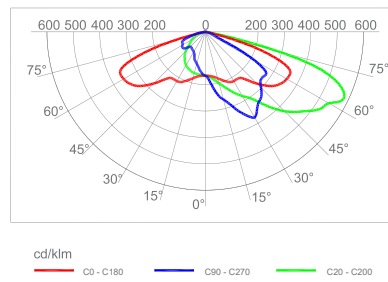


Luminous Intensity Class G*3
Glare Index D5

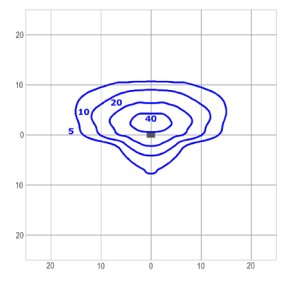


SPSA-2-K11-C-80-407
Mounting Height: 6m

K12 - Broad Street

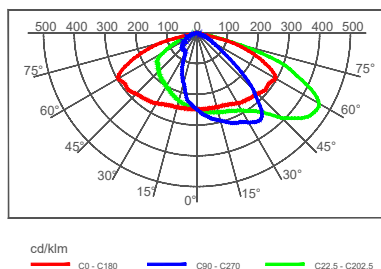


Luminous Intensity Class G*3
Glare Index D5

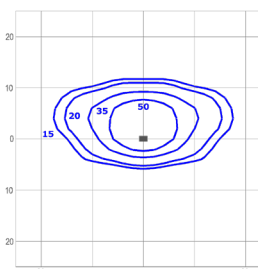


SPSA-2-K12-C-80-407
Mounting Height: 6m

100 - Medium Street

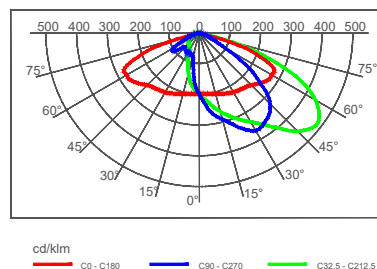


Luminous Intensity Class G*4
Glare Index D5

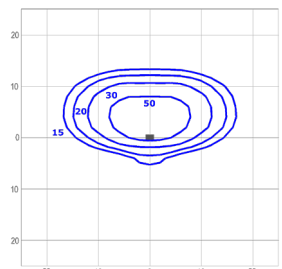


SPSA-2-100-C-80-407
Mounting Height: 6m

125 - Broad Street



Luminous Intensity Class G*4
Glare Index D6



SPSA-2-125-C-80-407
Mounting Height: 6m



Advanced Lighting Technologies Australia Inc
Advanced Lighting Technologies New Zealand Ltd

Australia
New Zealand

+61 3 9800 5600
+64 9 415 6332

www.adlt.com.au
www.adlt.co.nz

StreetMaster M

StreetMaster M - LED Street/Area Luminaire



Advanced
LIGHTING TECHNOLOGIES

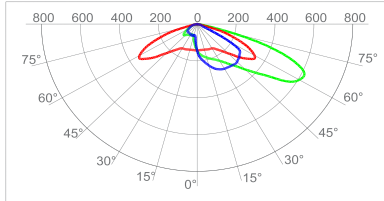
CREE LIGHTING

Rev.Date : 02/04/2025

Photometry

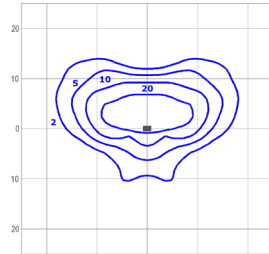
All published luminaire photometric testing performed by an external certified ISO 17025 laboratory.
To obtain an IES file specific to your project consult: www.creelighting-europe.com

150 - Wide Street



cd/klm
C0 - C180 C90 - C270 C27.5 - C207.5

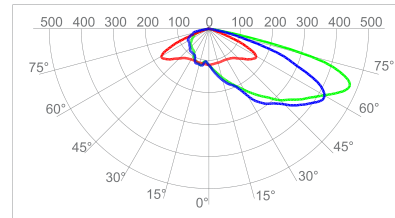
Luminous Intensity Class G*3
Glare Index D5



lux

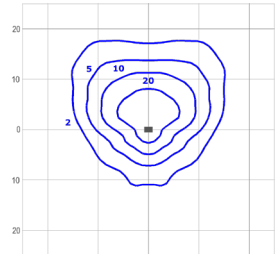
SPSA-2-150-C-80-407
Mounting Height: 6m

200 - Extra Wide Street



cd/klm
C0 - C180 C90 - C270 C55 - C235

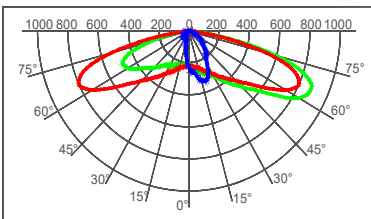
Luminous Intensity Class G*3
Glare Index D5



lux

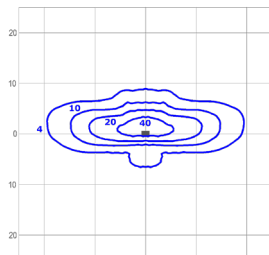
SPSA-2-200-C-80-407
Mounting Height: 6m

P05 - Pedestrian Narrow



cd/klm
C0 - C180 C90 - C270 C9 - C189

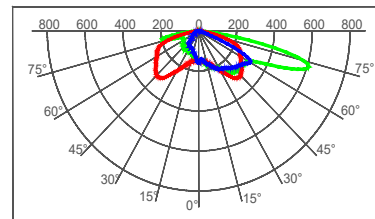
Luminous Intensity Class G*1
Glare Index D4



lux

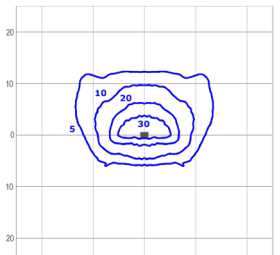
SPSA-2-P05-C-80-407
Mounting Height: 6m

P25 - Pedestrian Extra Wide



cd/klm
C0 - C180 C90 - C270 C45 - C225

Luminous Intensity Class G*0
Glare Index D4



lux

SPSA-2-P25-C-80-407
Mounting Height: 6m

© 2025 Cree Lighting Europe S.p.A. All rights reserved. For informational purposes only.
Content is subject to change. Patent www.creelighting.com/patents. Cree® and the Cree logo are registered trademarks and the Cree SmartCast Technology Logo is a trademark of Cree, Inc.



Advanced Lighting Technologies Australia Inc
Advanced Lighting Technologies New Zealand Ltd

Australia
New Zealand

+61 3 9800 5600
+64 9 415 6332

www.adlt.com.au
www.adlt.co.nz