



# StreetMaster S

StreetMaster S - LED Street/Area Luminaire

Rev.Date : 02/04/2025

## Product Description

The StreetMaster Series is designed following principles of unparalleled energy efficiency, environmental sustainability, innovative modular design, extended service life and rapid installation. This series represents the optimal lighting solution for any context, offering a modular system that includes two product sizes, a wide range of optics, options for dimming autonomous luminous flux and Zhaga connectivity.

The innovative adjustable joint allows mounting on 60mm outer diameter poles or stands, with an adjustability of 5° increments. Tilt adjustment is easy, made from the outside without the need to open the cover. Due to its high efficacy, the StreetMaster Series is designed to replace even first-generation LED lighting fixtures, ensuring a quick return on investment.

The design also reflects the 'less is more' philosophy, emphasizing simplicity and effectiveness.

**Applications:** Urban and suburban roads, walkways, and parking lots.

## Performance Summary

**Efficacy:** up to 180lm/W

**Initial Color Consistency:** 4 Step SDCM

**System Lumen Output:** Up to 10000 lm

**Limited Warranty:** 5 years on luminaire (10 years optional\*)

\*Extended warranty (up to 10 years) available on approved projects. Contact ADLT for further information.



## Ordering information

Eg: SPSA-2-K10-B-60-407-^ -A-S-FX-S-S-00

SPSA	-	2	-	K10	-	B	-	60	-	407	-	^	-	A	-	S	-	FX	-	S	-	S	-	00
Product		Mounting		Optic		Light engine		Lumen output		CCT		Insulation Class		Voltage		Finish		Option		Variant		Protection		Cable Length
SPSA StreetMaster Small	-	2 Horiz/vert tenon 60/42mm OD	-	K07 NanoComfort Narrow Street	-	A Up to 4200lm	-	10 - 1000lm 20 - 2000lm 30 - 3000lm 36 - 3600lm 42 - 4200lm	-	227 2200K CRI70	-	+ Class I ^ Class II	-	A 220-240V	-	S Silver	-	FX Fixed Output	-	S No socket/ No sensor	-	S By Driver	-	00 No cable
SUSA StreetMaster Small LCu	-	3 Vert tenon 76mm OD	-	K08 NanoComfort Narrow Street	-	B Up to 7000lm	-	50 - 5000lm 55 - 5500lm 60 - 6000lm 65 - 6500lm 70 - 7000lm	-	277 2700K CRI70	-		-		-		-	M1 Virtual Midnight 1	-	Z Zhaga D4i socket	-	SF* Standard +Fuse	-	A1 Exit cable 1 m
	-	4 Extended tilt range 60/42mm OD	-	K09 NanoComfort Medium Street	-		-		-	307 3000K CRI70	-		-		-		-	M2 Virtual Midnight 2	-	N Nema socket	-	U 10 kV	-	A6 Exit cable 6 m
	-	5 Extended tilt range 76mm OD	-	K10 NanoComfort Medium Street	-	C Up to 10000lm	-	80 - 8000lm 90 - 9000lm 100 - 10000lm	-	407 4000K CRI70	-		-		-		-		-		-	UF* 10 kV +Fuse	-	A8 Exit cable 8 m
	-		-	K11 NanoComfort Medium Street	-		-		-		-		-		-		-		-		-		-	0A Exit cable 10 m
	-		-	K12 NanoComfort Broad Street	-		-		-		-		-		-		-		-		-		-	2A Exit cable 12 m
	-		-	100 Medium Street	-		-		-		-		-		-		-		-		-		-	
	-		-	125 Broad Street	-		-		-		-		-		-		-		-		-		-	
	-		-	150 Wide Street	-		-		-		-		-		-		-		-		-		-	
	-		-	200 Extra Wide Street	-		-		-		-		-		-		-		-		-		-	
	-		-	P05 Pedestrian Narrow	-		-		-		-		-		-		-		-		-		-	
	-		-	P25 Pedestrian Extra Wide	-		-		-		-		-		-		-		-		-		-	

\*Fuseholder with 5x20 8A rit. fuse on the input (line only)

Standard cable cross-section 1mm². Other cross-sections available on request.

DarkSky Approved with a CCT of 3000K or lower and mounting options 2 and 3 only.

Front, side & rear light shield accessories available.

ADAPTER	
KIT-SPS-AP76-V0	Fitter kit to mount to 76mm tenon

LIGHT SHIELDS	
SPS-BLSB	Front shield
SPS-BLSB	Right shield
SPS-BLSB	Left shield
SPS-BLSB	Back shield



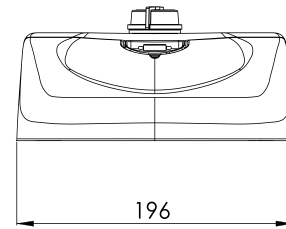
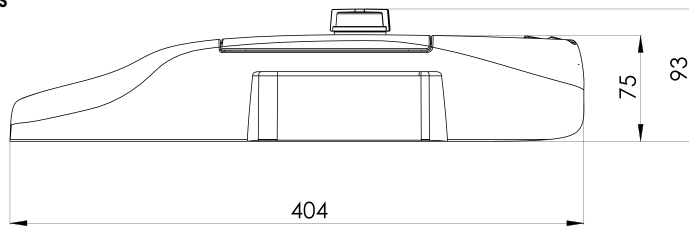


# StreetMaster S

StreetMaster S - LED Street/Area Luminaire

Rev.Date : 02/04/2025

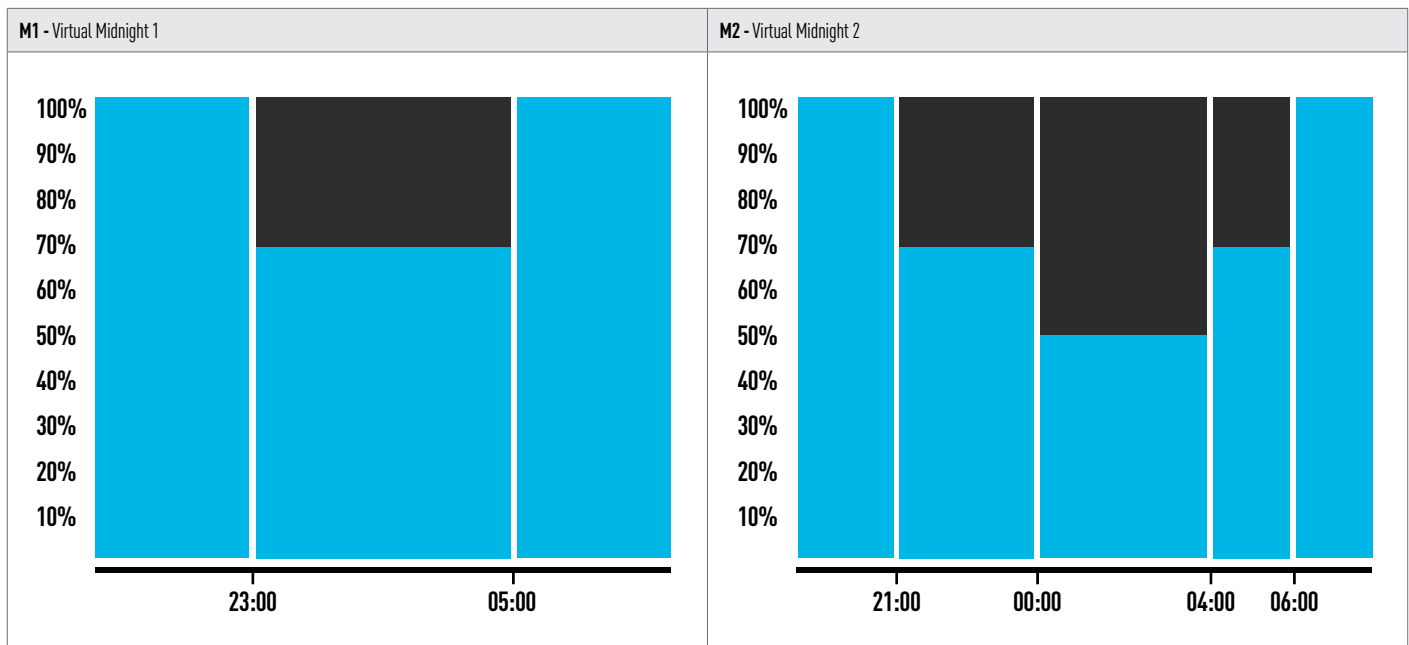
## Dimensions



Light engine	System Lumen Output (lm)	Power (W)	Efficacy (lm/W)
A	1018	7,1	143
	2030	13,5	150
	3000	18,7	160
	3633	21,9	166
	4224	24,9	170
B	5053	30,4	166
	5541	33,1	167
	6029	35,7	169
	6517	38,3	170
	7005	41,0	171
C	7981	48,8	164
	9039	55,1	164
	10015	60,9	164

Note<sup>1</sup>: Data above for 4000K CRI70. Conversion factor for 3000K CRI70 = 0.95 | 2700K CRI70 = 0.91 | 2200K CRI70 = 0.79

Note<sup>2</sup>: Lumen and power data are typical values at 25°C ambient temperature. These values are subject to a tolerance of ± 7%.  
In order to facilitate product updates, Cree Lighting Europe reserves the right to make changes without prior notice



## Virtual Midnight

This independent stand-alone system requires no additional wiring; it is integrated into the luminaire and requires no intervention from the installer. A system that is reliable and easy to set, as the adjustment follows pre-defined steps. Virtual Midnight offers excellent results in terms of savings: the device updates automatically according to the system's switch-on and switch-off times. Most energy saving regulations - GPP and the like - require maximum light output during the first and last hours of operation, which are generally the busiest, and a reduction of at least 30% during the central hours of the night. Through a self-learning process, the microprocessor determines the central point - the so-called virtual midnight - between the time the system is switched on (sunset) and the time it is switched off (dawn). The process is carried out over three consecutive days with regular on/off cycles. Virtual midnight is the reference point for switching the setback intervals according to the desired profile.

# StreetMaster S

StreetMaster S - LED Street/Area Luminaire

Rev.Date : 02/04/2025

## FEATURES

- Available with **NanoComfort®** precision optical system
- System lumen output up to 10000lm
- Zhaga Book 15 compliant LED module efficiency (excluding optical system):  $\geq 220$  lm/W
- Luminaire efficiency (including optical losses): up to 180 lm/W
- CCT: 4000K Ra70, 3000K Ra70, 2700K Ra70, 2200K Ra70
- CRI Standard min. 70
- Initial Chromatic Selection:  $\leq 4$ -Step MacAdam ellipse or  $\Delta u'v' \leq 0.003$  (LM80:08)
- Luminous flux maintenance factor: L90B10 >100,000 hours Ta=25°C
- Optical compartment and wiring compartment ingress protection: IP66 (IEC 60529)
- Optical compartment and wiring compartment impact resistance: IK10 (EN 62262)
- Overvoltage protection: up to 10kV CM/DM according to EN 61000-4-5 and EN 61547
- Driver equipped with over-temperature protection for optimal performance and safety
- Power factor: up to 0.98 at full load
- Operating temperature: -40°C up to +50°C
- Control options: Virtual Midnight, D4i
- Available with fuse, 20mm Zhaga Book 18 connector and NEMA socket
- Backlight control accessory available on request for selected lenses
- Front, side & rear light shield accessories available
- SPD with LED fault indicator (Standard in class I, available on request in class II)
- Weight: 3.2 kg
- Lateral windage area: 0.03 m<sup>2</sup>, maximum windage area: 0.07 m<sup>2</sup>

## CONSTRUCTION AND MATERIALS

- Die-cast aluminum body EN 47100 (copper content <0.7%). Aluminum alloy EN AB 44300 (copper content <0.1%) available as an option.
- Power supply compartment accessible without the use of tools
- Ultra-clear 4mm tempered glass with anti-reflective coating
- Replaceable PMMA lenses
- Replaceable LED board equipped with ESD protection
- Cable type H05RN-F (Cable length up to 15m)
- Easy installation: wiring compartment accessible without tools, no need to open it for installation if the fixture is configured with protruding cable
- Convenience in routine and extraordinary maintenance: accessible power supply compartment; lenses and LEDs easily removable and replaceable using a single tool
- Luminaire assembled without the use of adhesives, fully demountable and recyclable
- Fixed mounting on 42/60/76mm diameter vertical poles or stands and adjustable mounting in 5° increments (from 0° to -15°) on 42/60mm horizontal tenons. Accessory available to extend the tilt range to -20°/+20°.

## WARRANTY AND CERTIFICATIONS

- Warranty: 5 years / 10 years on request
- CE / CB / RoHS / ENEC / ENEC+
- DarkSky Approved (2200K, 2700K and 3000K CCTs only)
- Compliant to: EN 60598-1, EN 60598-2-3
- TM66 rated with an excellent circularity
- Meets CAM requirements
- Exempt risk class (EN 62471)
- Compliant with vibration test in accordance with IEC 60068-2-6 severity levels
- Lead-free powder coatings with excellent exterior durability, conforms to the requirements:
  - Adhesion - test compliant with ISO 2409
  - Salt spray - test NSS compliant with ISO 9227
  - Accelerated Weathering - test UV compliant with ISO 16474-3 (ex ISO 11507)
  - Constant humidity - test compliant with ISO 6270-1

\*Extended warranty (up to 10 years) available on approved projects. Contact ADLT for further information.



# StreetMaster S

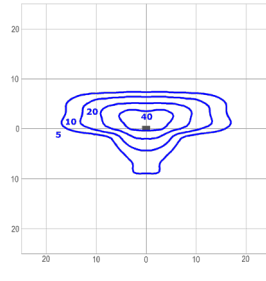
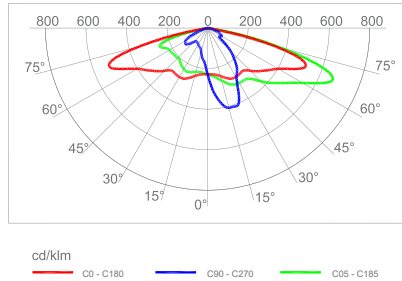
StreetMaster S - LED Street/Area Luminaire

Rev.Date : 02/04/2025

## Photometry

All published luminaire photometric testing performed by an external certified ISO 17025 laboratory.  
To obtain an IES file specific to your project consult: [www.creelighting-europe.com](http://www.creelighting-europe.com)

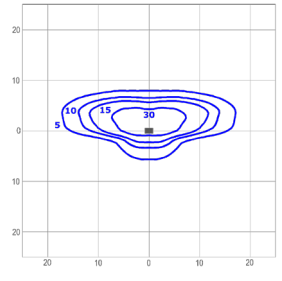
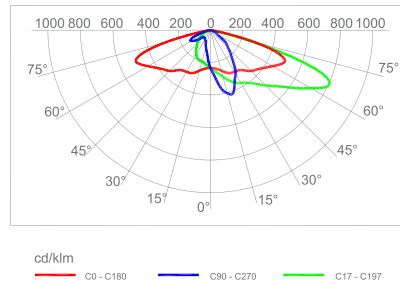
### K07 - Narrow Street



Luminous Intensity Class G\*3  
Glare Index D6

SPSA-2-K07-C-80-407  
Mounting Height: 6m

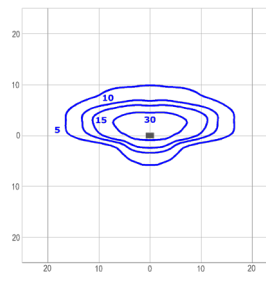
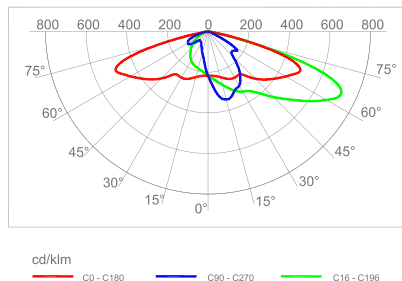
### K08 - Narrow Street



Luminous Intensity Class G\*3  
Glare Index D5

SPSA-2-K08-C-80-407  
Mounting Height: 6m

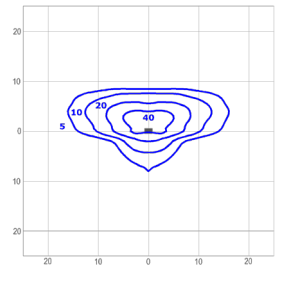
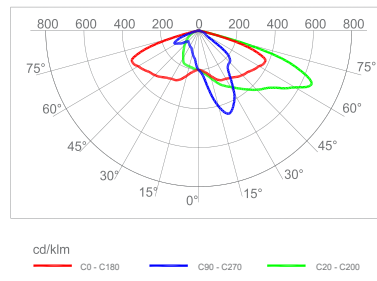
### K09 - Medium Street



Luminous Intensity Class G\*3  
Glare Index D5

SPSA-2-K09-C-80-407  
Mounting Height: 6m

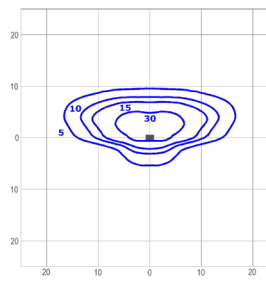
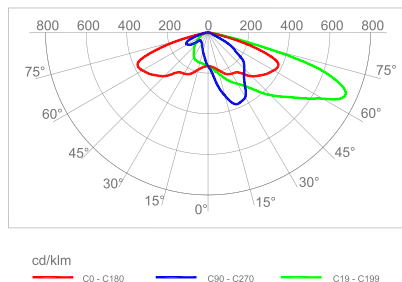
### K10 - Medium Street



Luminous Intensity Class G\*3  
Glare Index D5

SPSA-2-K10-C-80-407  
Mounting Height: 6m

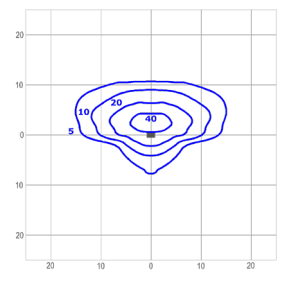
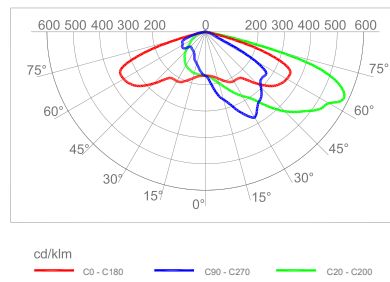
### K11 - Medium Street



Luminous Intensity Class G\*3  
Glare Index D5

SPSA-2-K11-C-80-407  
Mounting Height: 6m

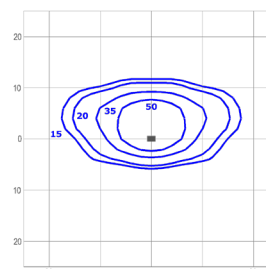
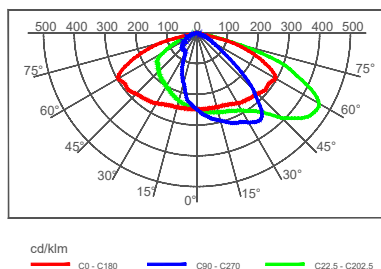
### K12 - Broad Street



Luminous Intensity Class G\*3  
Glare Index D5

SPSA-2-K12-C-80-407  
Mounting Height: 6m

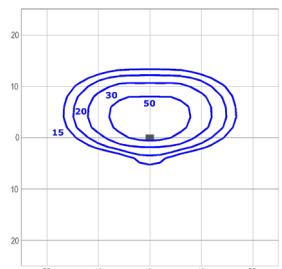
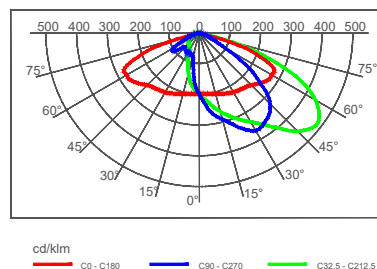
### 100 - Medium Street



Luminous Intensity Class G\*4  
Glare Index D5

SPSA-2-100-C-80-407  
Mounting Height: 6m

### 125 - Broad Street



Luminous Intensity Class G\*4  
Glare Index D6

SPSA-2-125-C-80-407  
Mounting Height: 6m



# StreetMaster S

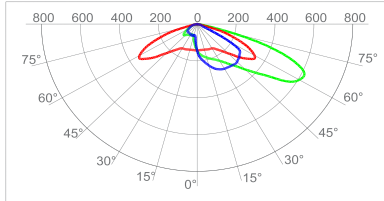
StreetMaster S - LED Street/Area Luminaire

Rev.Date : 02/04/2025

## Photometry

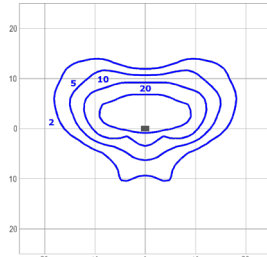
All published luminaire photometric testing performed by an external certified ISO 17025 laboratory.  
To obtain an IES file specific to your project consult: [www.creelighting-europe.com](http://www.creelighting-europe.com)

### 150 - Wide Street



cd/klm  
C0 - C180 C90 - C270 C27.5 - C207.5

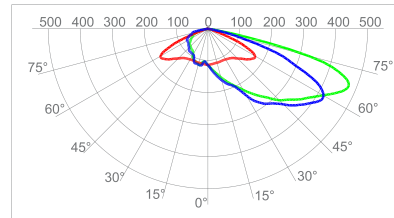
Luminous Intensity Class G\*3  
Glare Index D5



lux

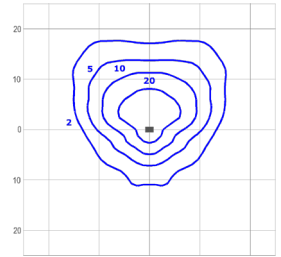
SPSA-2-150-C-80-407  
Mounting Height: 6m

### 200 - Extra Wide Street



cd/klm  
C0 - C180 C90 - C270 C55 - C235

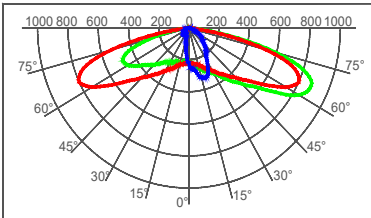
Luminous Intensity Class G\*3  
Glare Index D5



lux

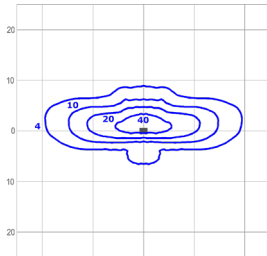
SPSA-2-200-C-80-407  
Mounting Height: 6m

### P05 - Pedestrian Narrow



cd/klm  
C0 - C180 C90 - C270 C9 - C189

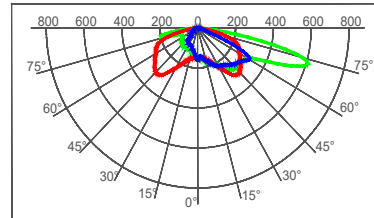
Luminous Intensity Class G\*1  
Glare Index D4



lux

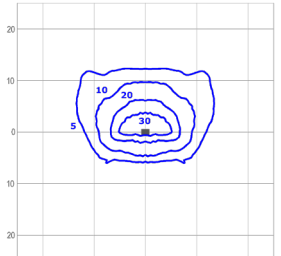
SPSA-2-P05-C-80-407  
Mounting Height: 6m

### P25 - Pedestrian Extra Wide



cd/klm  
C0 - C180 C90 - C270 C45 - C225

Luminous Intensity Class G\*0  
Glare Index D4



lux

SPSA-2-P25-C-80-407  
Mounting Height: 6m