

BASIC LINE

LIGHT FOR PROFESSIONALS

5
YEARS
WARRANTY

FOR
INDUSTRIAL
USE

SIMPLE
HANDLING

1 MANUFACTURER 4 SEGMENTS OVER 4000 LUMINAIRES

THE RIGHT LUMINAIRE FOR EVERY REQUIREMENT

LARGEST WET ROOM RANGE IN EUROPE

A luminaire range from light for every day use up to tailor-made individual solutions for extreme demands. A portfolio for all requirements.

ECONOMICAL & EFFICIENT

In terms of purchase and maintenance. PRACHT luminaires stand for high efficiency at the best price-performance ratio.

BRAND QUALITY

100 years of experience make PRACHT the first port of call for damp-proof luminaires

GREEN INNOVATION

Transparent sustainability and energy efficiency - Long-life components, recycled materials (REMADE), easy to replace exchangeability of electronics (REUSE) and a high level of material expertise are the hallmarks of PRACHT's sustainable offering

ECO LINE LIGHT FOR EVERYDAY LIFE

**ECONOMIC.
EASY.
EFFICIENT.**

Full-LED and RETRO-FIT luminaire in one unbeatable price-performance ratio:

- Cellars
- Corridors
- Technical rooms
- Garages
- Warehouse



BASIC LINE LIGHT FOR PROFESSIONALS



High-quality, industrial-grade luminaires for easy installation

- Unprotected outdoor areas
- Production areas
- Agricultures
- Logistics
- Underground garages
- Warehouses
- Pits
- Car washes
- Corridors
- Side rooms



PRO LINE LIGHT FOR THE EXTREME



Industrial luminaires of the highest quality, durability and robustness. Customizable depending on individual requirements. Warranty 5 Years+

- Demanding industrial sectors such as food & beverages
- Potentially explosive areas
- Chemical & noxious gas contaminated environments
- High & low temperatures
- Vandalism protected
- Electroplatings
- Transportation companies

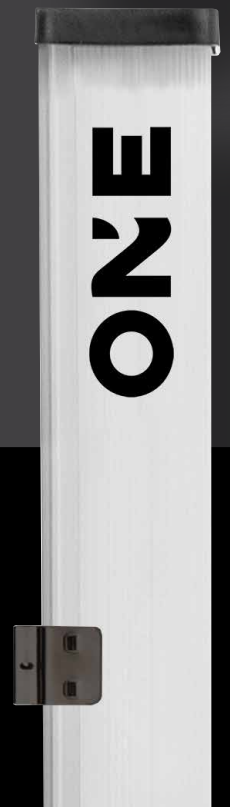


ONECONNECT LIGHTING SYSTEMS

**STANDARD
SYSTEM**

ONE CONNECT, made from 99% recycled material, turns individual luminaires into a variety of lighting systems and shapes

- Reception & recreation areas
- Offices
- Garages
- Cellars
- Corridors & hallways
- Technical rooms & workshops



BASIC LINE

LIGHT FOR PROFESSIONALS

**5
YEARS
WARRANTY**

High quality, good light and simple installation - proven properties that characterise the industrial-grade PRACHT BASIC LINE.

The various luminaire are ideally suitable for a wide range of possible applications - from car parks and the optimum lighting of high-bay warehouses to reliable use in agriculture and in unprotected outdoor areas. The PRACHT BASIC LINE stands for brand quality with a PRACHT warranty of 5 years and an excellent efficiency.

INDOOR:



LUNA BL

IDEAL FOR

- CORRIDORS
- CELLARS
- INDUSTRY
- PARKING GARAGES
- PRODUCTION

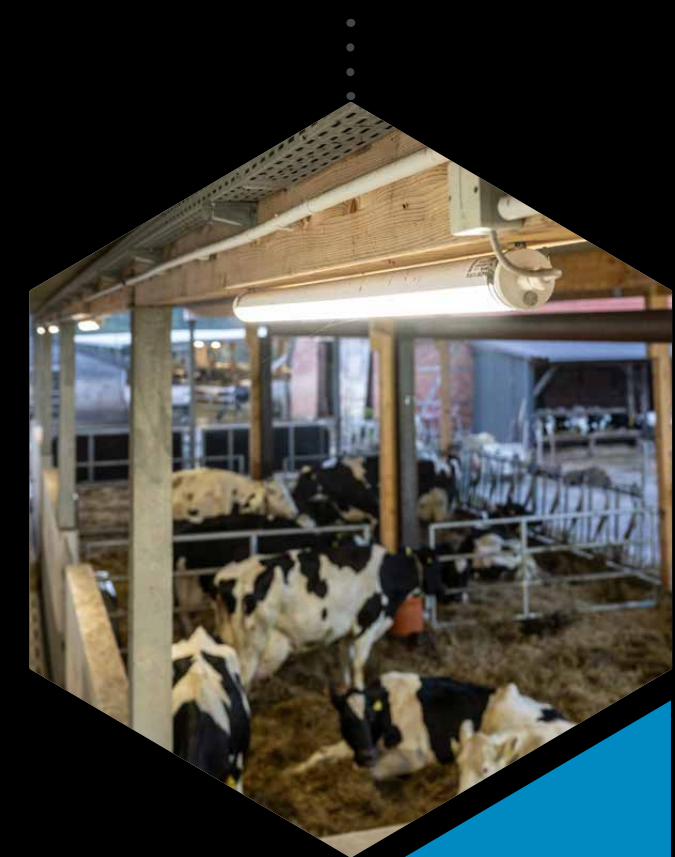


KATLA BL

IDEAL FOR

- PARKING GARAGES
- WAREHOUSE
- TECHNICAL ROOMS
- CELLARS
- WORKSHOPS

OUTDOOR:



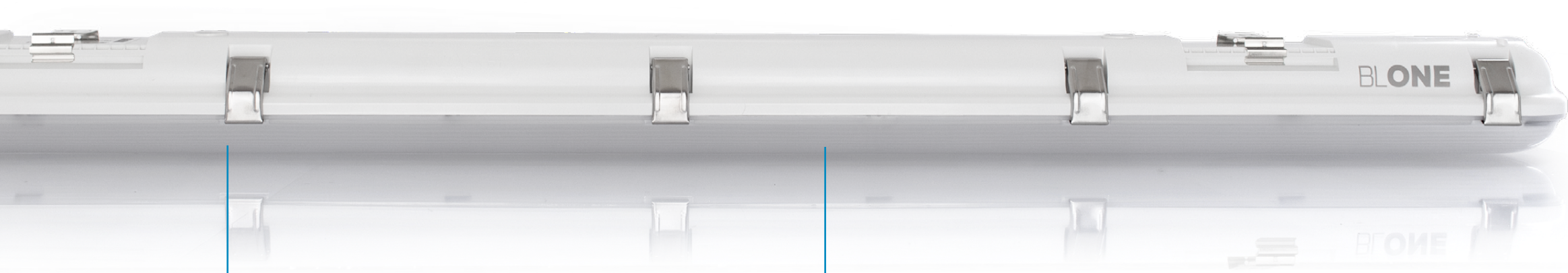
TUBIS BL

IDEAL FOR

- UNPROTECTED OUTDOOR AREAS
- AGRICULTURES
- SWIMMING POOLS
- CHEMICALLY CONTAMINATED ENVIRONMENTS

LUNA BL ONE

THE FIRST **DIFFUSER LIGHT**
MADE FROM UP TO **98 % RECYCLATE**



SUSTAINABLE LIGHT FOR ALL

Ready for the requirements of the future:
recycled content up to 98%,
efficiency up to 180 lm/W

VERSATILE

Also available as a version with multilumen,
DALI, TW and sensor

- HOUSING** PC recyclate, impact-resistant, IK08, REMADE SCORE 98%.
- COVER** PC recyclate with integrated LED unit.
- SEALS** Non-ageing silicone seals.
- ELECTRICAL COMPONENTS** High-power LED, LED converter.
- ASSEMBLY** Variable fixing distances with PRACHT-KLAMMER-SYSTEM. Suitable for ceiling, wall, pendant and mounting rail installation.
- AREAS OF APPLICATION** Parking garages, industry, production, warehouses, workshops, 1:1 FL replacement.
- EL-CERTIFIED** The LUNA BL is suitable for emergency lighting.

- **SUSTAINABLE - MADE FROM UP TO 98 % RECYCLED MATERIAL**
- **QUICK ASSEMBLY**
- **1:1 EXCHANGE**
- **ENEC**
- **DUST-TIGHT**
- **EL-CERTIFIED**
- **HOMOGENEOUS LIGHT**

FROM EVERYDAY TO EXTREME - THE RIGHT SEGMENT FOR EVERY REQUIREMENT



Protection class I according to EN 60598
Ingress Protection IP65

PRACHT LUNA BL ONE

Single luminaire, color temperature 4000 K, R_a>80, IP65, -20°C ... +40°C

Art.-No.	Execution	Luminous flux	Light distribution	Length	Through-wiring
5800222	DIP SWITCH	1250 - 2500lm	120° breit	600 mm	–
5852222	DIP SWITCH + SENSOR	1250 - 2500lm	120° breit	600 mm	4x1,5 mm²
5800114	ON/OFF	2800 lm	120° breit	1200 mm	–
5800224	DIP SWITCH	2800 - 5400 lm	120° breit	1200 mm	–
5880224	DIP SWITCH + DV	2800 - 5400 lm	120° breit	1200 mm	5x2,5 mm²
5880129	DALI + DV	5400 lm	120° breit	1200 mm	5x2,5 + 2x1,5 mm²
5852224	DIP SWITCH + SENSOR	2800 - 5400 lm	120° breit	1200 mm	4x1,5 mm²
5832129	DALI + SENSOR	2800 - 5400 lm	120° breit	1200 mm	5x1,5 mm²
5800234	DIP SWITCH	5400 - 8400 lm	120° breit	1200 mm	–
5880234	DIP SWITCH + DV	5400 - 8400 lm	120° breit	1200 mm	5x2,5 mm²
5880139	DALI + DV	8400 lm	120° breit	1200 mm	5x2,5 + 2x1,5 mm²
5852234	DIP SWITCH + SENSOR	5400 - 8400 lm	120° breit	1200 mm	4x1,5 mm²
5800115	ON/OFF	3800 lm	120° breit	1500 mm	–
5800225	DIP SWITCH	3800 - 6500 lm	120° breit	1500 mm	–
5880225	DIP SWITCH + DV	3800 - 6500 lm	120° breit	1500 mm	5x2,5 mm²
5880120	DALI + DV	6500 lm	120° breit	1500 mm	5x2,5 + 2x1,5 mm²
5852225	DIP SWITCH + SENSOR	3800 - 6500 lm	120° breit	1500 mm	4x1,5 mm²
5832120	DALI + SENSOR	3800 - 6500 lm	120° breit	1500 mm	5x1,5 mm²
5800235	DIP SWITCH	6500 - 11500 lm	120° breit	1500 mm	–
5880235	DIP SWITCH + DV	6500 - 11500 lm	120° breit	1500 mm	5x2,5 mm²
5880130	DALI + DV	12000 lm	120° breit	1500 mm	5x2,5 + 2x1,5 mm²
5852235	DIP SWITCH + SENSOR	6500 - 11500 lm	120° breit	1500 mm	4x1,5 mm²



LUNA BL

DIFFUSER LUMINAIRE



HOUSING Polycarbonate, impact-resistant, IK08.
LAMP COVER Polycarbonate with integrated LED unit.
SEALS Non-ageing silicone seals.
ELECTRICAL COMPONENTS High-performance LED, LED converter.
ASSEMBLY Variable mounting distances thanks to the PRACHT CLAMPING SYSTEM. Suitable for ceiling, wall, pendant and rail mounting.
AREAS OF APPLICATION Parking garages, cellars, workshops, 1:1 LL replacement.
EL-CERTIFIED The LUNA BL is suitable for emergency lighting

- HIGH QUALITY
- QUICK ASSEMBLY
- 1:1 EXCHANGE
- ENEC
- DUST-TIGHT
- EL-CERTIFIED
- HOMOGENEOUS LIGHT

FROM EVERYDAY TO EXTREME - THE RIGHT SEGMENT FOR EVERY REQUIREMENT



Protection class I according to EN 60598
Protection type IP65
AC 220-240 V 50/60 Hz



LUNA BL

Single luminaire, color temperature 4000 K, Ra>80, IP65, -20°C ... +40°C

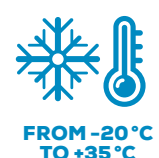
Power	Light distribution	Luminous flux	P/N	Length
1x20 W	120° wide	2500 lm	5211012	600 mm
1x20 W	120° wide	2800 lm	5211004B	1200 mm
1x39 W	120° wide	5400 lm	5211014B	1200 mm
1x27 W	120° wide	3800 lm	5211005B	1500 mm
1x47 W	120° wide	6500 lm	5211015B	1500 mm

ACCESSORIES

Through-wiring	P/N
3x1,5mm² Set LUNA BL 1,2m, consisting of rigid conductors, 2x5pin terminal block	5552132
3x1,5mm² Set LUNA BL 1,5m, consisting of rigid conductors, 2x5pin terminal block	5552135
5x2,5mm² Set LUNA BL 1,2m, consisting of rigid conductors, 2x5pin terminal block	5552152
5x2,5mm² Set LUNA BL 1,5m, consisting of rigid conductors, 2x5pin terminal block	5552155



IP65



KATLA BL

PROFILE LUMINAIRE



SEALS

Extremely short silicone seals

ALUMINIUM CARRIER

For optimal thermal management

IK08

Co-extruded polycarbonate housing

VARIABLE

PRACHT-CLIP-SYSTEM
for variable mounting

THROUGH-WIRING

3x1,5mm² ex factory

QUICK CONNECTION

Due to clippable end caps
and PRACHT SLIDER

HOUSING Co-extruded polycarbonate, impact resistant, IK08.

SEALS Extremely short, ageing resistant silicone seals.

ELECTRICAL COMPONENTS High power LED, LED converter.

THROUGH-WIRING Including 3x1,5 mm² wiring ex factory.

ASSEMBLY Variable mounting distances with PRACHT-CLIP-SYSTEM.

Suitable for ceiling and rail mounting.

FIELDS OF APPLICATION Parking garages, basements, workshops, 1:1
fluorescent light exchange.

- SLIM HOUSING
- STABLE
- 1:1 EXCHANGE
- ENEC
- SIMPLE MOUNTING
- HOMOGENEOUS LIGHT

KATLA BL

Individual luminaire, color temperature 4000 K, Ra>80, IP65, -20°C ... +40°C

Power	Light distribution	Luminous flux	P/N	Length
1x20 W	120° wide	2800 lm	5231004B	1240 mm
1x38 W	120° wide	5400 lm	5231014B	1240 mm
1x27 W	120° wide	3800 lm	5231005B	1540 mm
1x46 W	120° wide	6500 lm	5231015B	1540 mm

FROM EVERYDAY TO EXTREME - THE RIGHT SEGMENT FOR EVERY REQUIREMENT



TUBIS BL

TUBULAR LUMINAIRE



HOUSING Tube and end caps made of PMMA.

ELECTRICAL COMPONENTS High power LED, LED converter.

ASSEMBLY Variable mounting distances by PRACHT-CLAMP-SYSTEM. Suitable for ceiling, wall, pendant and rail mounting.

THROUGH-WIRING Including 3 x 1.5 mm² DV ex factory.

FIELDS OF APPLICATION Washing plants, wet rooms, workshops, unprotected outdoor areas, agriculture (unlimited), acid and alkaline cleaning, plants, oily environments and food industry.

- OIL-RESISTANT
- ACID-ALKALI RESISTANT
- UNPROTECTED OUTDOOR AREA
- AGRICULTURE
- ROBUST
- ENEC
- QUICK INSTALLATION
- -20° C ... +40° C

TUBIS BL Individual luminaire, color temperature 4000 K, Ra>80, IP67, -20°C ... +40°C

Power	Light distribution	Luminous flux	P/N	Length
1x20 W	120° breit	2800 lm	5240024	1330 mm
1x36 W	120° breit	5400 lm	5240034	1330 mm
1x24 W	120° breit	3800 lm	5240025	1629 mm
1x42 W	120° breit	6500 lm	5240035	1629 mm

SPECIALIST

FROM EVERYDAY TO EXTREME - THE RIGHT SEGMENT FOR EVERY REQUIREMENT



PRACHT®
INFINITY
RECYCLABLE

5
YEARS
WARRANTY

UP TO 100.000 H
LIFETIME

IP67
IP69K



FROM -20°C
TO +40°C

FOR
UNPROTECTED
OUTDOOR AREAS

PRO LINE LIGHT FOR THE EXTREME

Individual lighting solutions for special requirements and areas of application - that's what the PRACHT PRO LINE stands for.

Whether resistance to heat, cold, aggressive gases and liquids or ensuring safety, smart lighting control via Casambi and networked/controlled IOT solutions: The PRO LINE starts where others stop.

With a warranty of 5 years and more, these luminaires stand for the highest quality MADE IN GERMANY and reflect the PRACHT expertise of many decades in the development of reliable and innovative lighting solutions. In the PRO LINE,

PRACHT is the first and only manufacturer in the world to offer industrial lighting solutions made from up to 99% recycled material (REMADE). We would be happy to present many other sustainability initiatives along the product life cycle such as the exchangeability of components (REUSE) or refurbishing options (REBUILD) to you personally.



APOLLO G2

- Swivelling reflectors
- From -40°C to +65°C ambient temperature
- Up to 7x2.5mm² through-wiring
- Customizable cable entries, light colors or control options
- Food industry (IFS certificate) & DB listed
- High efficiency: up to 218 lm/W

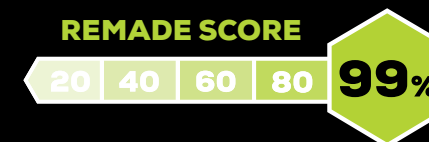
TUBIS

- Ideal for agriculture and industry
- Food industry (IFS certificate) & DB listed
- Various light colors possible
- High ambient temperatures

GECKO L

- Ex-proof - Certified according to ATEX & IECEx
- For zones 1-21 & 2-22
- Moderate surface temperature due to efficient LED technology
- Various mounting accessories allow ceiling, pendant, pipe and swivel wall mounting possible

ONE CONNECT LIGHT SYSTEMS



STANDARD BECOME SYSTEMS

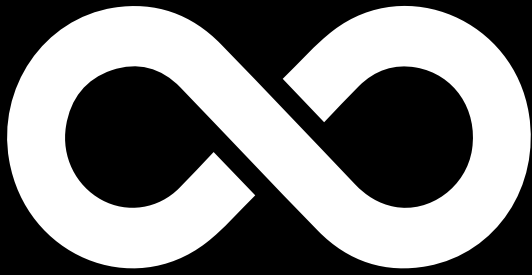
What perspective is important to you?
How do you need light in the room?
Create your lighting system with the individual luminaires by ONE CONNECT. Diversity of form takes on a new meaning.

SUPPORT RAILS FROM PRACHT

- Different rails for different requirements
- Current- and control-carrying rail
- Up to 12-pole through-wiring
- Very high stability
- Suitable solutions also for the food industry



PRACHT®



INFINITY
ANY
LUMINAIRE
CAN TURN
INTO A
PRACHT
LUMINAIRE

WITH OUR CIRCULAR FEED-BACK SYSTEM, WE'RE ENABLING THAT EVERY LUMINAIRE CAN TURN INTO A PRACHT LUMINAIRE.

HOW ARE WE DOING THIS?

WE'RE TAKING USED LIGHTS, RECYCLE AS MANY PLASTICS AS POSSIBLE AND USE THEM TO CREATE NEW PRACHT LUMINAIRES. OUR LUMINAIRES HAVE A RECYCLED CONTENT UP TO 99%.

WITH THIS FORMULA, WE ARE PRODUCING INDUSTRIAL LUMINAIRES WHICH REPRESENT 100% QUALITY. OUR INFINITY RANGE EMBODIES EVERYTHING THAT PRACHT STANDS FOR: SUSTAINABILITY, EFFICIENCY, INNOVATION AND THE HIGHEST QUALITY.

Alfred PRACHT Lichttechnik GmbH | PRACHT Lighting Solutions GmbH
Am Seerain 3 | D-35232 Dautphetal-Buchenau/Lahn | Germany