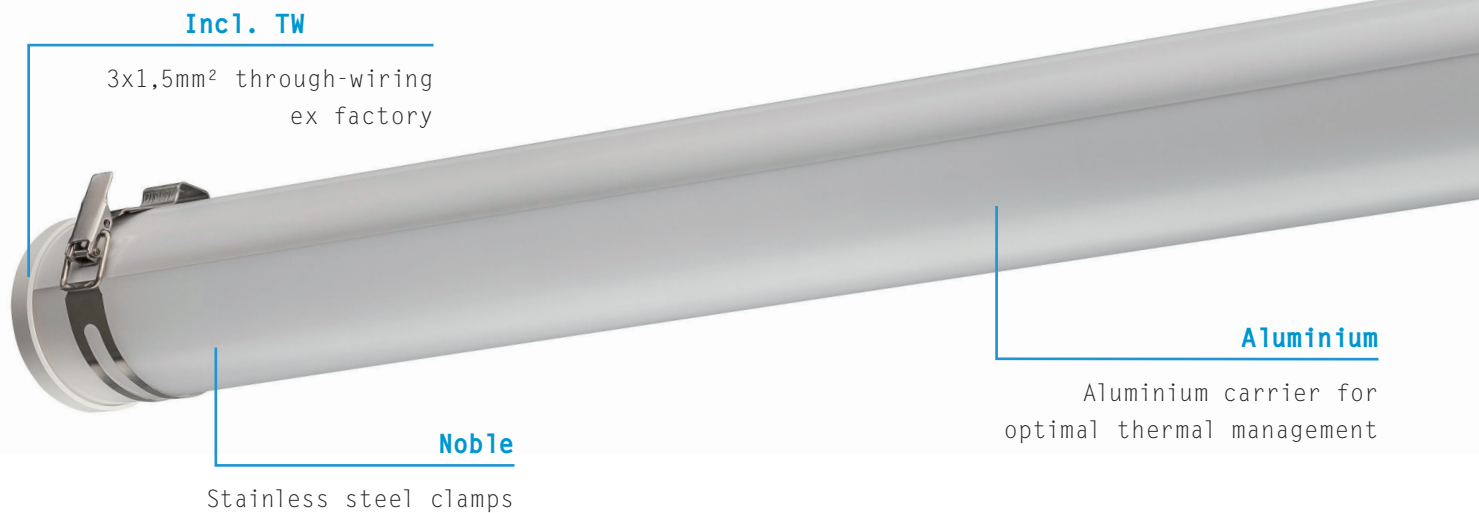


# TUBIS BL



**HOUSING** Tube and end caps made of PMMA.

**ELECTRICAL COMPONENTS** High power LED, LED converter.

**ASSEMBLY** Variable mounting distances by PRACHT-CLAMP-SYSTEM. Suitable for ceiling, wall, pendant and rail mounting.

**FIELDS OF APPLICATION** Washing plants, wet rooms, workshops, unprotected outdoor areas, agriculture (unlimited), acid and alkaline cleaning, plants and oily environments.

**CONFIGURABILITY** Possible in the TUBIS PRO LINE. E.g.: additional resistances, light colors, control module, emergency lighting modules and a lot more.

**Individual luminaire, color temperature 4000 K, Ra>80, diameter 70mm**

Power	Light distribution	Luminous flux	P/N	Length	Weight
1x20 W	120° wide	2800 lm	5240024	1330 mm	1,8 kg
1x36 W	120° wide	5400 lm	5240034	1330 mm	1,8 kg
1x24 W	120° wide	3800 lm	5240025	1629 mm	2,2 kg
1x42 W	120° wide	6500 lm	5240035	1629 mm	2,2 kg

**Protection class I according to EN 60598**

**Protection type IP67/IP69K**

AC/DC 220-240 V 50/60 Hz \*registered

### Fast

Solid end caps, extremely fast connection

### Resistant

High-quality PMMA round tube (IK06, Ø70mm)



# SPECIALIST

**ACID-ALKALI-RESISTANT  
OIL-RESISTANT AGRICULTURE  
STURDY FAST ASSEMBLY ENEC  
FOR UNPROTECTED OUTDOOR AREAS  
TUBULAR LUMINAIRE -20° C ... +40° C**

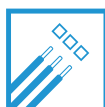
**5**

**YEAR  
WARRANTY**



**UP TO 100.000h  
LIFETIME**

**IP67  
IP69K**



**INCL. TW  
(3X1,5MM²)**



**UNRESTRICTED  
LIVESTOCK  
FARMING**



**FROM -20  
TO +40° C**



**UNPROTECTED  
OUTDOOR AREA**